

Select figures listed on the Table of Contents only appear within the full-length articles online.

In Focus

- 323 Spotlight on the August 20 issue
- 324 This Week's *Neurology*® Podcast

Editorials

- 325 **Dalfampridine improves slowed processing speed in MS: Picking up the pace**
J.F. Sumowski and N. Muhlert
- 327 **PDE10A antibodies in autoimmune encephalitis: A possible marker of cancer immunotherapy?**
M.J. Titulaer, S.R. Irani, and H. Lassmann

Articles: Short Format

Full articles at Neurology.org/N

- 329 **Effect of dalfampridine on information processing speed impairment in multiple sclerosis**
L. De Giglio, F. De Luca, F. Gurreri, I. Ferrante, L. Prosperini, G. Borriello, E. Quartuccio, C. Gasperini, and C. Pozzilli
CME Course Editorial, p. 325 Class of Evidence
- 330 **Hospital distance, socioeconomic status, and timely treatment of ischemic stroke**
J. Ader, J. Wu, G.C. Fonarow, E.E. Smith, S. Shah, Y. Xian, D.L. Bhatt, L.H. Schwamm, M.J. Reeves, R.A. Matsouaka, and K.N. Sheth
- 331 **Frontal lobe ¹H MR spectroscopy in asymptomatic and symptomatic *MAPT* mutation carriers**
Q. Chen, B.F. Boeve, N. Tosakulwong, T. Lesnick, D. Brushaber, C. Dheel, J. Fields, L. Forsberg, R. Gavriloa, D. Gearhart, D. Haley, J.L. Gunter, J. Graff-Radford, D. Jones, D. Knopman, N. Graff-Radford, R. Kraft, M. Lapid, R. Rademakers, J. Syrjanen, Z.K. Wszolek, H. Rosen, A.L. Boxer, and K. Kantarci
- 332 **Mild behavioral impairment is linked to worse cognition and brain atrophy in Parkinson disease**
E. Yoon, Z. Ismail, A. Hanganu, M. Kibreab, T. Hammer, J. Cheetham, I. Kathol, J.R. Sarna, D. Martino, S. Furtado, and O. Monchi
- 333 **Cognitive heterogeneity in probable Alzheimer disease: Clinical and neuropathologic features**
Y. Qiu, D.M. Jacobs, K. Messer, D.P. Salmon, and H.H. Feldman
- 334 **Measures of obesity are associated with MRI markers of brain aging: The Northern Manhattan Study**
M.R. Caunca, H. Gardener, M. Simonetto, Y.K. Cheung, N. Alperin, M. Yoshita, C. DeCarli, M.S.V. Elkind, R.L. Sacco, C.B. Wright, and T. Rundek
CME Course
- 335 **Hippocampal morphometry in sudden and unexpected death in epilepsy**
A. Somani, A.-B. Zborovschi, Y. Liu, S. Patodia, Z. Michalak, S.M. Sisodiya, and M. Thom
- 336 **Phosphodiesterase 10A IgG: A novel biomarker of paraneoplastic neurologic autoimmunity**
A. Zekeridou, T. Kryzer, Y. Guo, A. Hassan, V. Lennon, C.F. Lucchinetti, S. Pittock, and A. McKeon
Editorial, p. 327 Open Access Article Podcast Video

Ahead of Print Articles and Editorials

NPub.org/aheadofprint

Continued

What's Happening

- 337 **What's happening in *Neurology*[®] *Clinical Practice***
- 338 **What's happening in *Neurology*[®] *Neuroimmunology & Neuroinflammation***

Clinical Implications of Neuroscience Research

- 339 **Segmental spinal sympathetic machinery: Implications for autonomic dysreflexia**
K. Shouman and E.E. Benarroch

Views & Reviews

- 346 **Clinician-rated measures for distal symmetrical axonal polyneuropathy: ACTION systematic review**
J.S. Gewandter, C.H. Gibbons, M. Campagnolo, J. Lee, J. Chaudari, N. Ward, L. Burke, G. Cavaletti, D.N. Herrmann, J.C. McArthur, J.W. Russell, A.G. Smith, S.M. Smith, D.C. Turk, R.H. Dworkin, and R. Freeman

Video NeuroImages

- 361 **Monocular nystagmus in a patient with alternating hemiplegia of childhood**
J. Tello, I. Ruiz, L. Herrera, A. Miranda, P. Alid, and M. Troncoso
Video

Resident & Fellow Section

- 362 **Education Research: Understanding barriers to goals of care communication for neurology trainees**
T. Goyal, B.N. Hasty, S. Berekyei Merrell, and C.A. Gold
- e823 **Clinical Reasoning: Pes cavus and neuropathy: Think beyond Charcot-Marie-Tooth disease**
J. Alderson and P.S. Ghosh
- e827 **Teaching NeuroImages: Enlarged parietal foramina inadvertently labeled as burr holes**
J. Fernandez, S. Woodson, and K. Cannard
- e829 **Teaching NeuroImages: Optic and third cranial nerves infiltration as initial relapse of acute lymphoblastic leukemia**
N. Shor, C. Fardeau, and S. Bonnin

Disputes & Debates: Editors' Choice

- 367 **Editors' note: Teaching Video NeuroImages: Vestibulo-ocular reflex defect in cerebellar stroke**
A. Lewis and S. Galetta

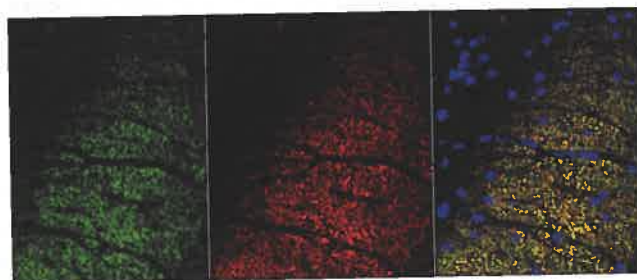
- 367 **Reader response: Teaching Video NeuroImages: Vestibulo-ocular reflex defect in cerebellar stroke**
A.A. Tarnutzer, D. Gold, A.M. Blitz, J.C. Kattah, and D.E. Newman-Toker
- 368 **Reader response: Teaching Video NeuroImages: Vestibulo-ocular reflex defect in cerebellar stroke**
L. Chen and G.M. Halmagyi
- 368 **Reader response: Teaching Video NeuroImages: Vestibulo-ocular reflex defect in cerebellar stroke**
T.-K. Lee, E.-S. Lee, and S. Na
- 369 **Author response: Teaching Video NeuroImages: Vestibulo-ocular reflex defect in cerebellar stroke**
J. Witsch, M. Ferrer, and D. Navaratnam

Corrections

- 371 **The genetic basis of undiagnosed muscular dystrophies and myopathies: Results from 504 patients**
- 371 **Congenital autophagic vacuolar myopathy is allelic to X-linked myopathy with excessive autophagy**
- 371 **Congenital muscular dystrophies with defective glycosylation of dystroglycan: A population study**
- 371 **INTREPAD: A randomized trial of naproxen to slow progress of presymptomatic Alzheimer disease**

Department

In the Next Issue of *Neurology*[®]

**Cover image**

Rabbit PDE10A IgG (green), colocalizes with patient serum IgG (red) by confocal indirect immunofluorescence imaging on murine basal ganglia (merged images; yellow). Nuclei are blue (DAPI stained). See page 336