

Neurology[®]

Table of Contents

Volume 87, Number 4, July 26, 2016

Neurology.org

THE MOST WIDELY READ AND HIGHLY CITED PEER-REVIEWED
NEUROLOGY JOURNAL



IN FOCUS

- 343 Spotlight on the July 26 Issue
425 This Week's *Neurology*[®] Podcast

EDITORIALS

- 344 Acute interatrial block is a distinct risk factor for ischemic stroke
T.M. Hughes and B.B. Worrall
- 346 US health insurance is an obstacle to disease-modifying treatments in MS
D. Bourdette and F. Patti
- 348 Stem cells in amyotrophic lateral sclerosis: Ready for prime time?
S.H. Appel and C. Armon
- 350 Treating myasthenia on consensus guide: Helpful and challenging but still unfinished business
M.C. Dalakas

ARTICLES

- 352 Advanced interatrial block and ischemic stroke: The Atherosclerosis Risk in Communities Study
W.T. O'Neal, H. Kamel, Z.-M. Zhang, L.Y. Chen, A. Alonso, and E.Z. Soliman
Editorial, p. 344
- 357 Ultraearly hematoma growth in active intracerebral hemorrhage
D. Rodriguez-Luna, P. Coscojuela, M. Rubiera, M.D. Hill, D. Dowlatshahi, R.I. Aviv, Y. Silva, I. Dzialowski, C. Lum, A. Czlonkowska, J.-M. Boulanger, C.S. Kase, G. Gubitz, R. Bhatia, V. Padma, J. Roy, A. Tomasello, A.M. Demchuk, and C.A. Molina, for the PREDICT/Sunnybrook ICH CTA Study Group
- 363 Comment: The elusive search for markers of hematoma expansion
G.J. Rodriguez, A. Maud, P. Piriyaawat, and S. Cruz-Flores
- 365 Health insurance affects the use of disease-modifying therapy in multiple sclerosis
G. Wang, R.A. Marrie, A.R. Salter, R. Fox, S.S. Cofield, T. Tyry, and G.R. Cutter
Editorial, p. 348

- 375 Tau PET in Alzheimer disease and mild cognitive impairment
H. Cho, J.Y. Choi, M.S. Hwang, J.H. Lee, Y.J. Kim, H.M. Lee, C.H. Lyoo, Y.H. Ryu, and M.S. Lee
- 384 Presymptomatic cognitive decline in familial frontotemporal dementia: A longitudinal study
L.C. Jiskoot, E.G.P. Dopfer, T. Heijer, R. Timman, R. van Minkelen, J.C. van Swieten, and J.M. Papma
- 392 Transplantation of spinal cord-derived neural stem cells for ALS: Analysis of phase 1 and 2 trials
J.D. Glass, V.S. Hertzberg, N.M. Boulis, J. Riley, T. Federici, M. Polak, J. Bordeau, C. Fournier, K. Johe, T. Hazel, M. Cudkowicz, N. Atassi, L.F. Borges, S.B. Rutkove, J. Duell, P.G. Patil, S.A. Goutman, and E.L. Feldman
 Editorial, p. 348
- 401 DMD genotypes and loss of ambulation in the CINRG Duchenne Natural History Study
L. Bello, L.P. Morgenroth, H. Gordish-Dressman, E.P. Hoffman, C.M. McDonald, and S. Cirak, on behalf of the CINRG investigators
- 410 A new saccadic indicator of peripheral vestibular function based on the video head impulse test
H.G. MacDougall, L.A. McGarvie, G.M. Halmagyi, S.J. Rogers, L. Manzari, A.M. Burgess, I.S. Curthoys, and K.P. Weber
- 417 Comment: A quick and reliable test of peripheral vestibular function—On an impulse
T.D. Fife

VIEWS & REVIEWS

- 419 International consensus guidance for management of myasthenia gravis: Executive summary
D.B. Sanders, G.I. Wolfe, M. Benatar, A. Evoli, N.E. Gilhus, I. Illa, N. Kuntz, J.M. Massey, A. Melms, H. Murai, M. Nicolle, J. Palace, D.P. Richman, J. Verschuuren, and P. Narayanaswami
 Editorial, p. 350
- 426 Detecting depression in Parkinson disease: A systematic review and meta-analysis
Z. Goodarzi, K.J. Mrklas, D.J. Roberts, N. Jette, T. Pringsheim, and J. Holroyd-Leduc

CONTINUED

Neurology®

Table of Contents

continued



CLINICAL/SCIENTIFIC NOTES

- 438 Evaluation of pain and stress in healthy volunteers undergoing research lumbar punctures
G. Page-Wilson, S.L. Wardlaw, K.T. Nguyen, and R.M. Smiley
- 440 PML during dimethyl fumarate treatment of multiple sclerosis: How does lymphopenia matter?
K. Lehmann-Horn, H. Penkert, P. Grein, U. Leppmeier, S. Teuber-Hanselmann, B. Hemmer, and A. Berthele

REFLECTIONS: NEUROLOGY AND THE HUMANITIES

- e33 Alzheimer's disease: True enemy of humankind
D.F. Weaver

NEUROIMAGES

- 442 Marked enlargement of neck circumference from nerve hypertrophy in CIDP
P.R. Bourque, T.B. Nguyen, J. Zwicker, and J. Warman Chardon
- 443 Serial arterial spin labeling MRI in autonomic status epilepticus due to anti-LGI1 encephalitis
C. Espinosa-Jovel, R. Toledano, I. García-Morales, J. Álvarez-Linera, and A. Gil-Nagel

RESIDENT & FELLOW SECTION

- e34 Mystery Case: Brown-Séquard syndrome caused by idiopathic spinal cord herniation
E.T. Fonoff, W.O. Contreras Lopez, and M.J. Teixeira

- e36 Pearls & Oysters: Vascular EDS presenting with acute proptosis: Always revisit the history
A.P.R. Samaraweera, E. Laverse, and A. Henderson
- e39 Teaching NeuroImages: Coats disease revealing facioscapulohumeral muscular dystrophy
P.V. Sgobbi de Souza, W.B. Vieira de Rezende Pinto, G.N. de Rezende Batistella, R.B. Dias, and A.S. Bulle Oliveira
- e40 Teaching NeuroImages: Intracranial hypotension in a patient with Marfan syndrome
A. Abu Libdeh, J.A. Matsumoto, and R. Dhamija

PATIENT PAGE

- e42 Using stem cells to treat ALS
S. Karceski and J. Duran

WRITECLICK® EDITOR'S CHOICE

- 445 Safety and immunologic effects of high- vs low-dose cholecalciferol in multiple sclerosis
J. Avasarala; Author Response: E.S. Sotirchos, P. Bhargava, P.A. Calabresi
- 446 Safety and immunologic effects of high- vs low-dose cholecalciferol in multiple sclerosis
D. Golan, A. Miller; Author Response: E.S. Sotirchos, P. Bhargava, P.A. Calabresi

CORRECTION

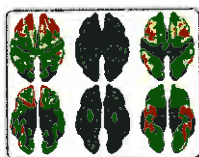
- 447 Assessing bioequivalence of generic modified-release antiepileptic drugs

DEPARTMENT

In the Next Issue of *Neurology*®

Podcast at Neurology.org CME Video Patient Page LOE classification LOE recommendation

Find us on Facebook: [Neurologyfan](https://www.facebook.com/Neurologyfan) twitter.com/Neurologyfan twitter.com/GreenJournal



Cover image: Sample results of increased amyloid (first column) and tau (second and third columns) pathology in patients with Alzheimer disease (first and third columns) and mild cognitive impairment (second column). See page 375.

Look for Publish Ahead of Print articles and editorials under the Ahead of Print tab at Neurology.org