

Select figures listed on the Table of Contents only appear within the full-length articles online.

In Focus

- 1033 **Spotlight on the December 4 issue**
- 1034 **This Week's *Neurology*® Podcast**

Editorials

- 1035 **Concussion serum biomarkers: A quest for the Holy Grail?**
E.D. Bigler and E. Deibert
- 1038 **Stroke recovery: Does one size fit all?**
E.B. Marsh and R.H. Llinas

Articles: Short Format

Full articles at Neurology.org/N

- 1040 **Concussion Biomarkers Assessed in Collegiate Student-Athletes (BASICS) I: Normative study**
B.M. Asken, R.M. Bauer, S.T. DeKosky, Z.M. Houck, C.C. Moreno, M.S. Jaffee, A.G. Weber, and J.R. Clugston
👉 Editorial, p. 1035
- 1041 **Concussion BASICS II: Baseline serum biomarkers, head impact exposure, and clinical measures**
B.M. Asken, R.M. Bauer, S.T. DeKosky, Z.M. Houck, C.C. Moreno, M.S. Jaffee, D.N. Dubose, J.K. Boone, A.G. Weber, and J.R. Clugston
👉 Editorial, p. 1035
- 1042 **Concussion BASICS III: Serum biomarker changes following sport-related concussion**
B.M. Asken, R.M. Bauer, S.T. DeKosky, A.M. Svingos, G. Hromas, J.K. Boone, D.N. DuBose, R.L. Hayes, and J.R. Clugston
👉 Class of Evidence 👉 Editorial, p. 1035
- 1043 **Nomograms to predict naming decline after temporal lobe surgery in adults with epilepsy**
R.M. Busch, O. Hogue, M.W. Kattan, M. Hamberger, D.L. Drane, B. Hermann, M. Kim, L. Ferguson, W. Bingaman, J. Gonzalez-Martinez, I.M. Najm, and L. Jehi
👉 CME Course
- 1044 **Neurologic outcome of postanoxic refractory status epilepticus after aggressive treatment**
S. Beretta, A. Coppo, E. Bianchi, C. Zanchi, D. Carone, A. Stabile, G. Padovano, E. Sulmina, A. Grassi, G. Bogliun, G. Foti, C. Ferrarese, A. Pesenti, E. Beghi, and L. Avalli
- 1045 **Effect of IV glyburide on adjudicated edema endpoints in the GAMES-RP Trial**
W.T. Kimberly, M.B. Bevers, R. von Kummer, A.M. Demchuk, J.M. Romero, J.J. Elm, H.E. Hinson, B.J. Molyneaux, J.M. Simard, and K.N. Sheth
👉 Class of Evidence
- 1046 **PCNT point mutations and familial intracranial aneurysms**
O. Lorenzo-Betancor, P.R. Blackburn, E. Edwards, R. Vázquez-do-Campo, E.W. Klee, C. Labbé, K. Hodges, P. Glover, A.N. Sigafos, A.I. Soto, R.L. Walton, S. Doxsey, M.B. Bober, S. Jennings, K.J. Clark, Y. Asmann, D. Miller, W.D. Freeman, J. Meschia, and O.A. Ross
- 1047 **Patient-reported outcomes across cerebrovascular event types: More similar than different**
I.L. Katzan, A. Schuster, C. Newey, K. Uchino, and B. Lapin
👉 CME Course 👉 Editorial, p. 1038 🎧 Podcast

👉 Ahead of Print Articles and Editorials

Npub.org/aheadofprint

Continued

What's Happening

- 1048 **What's happening in *Neurology****
- 1049 **What's happening in *Neurology** *Genetics***
- 1050 **What's happening in *Without Borders***

Views & Reviews

- 1051 **Ultrastructural mechanisms of macrophage-induced demyelination in CIDP**
H. Koike, R. Nishi, S. Ikeda, Y. Kawagashira, M. Iijima, M. Katsuno, and G. Sobue

Clinical/Scientific Notes

- 1061 **Cortical myoclonic tremor induced by fixation-off sensitivity: An unusual cause of insomnia**
L. Licchetta, F. Bisulli, L. Ferri, G. Cantalupo, L. Alvisi, L. Vignatelli, G. Loddo, F. Provini, and P. Tinuper
📺 Video

Reflections: Neurology and the Humanities

- 1064 **Dosing**
B.S. Giesser

Resident & Fellow Section

- 1065 **Residency Training: Progressive gait difficulty and incontinence in a 40-year-old man with HIV**
A. Silverman, T. O'Meara, L. Le, K. Robertson, and S. Spudich
- e2192 **Clinical Reasoning: A case of bilateral orbital mass lesions presenting with acute monocular vision loss**
N. Bhatt, A. Landman, C. Sidani, and N. Asdaghi
- e2197 **Pearls & Oysters: Neuro-Sweet disease presenting as ischemic stroke and aseptic meningitis**
A.S. Das, S.E. Conway, S.H. Unizory, M.A. Bouffard, N.S. Rost, and N. Venna
- e2200 **Teaching NeuroImages: Radiologic features of septo-optic dysplasia plus syndrome**
M. Ganau, G. Talenti, and F. D'Arco

Disputes & Debates: Editors' Choice

- 1071 **Editors' note: Increased resting cerebral blood flow in adult Fabry disease: MRI arterial spin labeling study**
A. Lewis and S. Galetta
- 1071 **Reader response: Increased resting cerebral blood flow in adult Fabry disease: MRI arterial spin labeling study**
S. Coccozza and M. Quarantelli

- 1072 **Author response: Increased resting cerebral blood flow in adult Fabry disease: MRI arterial spin labeling study**

D.J. Werring, A. Merwick, I. Davagnanam, P. Phyu, F. Bolsover, F. Jichi, C. Wheeler-Kingshott, X. Golay, D. Hughes, L. Cipolotti, E. Murphy, and R.H. Lachmann

- 1073 **Editors' note: Body composition status and the risk of migraine: A meta-analysis**

A. Lewis and S. Galetta

- 1073 **Reader response: Body composition status and the risk of migraine: A meta-analysis**

V.K. Gupta

- 1074 **Author response: Body composition status and the risk of migraine: A meta-analysis**

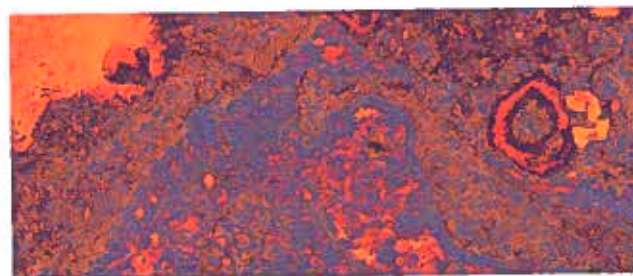
B. Gelaye, S. Sacco, W. Brown, H. Nitchie, R. Ornello, and B.L. Peterlin

Correction

- 1074 **Data-driven analyses revealed the comorbidity landscape of tuberous sclerosis complex**

AAN Annual Meeting Abstracts

- S1 **2018 Sports Concussion Conference Abstracts Supplement**

Department**In the Next Issue of *Neurology******📺 Cover image**

A high-powered view of a macrophage invading the basement membrane surrounding the myelinated fiber on longitudinal sections of sural nerve biopsy specimens in chronic inflammatory demyelinating polyneuropathy (CIPD). Colorized by Cindy Abair, *Neurology* Senior Graphics Editor.

See page 1051