



Select figures listed on the Table of Contents only appear within the full-length articles online.

## In Focus

- 757 **Spotlight on the April 24 issue**
- 758 **This Week's *Neurology*® Podcast**

## Editorials

- 759 **Amyloid "accumulators": The next generation of candidates for amyloid-targeted clinical trials?**  
C.T. McMillan and G. Chételat
- 761 **Complexity of MS management in the current treatment era**  
T. Chitnis, G. Giovannoni, and M. Trojano

## ➤ Ahead of Print Articles and Editorials

NPub.org/aheadofprint

## Articles: Short Format

Full articles at Neurology.org/N

- 763 **Memory decline accompanies subthreshold amyloid accumulation**  
S.M. Landau, A. Horng, and W.J. Jagust, For the Alzheimer's Disease Neuroimaging Initiative  
➤ Editorial, p. 759
- 764 **White matter abnormalities and cognition in patients with conflicting diagnoses and CSF profiles**  
E.R. Lindemer, D.N. Greve, B. Fischl, D.H. Salat, and T. Gomez-Isla
- 765 **Insulin resistance and clinical outcomes after acute ischemic stroke**  
T. Ago, R. Matsuo, J. Hata, Y. Wakisaka, J. Kuroda, T. Kitazono, and M. Kamouchi, On behalf of the Fukuoka Stroke Registry Investigators
- 766 **Neurocognition, sleep, and PET findings in type 2 vs type 1 narcolepsy**  
Y.-S. Huang, I.-T. Hsiao, F.-Y. Liu, F.-M. Hwang, K.-L. Lin, W.-C. Huang, and C. Guilleminault  
➤ Patient Page
- 767 **IV steroids during long episodes of Kleine-Levin syndrome**  
A. Léotard, E. Groos, C. Chaumereull, L. Peter-Derex, A.O. Rossetti, S. Leu-Semenescu, and I. Arnulf  
➤ Class of Evidence
- 768 **Cerebellar volume as an imaging marker of development in infants with tuberous sclerosis complex**  
S. Srivastava, A.K. Prohl, B. Scherrer, K. Kapur, D.A. Krueger, S.K. Warfield, and M. Sahin, on behalf of the TACERN Study Group
- 769 **Biomarker-based analysis of preclinical progression in spinal and bulbar muscular atrophy**  
Y. Hijioka, A. Hashizume, S. Yamada, T. Inagaki, D. Ito, A. Hirakawa, K. Suzuki, N. Atsuta, T. Tsuboi, M. Hattori, A. Hori, H. Banno, G. Sobue, and M. Katsuno
- 770 **Dorsal and ventral horn atrophy is associated with clinical outcome after spinal cord injury**  
E. Huber, G. Davld, A.J. Thompson, N. Welskopf, S. Mohammadi, and P. Freund  
➤ CME Course Open Access Article
- 771 **Aminophylline for treatment of postdural puncture headache: A randomized clinical trial**  
C. Wu, D. Guan, M. Ren, Z. Ma, C. Wan, Y. Cui, P. Zhong, W. Zhao, C. Li, F. Yan, J. Xie, F. Xue, Y. Lian, H. Liu, C. Wang, X. Ji, and N. Xie  
➤ CME Course ➤ Class of Evidence
- 772 **Beta oscillations and urinary voiding in Parkinson disease**  
H.A. Roy, T.Z. Aziz, J.J. Fitzgerald, and A.L. Green

Continued

**What's Happening**

- 773 **What's happening in *Neurology*\***
- 774 **What's happening in *Neurology*\* *Clinical Practice***
- 775 **What's happening in *Neurology*\* *Genetics***
- 776 **What's happening in *Neurology*\* *Neuroimmunology & Neuroinflammation***

**Special Articles**

- 777 **Practice guideline recommendations summary: Disease-modifying therapies for adults with multiple sclerosis: Report of the Guideline Development, Dissemination, and Implementation Subcommittee of the American Academy of Neurology**  
A. Rae-Grant, G.S. Day, R.A. Marrie, A. Rabinstein, B.A.C. Cree, G.S. Gronseth, M. Haboubi, J. Halper, J.P. Hoesy, D.E. Jones, R. Lisak, D. Pelletier, S. Potrebic, C. Sitcov, R. Sommers, J. Stachowiak, T.S.D. Getchius, S.A. Merillat, and T. Pringsheim  
📄 Editorial, p. 761 🎧 Podcast 📺 Level of Recommendation
- 789 **Comprehensive systematic review summary: Disease-modifying therapies for adults with multiple sclerosis: Report of the Guideline Development, Dissemination, and Implementation Subcommittee of the American Academy of Neurology**  
A. Rae-Grant, G.S. Day, R.A. Marrie, A. Rabinstein, B.A.C. Cree, G.S. Gronseth, M. Haboubi, J. Halper, J.P. Hoesy, D.E. Jones, R. Lisak, D. Pelletier, S. Potrebic, C. Sitcov, R. Sommers, J. Stachowiak, T.S.D. Getchius, S.A. Merillat, and T. Pringsheim  
📄 Editorial, p. 761

**Clinical/Scientific Notes**

- 801 **Palatal tremor as a presenting symptom of amyotrophic lateral sclerosis**  
A.-H. Maghzi, S. Sahai, S. Zlmonowodzki, and R.H. Baloh  
📺 Video

**Reflections: Neurology and the Humanities**

- 803 **Glioblastoma in 140 characters**  
N.A. Mohile  
🎧 Audio

**Resident & Fellow Section**

- 805 **Resident & Fellow Rounds**  
J.J. Millichap and R.E. Strowd III
- 808 **Pearls & Oysters: The critical role of histopathology in diagnosing cancer-associated necrotizing CNS vasculitis**  
J. Sheehan, J. Tate, R. Mott, C. Geer, R. Wolfe, R.E. Strowd, and A. Guzik
- e1535 **Clinical Reasoning: A 30-year-old man with headache and sleep disturbance**  
S.W. English, B.M. Keegan, E.P. Flanagan, W.O. Tobin, and N.L. Zalewski

- e1541 **Teaching NeuroImages: Multimodality imaging of carotid web**  
D. Renard, J. Hampton, M. Kelta, and C. Freltag

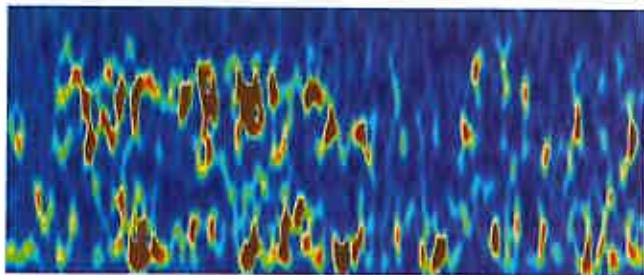
- e1542 **Teaching Video NeuroImages: Pulsatile proptosis and wall-eyed bilateral internuclear ophthalmoplegia**  
E. Papageorgiou, E.E. Tsironi, S. Androudi, and P. Koltsidopoulos  
📺 Video

**Patient Page**

- e1544 **Narcolepsy, brain imaging, and cognition: Understanding the connections**  
S. Karceski

**Disputes & Debates: Editors' Choice**

- 812 **Editors' note: Utilization of rehabilitation therapy services in Parkinson disease in the United States**  
C. Karam and S. Galetta
- 812 **Reader response: Utilization of rehabilitation therapy services in Parkinson disease in the United States**  
M.S. Bryant and E.J. Protas
- 813 **Author response: Utilization of rehabilitation therapy services in Parkinson disease in the United States**  
M.E. Fullard and A.W. Willis
- 813 **Editors' note: High frequency of gastrointestinal manifestations in myotonic dystrophy type 1 and type 2**  
C. Karam and S. Galetta
- 814 **Reader response: High frequency of gastrointestinal manifestations in myotonic dystrophy type 1 and type 2**  
G. Silvestri, D. Maccora, A. Perna, S. Rossi, and V. Valenza
- 814 **Author response: High frequency of gastrointestinal manifestations in myotonic dystrophy type 1 and type 2**  
J.E. Hillbert, C.A. Thornton, and R.T. Moxley III

**Department****In the Next Issue of *Neurology*\***

- 📺 **Cover image**  
Correlation between ICIQ frequency score and normalized beta power in the GPi during voiding in Parkinson disease.  
See page 772