

Select figures listed on the Table of Contents only appear within the full-length articles online.

## In Focus

- 715 **Spotlight on the April 17 issue**
- 716 **This Week's Neurology® Podcast**

## Editorials

- 717 **Patient-reported outcomes after ischemic stroke as part of routine care**  
M.G. George and X. Zhao
- 719 **Risk of recurrent cervical artery dissection**  
J.W. Cole and M.C. Johansen
- 721 **In search of a putative imaging biomarker for Fabry disease: Go with the flow?**  
A.-K. Glese and N.S. Rost

## Articles: Short Format

Full articles at [Neurology.org/N](http://Neurology.org/N)

- 723 **The most affected health domains after ischemic stroke**  
I.L. Katzan, N.R. Thompson, K. Uchino, and B. Lapin  
📌 Editorial, p. 717
- 724 **Recurrence of cervical artery dissection: An underestimated risk**  
M. Kloss, C. Grond-Ginsbach, P. Ringleb, I. Hausser, W. Hacke, and T. Brandt  
📌 Editorial, p. 719
- 725 **Increased resting cerebral blood flow in adult Fabry disease: MRI arterial spin labeling study**  
P. Phyu, A. Merwick, I. Davagnanam, F. Bolsover, F. Jichi, C. Wheeler-Kingshott, X. Golay, D. Hughes, L. Cipolotti, E. Murphy, R.H. Lachmann, and D.J. Werring  
📌 Editorial, p. 721
- 726 **Clinical and pathogenic significance of IgG, IgA, and IgM antibodies against the NMDA receptor**  
M. Hara, E. Martinez-Hernandez, H. Arifo, T. Armangué, M. Spatola, M. Petit-Pedrol, A. Salz, M.R. Rosenfeld, F. Graus, and J. Dalmau  
📌 CME Course
- 727 **Megalencephalic leukoencephalopathy with subcortical cysts: Characterization of disease variants**  
E.M.C. Hamilton, P. Tekturk, F. Cialdella, D.F. van Rappard, N.I. Wolf, C. Yalcinkaya, U. Çetinçelk, A. Rajaei, A. Kariminejad, J. Paprocka, Z. Yapici, V.M. Bošnjak, and M.S. van der Knaap, On behalf of the MLC Research Group  
📌 CME Course [Open Access Article](#)
- 728 **Brain structure and cognition 3 years after the end of an early menopausal hormone therapy trial**  
K. Kantarci, N. Tosakulwong, T.G. Lesnick, S.M. Zuk, V.J. Lowe, J.A. Fields, J.L. Gunter, M.L. Senjem, M.L. Settell, C.E. Gleason, L.T. Shuster, K.R. Bailey, N.M. Dowling, S. Asthana, C.R. Jack, Jr., W.A. Rocca, and V.M. Miller  
[Open Access Article](#) 📌 Class of Evidence
- 729 **Body mass index, sitting time, and risk of Parkinson disease**  
E. Roos, A. Grotta, F. Yang, R. Bellocco, W. Ye, H.-O. Adami, K. Wirdefeldt, and Y.T. Lagerros  
[Open Access Article](#)

## 📌 Ahead of Print Articles and Editorials

[Npub.org/aheadofprint](http://Npub.org/aheadofprint)




Continued

730 **Increased cerebral functional connectivity in ALS: A resting-state magnetoencephalography study**

M. Proudfoot, G.L. Colclough, A. Quinn, J. Wu, K. Talbot, M. Benatar, A.C. Nobre, M.W. Woolrich, and M.R. Turner  
Open Access Article

731 **Randomized study of adjunctive belimumab in participants with generalized myasthenia gravis**

K. Hewett, D.B. Sanders, R.A. Grove, C.L. Broderick, T.J. Rudo, A. Bassiri, M. Zvartau-Hind, and V. Bril, On behalf of the BEL115123 Study Group  
Open Access Article  Class of Evidence

732 **Temporal trends in multiple sclerosis prevalence and incidence in a large population**

D.L. Rotstein, H. Chen, A.S. Wilton, J.C. Kwong, R.A. Marrie, P. Gozdyra, K.M. Krysko, A. Kopp, R. Copes, and K. Tu

### What's Happening

733 **What's happening in *Neurology*\***

734 **What's happening in *Neurology*\* Clinical Practice**

735 **What's happening in *Neurology*\* Genetics**

736 **What's happening in *Neurology*\* Neuroimmunology & Neuroinflammation**

### Clinical Implications of Neuroscience Research

737 **Metabolic coupling of axons and glial cells: Implications for multiple sclerosis progression**

J. Correale, M.C. Ysraelit, and E.E. Benarroch

### Reflections: Neurology and the Humanities

745 **Break-in**

D. Hester

 Audio

### Video NeuroImages

746 **Video NeuroImages: Head titubation in anti-mGluR1 autoantibody-associated cerebellitis**

J.L. Pedrosa, L.A. Dutra, A.J. Espay, R. Höftberger, and O.G.P. Barsottini

 Video


### Resident & Fellow Section

748 **Clinical Reasoning: A 56-year-old woman with acute vertigo and diplopia**

R. Sharma, T. Chakraborty, F.K. Buadi, E. Beam, V.S. Pureza, G.L. Pagani-Estevez, and E.P. Flanagan

e1442 **Clinical Reasoning: A young woman with symmetric weakness and behavioral disturbance**

J. Rosenberg, W. Aamodt, S. Takvorian, and M. Mullen

 Podcast

e1448 **Teaching NeuroImages: Facial ulceration in stroke: An unusual and lesser-known complication described by Wallenberg**

L. MeiQi May, T.N. Soong Hul, T.L. Chris, J. Vijayan, and N.S. Chandran

e1450 **Teaching NeuroImages: DWI and EEG findings in Creutzfeldt-Jakob disease**

A. Ganesh, L.C. Hoyte, Y. Agha-Khani, and M.M.C. Yeung

### Disputes & Debates: Editors' Choice

753 **Editors' note: Teaching Video NeuroImages: Olivary enlargement and pharyngeal nystagmus**

M. Alcauskas and S. Galetta

753 **Reader response: Teaching Video NeuroImages: Olivary enlargement and pharyngeal nystagmus**

S. Bhattacharjee

754 **Reader response: Teaching Video NeuroImages: Olivary enlargement and pharyngeal nystagmus**

A. Mendez-Guerrero, R. Lopez-Blanco, and D. Uriarte-Perez de Urabayen

754 **Author response: Teaching Video NeuroImages: Olivary enlargement and pharyngeal nystagmus**

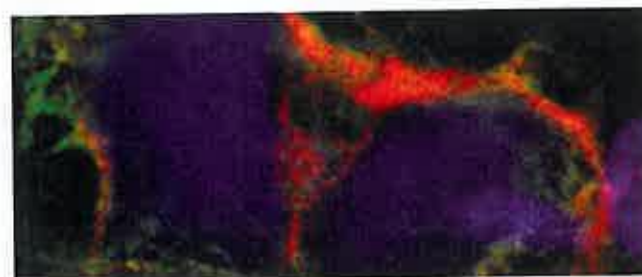
D.A. Yacovino and J.B. Finlay

### Correction

755 **Alemtuzumab CARE-MS I 5-year follow-up: Durable efficacy in the absence of continuous MS therapy**

### Department

**In the Next Issue of *Neurology*\***



 **Cover image**

IgA antibodies against the NMDAR demonstrated by cell-based assay and brain tissue immunostaining.

See page 726