

Neurology[®]

Table of Contents

Volume 85, Number 15, October 13, 2015
Neurology.org

THE MOST WIDELY READ AND HIGHLY CITED PEER-REVIEWED
NEUROLOGY JOURNAL



IN FOCUS

- 1265 Spotlight on the October 13 Issue
1282 This Week's *Neurology*[®] Podcast

EDITORIALS

- 1266 The olfactory side of Parkinson disease: Relevance for clinical practice
S. Rossi and M. Ulivelli
- 1268 Cognitive decline in Parkinson disease: How steep and crowded is the slope?
L.A. Hershey and G.M. Peavy

ARTICLES

- 1270 Is normosmic Parkinson disease a unique clinical phenotype?
D.H. Lee, J.S. Oh, J.H. Ham, J.J. Lee, I. Lee, P.H. Lee, J.S. Kim, and Y.H. Sohn
Editorial, p. 1266
- 1276 Longitudinal study of normal cognition in Parkinson disease
K. Pigott, J. Rick, S.X. Xie, H. Hurtig, A. Chen-Plotkin, J.E. Duda, J.F. Morley, L.M. Chahine, N. Dahodwala, R.S. Akhtar, A. Siderowf, J.Q. Trojanowski, and D. Weintraub
Editorial, p. 1268
- 1283 Large-scale assessment of polyglutamine repeat expansions in Parkinson disease
L. Wang, J.O. Aasly, G. Annesi, S. Bardien, M. Bozi, A. Brice, J. Carr, S.J. Chung, C. Clarke, D. Crosiers, A. Deuschländer, G. Eckstein, M.J. Farrer, S. Goldwurm, G. Garraux, G.M. Hadjigeorgiou, A.A. Hicks, N. Hattori, C. Klein, B. Jean, Y.J. Kim, S. Lesage, J.-J. Lin, T. Lynch, P. Lichtner, A.E. Lang, V. Mok, B. Jasinska-Myga, G.D. Mellick, K.E. Morrison, G. Opala, L. Pihlstrøm, P.P. Pramstaller, S.S. Park, A. Quattrone, E. Rogaeva, O.A. Ross, L. Stefanis, J.D. Stockton, P.A. Silburn, J. Theuns, E.K. Tan, H. Tomiyama, M. Toft, C. Van Broeckhoven, R.J. Uitti, K. Wirdefeldt, Z. Wszolek, G. Xiromerisiou, K.-C. Yueh, Y. Zhao, T. Gasser, D.M. Maraganore, R. Krüger, and M. Sharma, on behalf of the GEO-PD Consortium
- 1291 Comment: CAG repeats in idiopathic Parkinson disease—To screen or not to screen
A. Filla
- 1293 A geographical cluster of progressive supranuclear palsy in northern France
D. Caparros-Lefebvre, L.I. Golbe, V. Deramecourt, C.-A. Maurage, V. Huin, V. Buée-Scherrer, H. Obriot, B. Sablonnière, F. Caparros, L. Buée, and A.J. Lees
- 1299 Comment: Progressive supranuclear palsy and environmental toxins
J.C. Rucker and S.J. Frucht
- 1301 Basal ganglia pathology in ALS is associated with neuropsychological deficits
J. Machts, K. Loewe, J. Kaufmann, S. Jakubiczka, S. Abdulla, S. Petri, R. Dengler, H.-J. Heinze, S. Vielhaber, M.A. Schoenfeld, and P. Bede
- 1310 Eating behavior in frontotemporal dementia: Peripheral hormones vs hypothalamic pathology
R.M. Ahmed, S. Latheef, L. Bartley, M. Irish, G.M. Halliday, M.C. Kiernan, J.R. Hodges, and O. Piguet
- 1316 Comment: Toward a physiology of eating disorder in frontotemporal dementia
C.U. Onyike
- 1318 Time trends in incidence, case fatality, and mortality of intracerebral hemorrhage
W.M.T. Jolink, C.J.M. Klijn, P.J.A.M. Brouwers, L.J. Kappelle, and I. Vaartjes
- 1325 Allelic loss of 9p21.3 is a prognostic factor in 1p/19q codeleted anaplastic gliomas
A. Alentorn, C. Dehais, F. Ducray, C. Carpentier, K. Mokhtari, D. Figarella-Branger, O. Chinot, E. Cohen-Moyal, C. Ramirez, H. Loiseau, S. Elouahdani-Hamdi, P. Beauchesne, O. Langlois, C. Desenclos, J.-S. Guillamo, P. Dam-Hieu, F. Ghiringhelli, P. Colin, J. Godard, F. Parker, F. Dhermain, A.F. Carpentier, J.-S. Frenel, P. Menei, L. Bauchet, T. Faillot, M. Fesneau, D. Fontaine, M.-J. Motuo-Fotso, E. Vauleon, C. Gaultier, C. Le Guerinel, E.-M. Gueye, G. Noel, N. Desse, X. Durando, E. Barrascout, M. Wager, D. Ricard, I. Carpiuc, J.-Y. Delattre, and A. Idbaih, on behalf of the POLA Network

CONTINUED

Neurology[®]

Table of Contents

continued



VIEWS & REVIEWS

1332 Seizures as adverse events of antibiotic drugs:
A systematic review
R. Sutter, S. Rüegg, and S. Tschudin-Sutter

1342 Body mass index, physical activity, and risk of
adult meningioma and glioma: A meta-analysis
T. Niedermaier, G. Behrens, D. Schmid, I. Schlecht,
B. Fischer, and M.F. Leitzmann

REFLECTIONS: NEUROLOGY AND THE HUMANITIES

1351 Don't tell
P. Rousseau

VIDEO NEUROIMAGES

1353 Iridodonesis as a cause of recurrent vertigo
H. Kunte, F. Paul, F. Pache, J. Dörr, J. Bellmann-Strobl,
L. Harms, and G. Kronenberg

RESIDENT & FELLOW SECTION

e110 Clinical Reasoning: An 87-year-old woman with left-sided
numbness
S. Yaghi and M.S.V. Elkind

e116 Clinical Reasoning: A 56-year-old man with
cognitive impairment and difficulty tying his necktie
J.M. Baker, J. Salinas, and A.L. Berkowitz

e123 Media and Book Reviews: *Neuromuscular Disease:
A Case-Based Approach*
A.M. Yassin

WRITECLICK[®] EDITOR'S CHOICE

1354 Fine-tuning risk assessment with antiepileptic drug
use in pregnancy
G. Mawer, R. Bromley, G.A. Baker, K.J. Meador,
J. Clayton-Smith

1354 The *TMEM106B* locus and TDP-43 pathology in older
persons without FTL
D.W. Dickson, R. Rademakers, A.M. Nicholson:
Author Response: J.A. Schneider, L. Yu, D.A. Bennett

CORRECTION

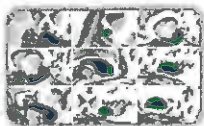
1355 Poor early relapse recovery affects onset of progressive
disease course in multiple sclerosis

DEPARTMENT

In the Next Issue of *Neurology*[®]

Podcast at Neurology.org CME Video Patient Page LOE classification LOE recommendation

Find us on Facebook [tinyurl.com/neurologyfan](https://www.facebook.com/Neurologyfan) twitter twitter.com/GreenJournal



Cover image: Subcortical shape differences across the ALS-ALS-FTD spectrum compared to controls. See page 1301.

Look for **Publish Ahead of Print** articles and editorials under the Ahead of Print tab at Neurology.org
