

Select figures listed on the Table of Contents only appear within the full-length articles online.

## In Focus

- 639 **Spotlight on the April 2 issue**
- 640 **This Week's *Neurology*<sup>®</sup> Podcast**

## Editorials

- 641 **Computerized seizure detection on ambulatory EEG: Finding the needles in the haystack**  
C. Juhász and M. Berg
- 643 **The prognostic value of ATN Alzheimer biomarker profiles in cognitively normal individuals**  
S.J.B. Vos and R. Duara
- 645 **Dietary patterns in early life pay dividends for midlife cognitive performance**  
G.L. Bowman and N. Scarmeas

- 647 **Patient-perceived risks of MS DMTs: Problems of communication and risk management?**  
G.V. McDonnell and J.J. Marriott

## Articles: Short Format

Full articles at [Neurology.org/N](http://Neurology.org/N)

- 649 **Automated seizure detection accuracy for ambulatory EEG recordings**  
K.A. González Otárula, Y. Mikhaeil-Demo, E.M. Bachman, P. Balaguera, and S. Schuele  
  - 🎧 CME Course 🗣️ Editorial, p. 641 🎧 Podcast
- 650 **Prognostic importance of apathy in syndromes associated with frontotemporal lobar degeneration**  
C.J. Lansdall, I.T.S. Coyle-Gilchrist, P. Vázquez Rodríguez, A. Wilcox, E. Wehmann, T.W. Robbins, and J.B. Rowe  
  - Open Access
- 651 **Clinical relevance of acute cerebral microinfarcts in vascular cognitive impairment**  
D.A. Ferro, H. van den Brink, L.G. Exalto, J.M.F. Boomsma, F. Barkhof, N.D. Prins, W.M. van der Flier, and G.J. Biessels, on behalf of the TRACE-VCI study group
- 652 **ATN profiles among cognitively normal individuals and longitudinal cognitive outcomes**  
A. Soldan, C. Pettigrew, A.M. Fagan, S.E. Schindler, A. Moghekar, C. Fowler, Q.-X. Li, S.J. Collins, C. Carlsson, S. Asthana, C.L. Masters, S. Johnson, J.C. Morris, M. Albert, and A.L. Gross  
  - 🗣️ Editorial, p. 643
- 653 **Cortical cholinergic denervation in primary progressive aphasia with Alzheimer pathology**  
M.-M. Mesulam, N. Lalehzari, F. Rahmani, D. Ohm, R. Shahidehpour, G. Kim, T. Gefen, S. Weintraub, E. Bigio, and C. Geula
- 654 **Dietary patterns during adulthood and cognitive performance in midlife: The CARDIA study**  
C.T. McEvoy, T. Hoang, S. Sidney, L.M. Steffen, D.R. Jacobs, Jr., J.M. Shikany, J.T. Wilkins, and K. Yaffe  
  - 🎧 CME Course 🗣️ Editorial, p. 645
- 655 **An unusual ryanodine receptor 1 (RYR1) phenotype: Mild calf-predominant myopathy**  
M. Jokela, G. Tasca, A. Vihola, E. Mercuri, P.-H. Jonson, S. Lehtinen, S. Välipakka, M. Pane, M. Donati, M. Johari, M. Savarese, S. Huovinen, P. Isohanni, J. Palmio, P. Hartikainen, and B. Udd

## 🗣️ Ahead of Print Articles and Editorials

[NPub.org/aheadofprint](http://NPub.org/aheadofprint)

Continued

656 **Revised Airlie House consensus guidelines for design and implementation of ALS clinical trials**

L.H. van den Berg, E. Sorenson, G. Gronseth, E.A. Macklin, J. Andrews, R.H. Baloh, M. Benatar, J.D. Berry, A. Chio, P. Corcia, A. Genge, A.K. Gubitzi, C. Lomen-Hoerth, C.J. McDermott, E.P. Pioro, J. Rosenfeld, V. Silani, M.R. Turner, M. Weber, B.R. Brooks, R.G. Miller, and H. Mitsumoto, for the Airlie House ALS Clinical Trials Guidelines Group

Open Access

657 **Traditional risk factors may not explain increased incidence of myocardial infarction in MS**

R.A. Marrie, A. Garland, S.A. Schaffer, R. Fransoo, S. Leung, M. Yogendran, E. Kingwell, and H. Tremlett

658 **A survey of risk tolerance to multiple sclerosis therapies**

R.J. Fox, C. Cosenza, L. Cripps, P. Ford, M. Mercer, S. Natarajan, A. Salter, T. Tyry, and S.S. Cofield

Open Access  Editorial, p. 647

659 **Risk factors for suicidality in Huntington disease: An analysis of the 2CARE clinical trial**

A. McGarry, M.P. McDermott, K. Kieburz, W.L.A. Fung, E. McCusker, J. Peng, E.A. de Bleeck, and M. Cudkovic, for the Huntington Study Group 2CARE Investigators and Coordinators

660 **NMDA receptor antagonists and pain relief: A meta-analysis of experimental trials**

T. Thompson, F. Whiter, K. Gallop, N. Veronesed, M. Solmi, P. Newton, and B. Stubbs

### What's Happening

661 **What's happening in *Neurology*\***

662 **What's happening in Innovations in Care Delivery**

### Views & Reviews

663 **Neuromuscular adverse events associated with anti-PD-1 monoclonal antibodies: Systematic review**

A. Johansen, S.J. Christensen, D. Scheie, J.L.S. Højgaard, and D. Kondziella

### Clinical/Scientific Notes

675 **Cortical and bithalamic hypometabolism by FDG-PET/CT in a patient with sporadic fatal insomnia**

T. Haight, C. Mendiola, L. Solnes, M. Cohen, J. Safar, L.B. Schonberger, and J.C. Probascio

### NeuroImages

678 **Poliomyelitis in ancient Greece (5th century BC)?**

E. Varotto, V. Nizzo, and F.M. Galassi

### Resident & Fellow Section

680 **Pearls & Oysters: Bismuth neurotoxicity from use of topical bismuth dressing for burns**

V. Saini, R. Chalfin, J. Leon, and J. Margolesky

e1663 **Teaching NeuroImages: In vivo visualization of Edinger comb and Wilson pencils**

A. Horn, S. Ewert, E.J.L. Alho, M. Axer, H. Heinsen, E.T. Fonoff, J.R. Polimeni, and T.M. Herrington

e1665 **Teaching NeuroImages: A rare case of Jacobsen syndrome with global diffuse hypomyelination of brain**

H. Patel, A. Kumar, G. Raymond, and G. Mainali

e1667 **Teaching Video NeuroImages: Myoclonus as the presenting feature of Wilson disease**

N. Kumar and D. Kumar

 Video

### Disputes & Debates: Editors' Choice

682 **Editors' note: The efficacy of nonpharmacologic intervention for orthostatic hypotension associated with aging**

A. Lewis and S. Galetta

682 **Reader response: The efficacy of nonpharmacologic intervention for orthostatic hypotension associated with aging**

V.K. Gupta

683 **Author response: The efficacy of nonpharmacologic intervention for orthostatic hypotension associated with aging**

J. Frith and J.L. Newton

683 **Reader response: The efficacy of nonpharmacologic intervention for orthostatic hypotension associated with aging**

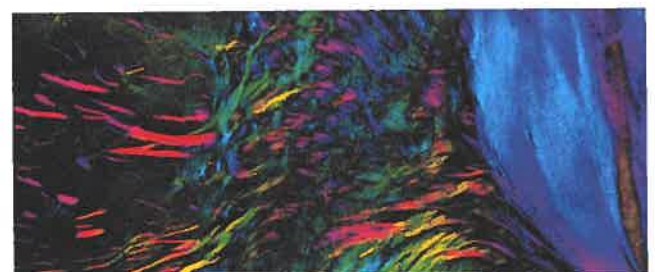
G.K. Vilanilam

### Retraction

684 **Lucky and the root doctor**

### Department

In the Next Issue of *Neurology*\*



 Cover image

Wilson pencils.

See page e1663