

Select figures listed on the Table of Contents only appear within the full-length articles online.

## In Focus

- 629 **Spotlight on the April 3 issue**
- 630 **This Week's Neurology® Podcast**

## Editorials

- 631 **Central vein sign in multiple sclerosis: Ready for front and center?**  
A.E. Miller and P.A. Calabresi
- 633 **Remodel mitochondria and get energized**  
J. Vissing and C. Angelini
- 635 **Vascular disease and cerebral amyloid deposition**  
O.L. Lopez and P. Maillard

## ➤ Ahead of Print Articles and Editorials

NPub.org/aheadofprint

## Articles: Short Format

Full articles at Neurology.org/N

- 637 **Value of the central vein sign at 3T to differentiate MS from seropositive NMOSD**  
R. Cortese, L. Magnollay, C. Tur, K. Abdel-Aziz, A. Jacob, F. De Angelis, M.C. Yiannakas, F. Prados, S. Oursellin, T.A. Yousry, F. Barkhof, and O. Ciccarelli  
➤ Editorial, p. 631 ➤ Class of Evidence
- 638 **Sun exposure over the life course and associations with multiple sclerosis**  
H. Tremlett, F. Zhu, A. Ascherio, and K.L. Munger
- 639 **Epileptogenic role of occult temporal encephalomeningocele: Case-control study**  
S. Gasparini, E. Ferlazzo, G. Pustorino, M. Ascoli, V. Clandi, C. Sueri, S. Calabrò, M. Campello, E. Africa, A. Gangemi, P. Versace, and U. Aguglia
- 640 **Randomized, dose-ranging safety trial of cannabidiol in Dravet syndrome**  
O. Devinsky, A.D. Patel, E.A. Thiele, M.H. Wong, R. Appleton, C.L. Harden, S. Greenwood, G. Morrison, and K. Sommerville, on behalf of the GWPCARE1 Part A Study Group  
➤ CME Course ➤ Open Access Article ➤ Class of Evidence
- 641 **Randomized dose-escalation trial of elamipretide in adults with primary mitochondrial myopathy**  
A. Karaa, R. Haas, A. Goldstein, J. Vockley, W.D. Weaver, and B.H. Cohen  
➤ CME Course ➤ Editorial, p. 633 ➤ Open Access Article  
➤ Class of Evidence
- 642 **CPAP as treatment of sleep apnea after stroke: A meta-analysis of randomized trials**  
A.-K. Brill, T. Horvath, A. Sella, M. Camilo, A.G. Haynes, S.R. Ott, M. Egger, and C.L. Bassetti
- 643 **Clinical value of neurofilament and phospho-tau/tau ratio in the frontotemporal dementia spectrum**  
L.H.H. Meeter, E.G. Vijverberg, M. Del Campo, A.J.M. Rozemuller, L. Donker Kaat, F. Jan de Jong, W.M. van der Flier, C.E. Teunissen, J.C. van Swieten, and Y.A.L. Pijnenburg  
➤ Open Access Article ➤ Class of Evidence
- 644 **Cognitive impairment and intracranial atherosclerotic stenosis in general population**  
M.F.K. Suri, J. Zhou, Y. Qiao, H. Chu, A.I. Qureshi, T. Mosley, R.F. Gottesman, L. Wruck, A.R. Sharrett, A. Alonso, and B.A. Wasserman
- 645 **Arterial stiffness and dementia pathology: Atherosclerosis Risk in Communities (ARIC)-PET Study**  
T.M. Hughes, L.E. Wagenknecht, S. Craft, A. Mintz, G. Heiss, P. Palta, D. Wong, Y. Zhou, D. Knopman, T.H. Mosley, and R.F. Gottesman  
➤ Editorial, p. 635

Continued

646 **Progressive neurodegeneration following spinal cord injury: Implications for clinical trials**

G. Ziegler, P. Grabher, A. Thompson, D. Altmann, M. Hupp, J. Ashburner, K. Friston, N. Welskopf, A. Curt, and P. Freund  
Open Access Article

**What's Happening**

- 647 **What's happening in *Neurology*\***
- 648 **What's happening in *Neurology*\* *Clinical Practice***
- 649 **What's happening in *Neurology*\* *Genetics***
- 650 **What's happening in *Neurology*\* *Neuroimmunology & Neuroinflammation***
- 651 **What's happening in *Innovations in Care Delivery***  
B.C. Callaghan and K.A. Kerber

**Special Article**

- 652 **Quality improvement in neurology: Neuro-oncology quality measurement set**  
J.T. Jordan, A.E. Sanders, T. Armstrong, T. Asher, A. Bennett, E. Dunbar, N. Mohile, P.L. Nghiemphu, T.R. Smith, and D.E. Ney

**Reflections: Neurology and the Humanities**

- 659 **Doll's eyes**  
A. Shah  
🔊 Audio

**Video NeuroImages**

- 660 **Video NeuroImages: Paraneoplastic spinal myoclonus associated with Caspr2 antibodies**  
H. Hines, N.M. Murray, S. Ahmad, S. Jaradeh, and C.A. Gold  
📺 Video

**Resident & Fellow Section**

- e1267 **Clinical Reasoning: A 53-year-old woman with headache and altered mental status**  
K.M. Spera, C.T. Doughy, and S. Prasad
- 662 **International Issues: A guide to US academic global health programs in neurology**  
R.D. Samudralwar, A. Goss, K. Rimmer, K. Shetler, A. Navis, O.K. Siddiqi, J.H. Chin, and K.T. Thakur
- e1271 **Teaching NeuroImages: Autosomal recessive spastic ataxia of Charlevoix-Saguenay: Typical MRI findings**  
A. Blswas, M. Varman, S. Yoganathan, P.K. Subhash, and S. Mani
- e1273 **Teaching Video NeuroImages: Sustained clonus of the upper extremity**  
J.E. Slegler and X. Zhou  
📺 Video

**Disputes & Debates: Editors' Choice**

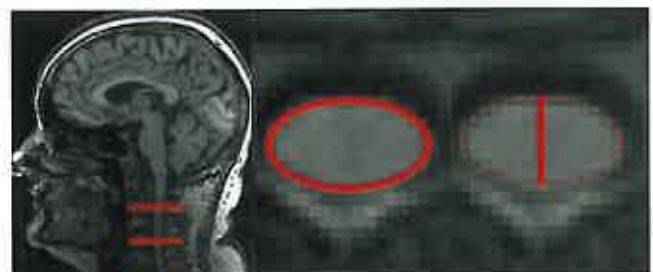
- 666 **Editors' note: Magnesium, hemostasis, and outcomes in patients with intracerebral hemorrhage**  
M. Alcauskas and S. Galetta
- 666 **Reader response: Magnesium, hemostasis, and outcomes in patients with intracerebral hemorrhage**  
J. Zheng, Z. Ye, and C. You
- 667 **Author response: Magnesium, hemostasis, and outcomes in patients with intracerebral hemorrhage**  
E.M. Liotta, S. Prabhakaran, and M.B. Maas
- 667 **Editors' note: 25-Hydroxyvitamin D deficiency and risk of MS among women in the Finnish Maternity Cohort**  
M. Alcauskas and S. Galetta
- 668 **Reader response: 25-Hydroxyvitamin D deficiency and risk of MS among women in the Finnish Maternity Cohort**  
A. Brallion
- 668 **Author response: 25-Hydroxyvitamin D deficiency and risk of MS among women in the Finnish Maternity Cohort**  
K.L. Munger, A. Ascherio, M. Soilu-Hänninen, H.-M. Surcel, and J. Älvo

**Correction**

- 669 **Randomized dose-escalation trial of elamipretide in adults with primary mitochondrial myopathy**

**Department**

**In the Next Issue of *Neurology*\***



**📺 Cover image**

Longitudinal changes in spinal cord MRI indices at cervical level C2/C3 in a patient following spinal cord injury.  
See page 646