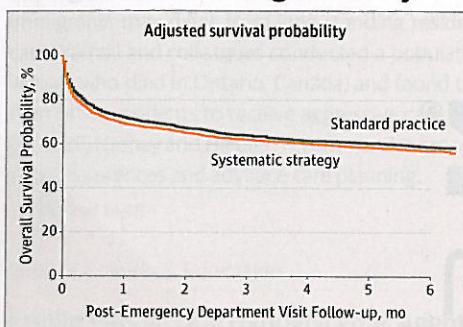


Research

CARING FOR THE CRITICALLY ILL PATIENT

Intensive Care Unit Triage of Elderly Patients

1450



It is unclear whether elderly patients who are critically ill are likely to benefit from admission to an intensive care unit (ICU). Guidet and colleagues studied 3036 critically ill patients aged 75 years or older who were seen in emergency departments of 24 hospitals in France; the hospitals were randomly assigned to promote systematic ICU admission or to follow standard practice.

The intervention group increased ICU admissions of elderly patients but did not reduce their 6-month mortality. In an Editorial, Angus considers the evidence that ICU triage may safely reduce ICU beds, care, and costs.

✚ Editorial 1443

✚ CME jamanetwork.com/learning

Oral Semaglutide for Type 2 Diabetes

1460

Glucagon-like peptide-1 receptor agonists, such as semaglutide, can reduce hypoglycemia, but oral formulations of these agents are susceptible to proteolytic degradation in the gastrointestinal tract. In a randomized trial of 632 patients with type 2 diabetes and insufficient glycemic control, Davies and colleagues demonstrated that oral semaglutide resulted in better glycemic control than placebo.

✚ CME jamanetwork.com/learning

Blood Transfusions From Previously Pregnant Donors

1471

Transfusion-related acute lung injury, the most common cause of transfusion-related mortality, is associated with transfusions from female donors with a history of pregnancy. Caram-Deelder and colleagues conducted a retrospective cohort study of 31118 first-time transfusion recipients and found that transfusion of red blood cells from an ever-pregnant female donor, compared with a male donor, was associated with increased all-cause mortality among male but not female patients. In an Editorial, Cable and Edgren note several limitations of this study and recommend additional investigation.

✚ Editorial 1445

✚ Animated Summary Video jama.com CME jamanetwork.com/learning



Humanities

Poetry and Medicine

1505 Red Is the Color of Time
M Wynn

JAMA Revisited

1506 *Cursus Honorum*, Or How to Get Ahead in the Medical World

Opinion

Viewpoint

1433 The Pathway to Patient Data Ownership and Better Health
KA Mikk, HA Sleeper, and EJ Topol

1435 The Misuse of Meta-analysis in Nutrition Research
ND Barnard, WC Willett, and EL Ding

1437 Mitigating the Mental and Physical Health Consequences of Hurricane Harvey
JM Shultz and S Galea

1439 Taking the "Public" Out of Public Reporting of Percutaneous Coronary Intervention
RK Wadhwa and DL Bhatt

A Piece of My Mind

1441 Better

J Gregg

Editorial

1443 Admitting Elderly Patients to the Intensive Care Unit—Is it the Right Decision?
DC Angus

1445 Blood Transfusions From Previously Pregnant Women and Mortality: Interpreting the Evidence
RG Cable and G Edgren

1448 End-of-Life Care Among Immigrants: Disparities or Differences in Preferences?
MO Harhay and SD Halpern

LETTERS

Research Letter

1498 Acute Zika Virus Infection as a Risk Factor for Guillain-Barré Syndrome in Puerto Rico
E Dirlikov and Coauthors

Comment & Response

1500 Acupuncture for Stress Urinary Incontinence

1501 Acupuncture for Infertility in Polycystic Ovary Syndrome

1502 Acupuncture and Sham Acupuncture for Pain Relief

Editor in Chief
Howard Bauchner, MD

134 YEARS
OF CONTINUOUS
PUBLICATION

Research (continued)

CARING FOR THE CRITICALLY ILL PATIENT

Immigrant Status and End-of-Life Care in Canada

1479

Immigrants may differ from long-standing residents in their preferences for end-of-life care. Yarnell and colleagues conducted a population-based cohort study of 967 013 individuals who died in Ontario, Canada, and found that recent immigrants were more likely than other residents to receive aggressive care and to die in an intensive care unit. In an Editorial, Harhay and Halpern recommend more research to account for differences in patient preferences and advance care planning.

 Editorial 1448

Clinical Review & Education

Insulin Plus an Oral Hypoglycemic Agent for Type 2 Diabetes


1489

In this Clinical Evidence Synopsis summarizing a Cochrane review of 37 randomized clinical trials, Vos and Rutten conclude that patients with type 2 diabetes who have not achieved optimal glycemic control with insulin monotherapy can decrease their hemoglobin A_{1c} level by adding an oral blood glucose-lowering agent.

Endocrine Treatment of Gender Dysphoria

1491

Transgender individuals may experience gender dysphoria because their gender identity differs from their birth-assigned sex. In this JAMA Clinical Guidelines Synopsis of a guideline developed by the Endocrine Society, Radix and Davis discuss the clinical management of individuals with gender incongruence and gender dysphoria.

 Author Audio Interview jama.com

Multiple Hyperpigmented Macules in a Child

1493



This JAMA Clinical Challenge by Maya and colleagues presents a 7-month-old infant girl with a 2-month history of sharply marginated, nonscaly brown macules on her back and thighs. What would you do next?



JAMA Patient Page

1514 Risks of Codeine and Tramadol in Children

NEWS & ANALYSIS

Medical News & Perspectives

1427 Study Questions Use of Acid Suppressors to Curb Mild Infant Reflux

The JAMA Forum

1429 Public Reporting of Surgical Outcomes: Surgeons, Hospitals, or Both?

1431 Global Health

Adverse Outcomes of Reducing Foreign Aid for HIV Programs

Mental Health Burden Increasing in Eastern Mediterranean Region

Corruption Poses Critical Challenge to Global Health Efforts

1432 News From the FDA

Leukemia Drug Makes a Comeback

Remote Control Mammography

Antibacterial Inhibits Resistance

Online @ jama.com



Editor's Audio Summary

Howard Bauchner, MD, summarizes and comments on this week's issue.

Author Interview

AUDIO Interview with Andrew M. Davis, MD, MPH, and Asa Radix, MD, MPH, authors of "Endocrine Treatment of Gender-Dysphoric/Gender-Incongruent Persons"

Animated Summary Video



Mortality After Transfusion From Female Blood Donors With and Without a History of Pregnancy

Departments

1413 Staff Listing

1495 CME Questions

1508 Classified Advertising

1511 Journal Advertiser Index

1513 Contact Information

Instructions for Authors

jama.com/public/instructionsforauthors.aspx