

## ISSUE @ A GLANCE

**Frontiers in today's chronic coronary syndromes: detecting obstructive disease, role of beta-blockers and of anticoagulants**

T.F. Lüscher

1387

## CardioPulse

**Authorship: the Emerging Importance of Accountability**

F. Alfonso

1391

**ESC Focuses on Greater Financial Disclosure for All Volunteers**

C. Boerner

1392

**Rick A Nishimura clinician and educator**

M. Nicholls

1393

**Leadership in Cardiovascular Medicine**

A.A. Shaikh, D.L. Bhatt, and A. Kalra

1395

**Understanding ARNIs**

R. Ferrari, J. Silva-Cardoso, and M.C. Fonseca

1397

## FAST TRACK CLINICAL RESEARCH

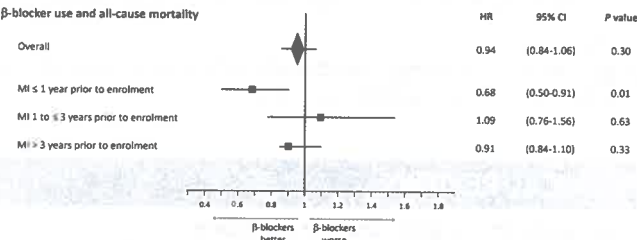
### Coronary artery disease

**$\beta$ -blockers, calcium antagonists, and mortality in stable coronary artery disease: an international cohort study**

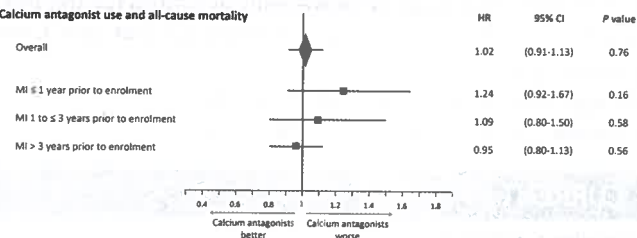
E. Sorbets, P. Gabriel Steg, R. Young, N. Danchin, N. Greenlaw, I. Ford, M. Tendera, R. Ferrari, B. Merkely, A. Parkhomenko, C. Reid, J.-C. Tardif, and K.M. Fox, for the CLARIFY investigators

1399

$\beta$ -blocker use and all-cause mortality



Calcium antagonist use and all-cause mortality



### Editorial

**Can we trust observational data for clinical decision-making?**

S.E. Nissen and G.W. Reed

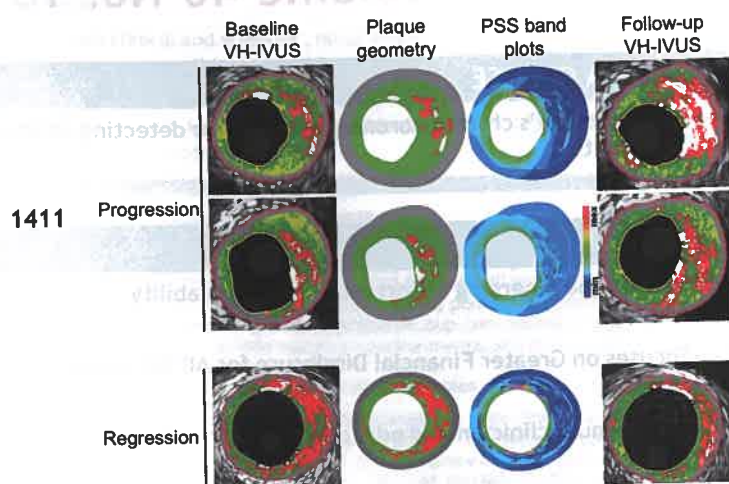
1408

## CLINICAL RESEARCH

### Coronary artery disease

**Impact of combined plaque structural stress and wall shear stress on coronary plaque progression, regression, and changes in composition**

C. Costopoulos, L.H. Timmins, Y. Huang, O.Y. Hung, D.S. Molony, A.J. Brown, E.L. Davis, Z. Teng, J.H. Gillard, H. Samady, and M.R. Bennett



1411

### Editorial

**Evaluation of individual plaque risk based on plaque anatomic and biomechanical characteristics: methodologies and clinical applications are approaching an inflection point**  
P.H. Stone

1423

**Prediction of obstructive coronary artery disease and prognosis in patients with suspected stable angina**  
J. Reeh, C.B. Thering, M. Heitmann, S. Højberg, C. Sørum, J. Bech, D. Husum, H. Dominguez, T. Sehestedt, T. Hermann, K.W. Hansen, L. Simonsen, S. Galatius, and E. Prescott

1426

### Editorial

**Diagnoses and outcomes in patients with suspected angina: what are they trying to tell us?**  
F. Andreotti, F. Crea, and U. Sechtem

1436

## CLINICAL REVIEWS

### Controversies in cardiovascular medicine

**Should NICE guidelines be universally accepted for the evaluation of stable coronary disease? A debate**  
H.S. Hecht, L. Shaw, Y.S. Chandrashekhar, J.J. Bax, and J. Narula

1440

### Clinical update

**Management of left main disease: an update**  
J. Fajadet, D. Capodanno, and G.W. Stone

1454

## CURRENT OPINION

### Vascular medicine

**Anti-thrombotic options for secondary prevention in patients with chronic atherosclerotic vascular disease: what does COMPASS add?**  
K.A.A. Fox, J.W. Eikelboom, S.S. Anand, D.L. Bhatt, J. Bosch, S.J. Connolly, R.A. Harrington, P.G. Steg, and S. Yusuf

1466

## DISCUSSION FORUM

**The time has come to use coronary computed tomography angiography in patients with multivessel coronary artery disease**  
D. Andreini, Y. Onuma, A.L. Bartorelli, and P.W. Serruys

1472

**Response to letter: the time has come to use coronary computed tomography angiography in patients with multivessel coronary artery disease**  
A. Colombo and F. Giannini

1473

## CARDIOVASCULAR FLASHLIGHTS

**Incidentally discovered left ventricular pseudoaneurysm after silent myocardial infarction occurred in a young woman with peritoneal dialysis**

*R. Yoshida, K. Takagi, Y. Morita, and I. Morishima*

1474

**Progression of an ascending aortic dilatation with compression of cardiac structures**

*H. Liao, S. He, Y. He, and X. Chen*

1475



Open Access Paper



For the podcast associated with this article, please visit <https://academic.oup.com/eurheartj/pages/Podcasts>



Visit EHJ's mobile site  
<https://academic.oup.com/eurheartj>



[www.eurheartj.org](http://www.eurheartj.org)