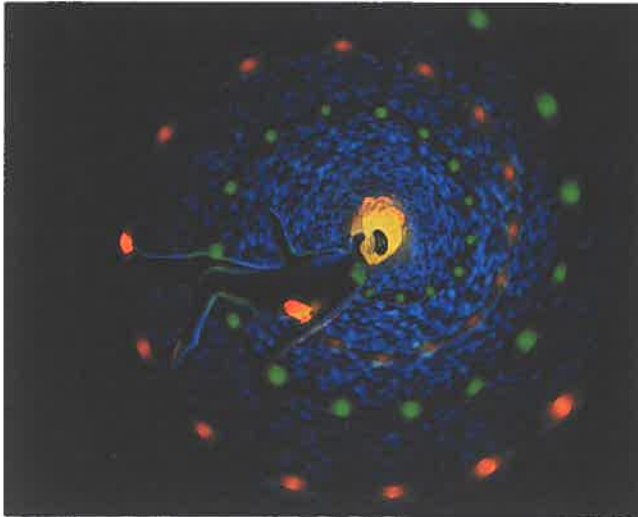


BRAIN



Cover image: The 'maelstrom of encephalitis', depicting a patient with their 'brain on fire' entering the illness experience of a vortex. The whirlpool is constructed from fluorescence imaging and structurally resembles a germinal centre, its edges emanating from pelvic (orange) and cervical lymph nodes (green), with immune cells from both finally reaching the brain. From Al-Diwani et al. Cervical lymph nodes and ovarian teratomas as germinal centres in NMDA receptor-antibody encephalitis. Pp. 2742-54.

Image created by Mr Ram Gulrajani (retired Respiratory Nurse Consultant and encephalitis survivor), Robbie Dawson (graphical artist), A. Al-Diwani, J. Theorell, V. Damato and S. Irani.

Contents

Editorial

Targeting enkephalins and pituitary adenylate cyclase-activating polypeptide (PACAP) in migraine

M. Ashina
2619

Essay

On St Teresa of Avila's mysticism: epilepsy and/or ecstasy?

G. Huberfeld, J. Pallud, E. Drouin and P. Hautecoeur
2621

Scientific Commentaries

Does the magnitude of lipid lowering with statin therapy indicate higher intracranial bleeding risk?

A. H. Katsanos and A. Shoamanesh
2624

Rare human ATP6V1A variants provide unique insights into V-ATPase functions

M. Groszer
2626

Peripheral tau as a biomarker for neurodegenerative diseases: is life on Earth, life on Mars?

B. N. Dugger, D. Harvey, T. G. Beach and C. H. Adler
2629

Alzheimer's disease, cerebrovascular disease and dementia: lump, split or integrate?

G. J. Biessels
2632



Review Articles

Lyme neuroborreliosis: known knowns, known unknowns

J. J. Halperin, R. Eikeland, J. A. Branda and R. Dersch

2635

A new science of emotion: implications for functional neurological disorder

J. Jungilligens, S. Paredes-Echeverri, S. Popkirov, L. F. Barrett and D. L. Perez

2648

Reports

Dual enkephalinase inhibitor PL37 as a potential novel treatment of migraine: evidence from a rat model

A. Descheemaeker, H. Poras, M. Wurm, P. Luccarini, T. Ouimet and R. Dallel

2664

ATXN2 intermediate expansions in amyotrophic lateral sclerosis

J. D. Glass, R. Dewan, J. Ding, J. R. Gibbs, C. Dalgard, P. J. Keagle, Shankaracharya, A. García-Redondo, B. J. Traynor, R. Chia and J. E. Landers

2671

Original Articles

Genetically predicted on-statin LDL response is associated with higher intracerebral haemorrhage risk

E. Mayerhofer, R. Malik, L. Parodi, S. Burgess, A. Harloff, M. Dichgans, J. Rosand, C. D. Anderson and M. K. Georgakis

2677

Phenotypic and genetic spectrum of ATP6V1A encephalopathy: a disorder of lysosomal homeostasis

R. Guerrini, D. Mei, K. Kerti-Szigeti, S. Pepe, M. K. Koenig, G. Von Allmen, M. T. Cho, K. McDonald, J. Baker, V. Bhamhani, Z. Powis, L. Rodan, R. Nabbout, G. Barcia, J. A. Rosenfeld, C. A. Bacino, C. Mignot, L. H. Power, C. J. Harris, D. Marjanovic, R. S. Møller, T. B. Hammer, The DDD Study, R. K. Filppula, P. Vieira, C. Hildebrandt, S. Sacharow, Undiagnosed Diseases Network, L. Maragliano, F. Benfenati, K. Lachlan, A. Benneche, F. Petit, J.-M. de Sainte Agathe, B. Hallinan, Y. Si, I. M. Wentzensen, F. Zou, V. Narayanan, N. Matsumoto, A. Boncristiano, G. la Marca, M. Kato, K. Anderson, C. Barba, L. Sturiale, D. Garozzo, R. Bei, ATP6V1A collaborators, L. Masuelli, V. Conti, G. Novarino and A. Fassio

2687

Somatic variants in diverse genes leads to a spectrum of focal cortical malformations

D. Lai, M. Gade, E. Yang, H. Y. Koh, J. Lu, N. M. Walley, A. F. Buckley, T. T. Sands, C. I. Akman, M. A. Mikati, G. M. McKhann, J. E. Goldman, P. Canoll, A. L. Alexander, K. L. Park, G. K. Von Allmen, O. Rodziyevska, M. B. Bhattacharjee, H. G. W. Lidov, H. Vogel, G. A. Grant, B. E. Porter, A. H. Poduri, P. B. Crino and E. L. Heinzen

2704

Biallelic CACNA2D1 loss-of-function variants cause early-onset developmental epileptic encephalopathy

S. Dahimene, L. von Elsner, T. Holling, L. S. Mattas, J. Pickard, D. Lessel, K. S. Pilch, I. Kadurin, W. S. Pratt, I. B. Zhulin, H. Dai, M. Hempel, M. R. Z. Ruzhnikov, K. Kutsche and A. C. Dolphin

2721

Neurodegenerative phagocytes mediate synaptic stripping in Neuro-HIV

G. Di Liberto, K. Egervari, M. Kreutzfeldt, C. M. Schürch, E. Hewer, I. Wagner, R. Du Pasquier and D. Merkler

2730

Cervical lymph nodes and ovarian teratomas as germinal centres in NMDA receptor-antibody encephalitis

A. Al-Diwani, J. Theorell, V. Damato, J. Bull, N. McGlashan, E. Green, A.-K. Kienzler, R. Harrison, T. Hassanali, L. Campo, M. Browne, A. Easton, H. Soleymani majd, K. Tenaka, R. Iorio, R. C. Dale, P. Harrison, J. Geddes, D. Quedsted, D. Sharp, S.-T. Lee, D. W. Nauen, M. Makuch, B. Lennox, D. Fowler, F. Sheerin, P. Waters, M. I. Leite, A. E. Handel and S. R. Irani

2742

Tau protein quantification in skin biopsies differentiates tauopathies from alpha-synucleinopathies

E. Vacchi, E. Lazzarini, S. Pinton, G. Chiaro, G. Disanto, F. Marchi, T. Robert, C. Staedler, S. Galati, C. Gobbi, L. Barile, A. Kaelin-Lang and G. Meli

2755

Motor neuron TDP-43 proteinopathy in progressive supranuclear palsy and corticobasal degeneration

Y. Riku, Y. Iwasaki, S. Ishigaki, A. Akagi, M. Hasegawa, K. Nishioka, Y. Li, M. Riku, T. Ikeuchi, Y. Fujioka, H. Miyahara, J. Sone, N. Hattori, M. Yoshida, M. Katsuno and G. Sobue

2769

Glymphatic system impairment in multiple sclerosis: relation with brain damage and disability

A. Carotenuto, L. Cacciaguerra, E. Pagani, P. Preziosa, M. Filippi and M. A. Rocca

2785

Progression is independent of relapse activity in early multiple sclerosis: a real-life cohort study

E. Portaccio, A. Bellinva, M. Fonderico, L. Pastò, L. Razzolini, R. Totaro, D. Spitaleri, A. Lugaresi, E. Cocco, M. Onofri, F. Di Palma, F. Patti, D. Maimone, P. Valentino, P. Confalonieri, A. Protti, P. Sola, G. Lus, G. T. Maniscalco, V. B. Morra, G. Salemi, F. Granella, I. Pesci, R. Bergamaschi, U. Aguglia, M. Vianello, M. Simone, V. Lepore, P. Iaffaldano, M. Filippi, M. Trojano and M. P. Amato; on behalf of the Italian Multiple Sclerosis Register Centers Group

2796

Ultrasound delivery of a TrkA agonist confers neuroprotection to Alzheimer-associated pathologies

K. Xhima, K. Markham-Coultes, R. H. Kofoed, H. U. Saragovi, K. Hynynen and I. Aubert

2806

Cerebral amyloid angiopathy interacts with neuritic amyloid plaques to promote tau and cognitive decline

J. S. Rabin, E. Nichols, R. La Joie, K. B. Casaleto, P. Palta, K. Dams-O'Connor, R. G. Kumar, K. M. George, C. L. Satizabal, J. A. Schneider, J. Pa and A. M. Brickman

2823

N-terminal and mid-region tau fragments as fluid biomarkers in neurological diseases

A. Snellman, J. Lantero-Rodriguez, A. Emeršič, A. Vrillon, T. K. Karikari, N. J. Ashton, M. G. Kramberger, S. Čučnik, C. Paquet, U. Rot, H. Zetterberg and K. Blennow

2834

Microglial large extracellular vesicles propagate early synaptic dysfunction in Alzheimer's disease

M. Gabrielli, I. Prada, P. Joshi, C. Falcicchia, G. D'Arrigo, G. Rutigliano, E. Battocchio, R. Zenatelli, F. Tozzi, A. Radeghieri, O. Arancio, N. Origlia and C. Verderio

2849

Structural (dys)connectivity associates with cholinergic cell density in Alzheimer's disease

C.-P. Lin, I. Frigerio, B. D. C. Boon, Z. Zhou, A. J. M. Rozemuller, F. H. Bouwman, M. M. Schoonheim, W. D. J. van de Berg and L. E. Jonkman

2869

Trigeminal microvascular decompression for short-lasting unilateral neuralgiform headache attacks

G. Lamburu, S. Lagrata, A. Levy, S. Cheema, I. Davagnanam, K. Rantell, N. Kitchen, L. Zrinzo and M. Matharu

2882

Dysregulation of serum prolactin links the hypothalamus with female nociceptors to promote migraine

M. Watanabe, C. M. Kopruszinski, A. Moutal, D. Ikegami, R. Khanna, Y. Chen, S. Ross, K. Mackenzie, J. Stratton, D. W. Dodick, E. Navratilova and F. Porreca

2894

A recurrent machine learning model predicts intracranial hypertension in neurointensive care patients

N. Schweingruber, M. M.-D. Mader, A. Wiehe, F. Röder, J. Götsche, S. Kluge, M. Westphal, P. Czorlich and C. Gerloff

2910

Brain volume abnormalities and clinical outcomes following paediatric traumatic brain injury

N. J. Bourke, C. Demarchi, S. De Simoni, R. Samra, M. C. Patel, A. Kuczynski, Q. Mok, N. Wimalasundera, F. Vargha-Khadem and D. J. Sharp

2920

Book Review

Revisiting a great Victorian neurosurgeon

M. Powell

2935

Letter to the Editor

Smarter adaptive platform clinical trials in neurology: a showcase for UK innovation

A. R. Mehta, S. Pal, J. Chataway, J. R. Carpenter, M. K. B. Parmar and S. Chandran

e64

Arcuate fasciculus' middle and ventral temporal connections undercut by tract-tracing evidence

Y. Becker, K. K. Loh, O. Coulon and A. Meguerditchian

e66

Reply: Arcuate fasciculus' middle and ventral temporal connections undercut by tract-tracing evidence

D. Giampiccolo and H. Duffau

e69

Correction

Correction to: Brain amyloid- β oligomers in ageing and Alzheimer's disease

e72