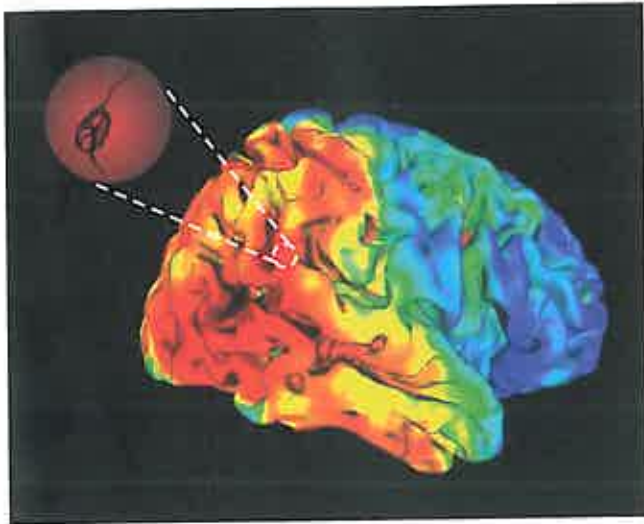


BRAIN

A JOURNAL OF NEUROLOGY



Cover image: Distribution of tau PET tracer ^{18}F -AV1451 in a patient with Alzheimer's disease. Hot colours indicate greater tau load. The magnified image (from Alzheimer, 1911) represents a neurofibrillary tangle consisting of tau deposits. Relates to Ossenkoppele et al. Tau PET patterns mirror clinical and neuroanatomical variability in Alzheimer's disease. Pp. 1551–1567.

Alzheimer A. (1911). Über eigenartige Krankheitsfälle des späteren. *Zeitschr Ges Neurol Psych* 4: 356:385.

Contents

Editorial

D. M. Kullmann
1311

Scientific Commentaries

Cytotoxic T cells go awry in inclusion body myositis
R. Hohlfeld and H. Schulze-Koops
1312

Cerebellum in Alzheimer's disease and frontotemporal dementia: not a silent bystander
J. D. Schmahmann
1314

Monitoring the progression of Alzheimer's disease with τ -PET
D. R. Thal and R. Vandenberghe
1318

Distinct tau PET imaging patterns in typical and atypical Alzheimer's disease
M. Sarazin, J. Lagarde and M. Botlaender
1321

Review Article

Activational and effort-related aspects of motivation: neural mechanisms and implications for psychopathology
J. D. Salamone, S. E. Yohn, L. López-Cruz, N. San Miguel and M. Correa
1325

Original Articles

Association of inclusion body myositis with T cell large granular lymphocytic leukaemia
S. A. Greenberg, J. L. Pinkus, A. A. Amato, T. Kristensen and D. M. Dorfman
1348

TRPA1 mediates trigeminal neuropathic pain in mice downstream of monocytes/macrophages and oxidative stress
G. Trevisan, S. Benemei, S. Materazzi, F. De Logu, G. De Siena, C. Fusi, M. Fortes Rossato, E. Coppi, I. M. Marone, J. Ferreira, P. Geppetti and R. Nassini

1361

SYNE1 ataxia is a common recessive ataxia with major non-cerebellar features: a large multi-centre study
M. Synofzik, K. Smets, M. Mallaret, D. Di Bella, C. Gallenmüller, J. Baets, M. Schulze, S. Magri, E. Sarto, M. Mustafa, T. Deconinck, T. Haack, S. Züchner, M. Gonzalez, D. Timmann, C. Stendel, T. Klopstock, A. Durr, C. Tranchant, M. Sturm, W. Hamza, L. Nanetti, C. Mariotti, M. Koenig, L. Schöls, R. Schüle, P. de Jonghe, M. Anheim, F. Taroni and P. Bauer

1378

Neuregulin-1 controls an endogenous repair mechanism after spinal cord injury

K. Bartus, J. Galino, N. D. James, L. R. Hernandez-Miranda, J. M. Dawes, F. R. Fricker, A. N. Garratt, S. B. McMahon, M. S. Ramer, C. Birchmeier, D. L. H. Bennett and E. J. Bradbury

1394

The heat shock response plays an important role in TDP-43 clearance: evidence for dysfunction in amyotrophic lateral sclerosis

H.-J. Chen, J. C. Mitchell, S. Novoselov, J. Miller, A. L. Nishimura, E. L. Scotter, C. A. Vance, M. E. Cheetham and C. E. Shaw

1417

In situ expansion of T cells that recognize distinct self-antigens sustains autoimmunity in the CNS

A. Ramadan, L. E. Lucca, N. Carrié, S. Desbois, P.-P. Axisa, M. Hayder, J. Bauer, R. S. Liblau and L. T. Mars

1433

Glial and axonal changes in systemic lupus erythematosus measured with diffusion of intracellular metabolites

E. Ercan, C. Magro-Checa, R. Valabregue, F. Branzoli, E. T. Wood, G. M. Steup-Beekman, A. G. Webb, T. W. J. Huizinga, M. A. van Buchem and I. Ronen

1447

Corticosteroids compromise survival in glioblastoma

K. L. Pitter, I. Tamagno, K. Alikhanyan, A. Hosni-Ahmed, S. S. Pattwell, S. Donnola, C. Dai, T. Ozawa, M. Chang, T. A. Chan, K. Beal, A. J. Bishop, C. A. Barker, T. S. Jones, B. Hentschel, T. Gorlia, U. Schlegel, R. Stupp, M. Weller, E. C. Holland and D. Hambardzumyan

1458

Increased cortical grey matter lesion detection in multiple sclerosis with 7 T MRI: a post-mortem verification study

I. D. Kilsdonk, L. E. Jonkman, R. Klaver, S. J. van Veluw, J. J. M. Zwanenburg, J. P. A. Kuijfer, P. J. W. Pouwels, J. W. R. Twisk, M. P. Wattjes, P. R. Luijten, F. Barkhof and J. J. G. Geurts

1472

Deep brain stimulation modulates synchrony within spatially and spectrally distinct resting state networks in Parkinson's disease

A. Oswal, M. Beudel, L. Zrinzo, P. Limousin, M. Hariz, T. Foltynie, V. Litvak and P. Brown

1482

Brain activity underlying tool-related and imitative skills after major left hemisphere stroke

M. Martin, K. Nitschke, L. Beume, A. Dressing, L. E. Bühler, V. M. Ludwig, I. Mader, M. Rijntjes, C. P. Kaller and C. Weiller

1497

Surface errors without semantic impairment in acquired dyslexia: a voxel-based lesion-symptom mapping study

J. R. Binder, S. B. Pillay, C. J. Humphries, W. L. Gross, W. W. Graves and D. S. Book

1517

Network-selective vulnerability of the human cerebellum to Alzheimer's disease and frontotemporal dementia

C. C. Guo, R. Tan, J. R. Hodges, X. Hu, S. Sami and M. Hornberger

1527

Regional profiles of the candidate tau PET ligand ¹⁸F-AV-1451 recapitulate key features of Braak histopathological stages

A. J. Schwarz, P. Yu, B. B. Miller, S. Shcherbinin, J. Dickson, M. Navitsky, A. D. Joshi, M. D. Devous Sr and M. S. Mintun

1539

Tau PET patterns mirror clinical and neuroanatomical variability in Alzheimer's disease

R. Ossenkoppele, D. R. Schonhaut, M. Schöll, S. N. Lockhart, N. Ayakta, S. L. Baker, J. P. O'Neill, M. Janabi, A. Lazaris, A. Cantwell, J. Vogel, M. Santos, Z. A. Miller, B. M. Bettcher, K. A. Vossel, J. H. Kramer, M. L. Gorno-Tempini, B. L. Miller, W. J. Jagust and G. D. Rabinovici

1551

Rifampicin is a candidate preventive medicine against amyloid- β and tau oligomers

T. Umeda, K. Ono, A. Sakai, M. Yamashita, M. Mizuguchi, W. L. Klein, M. Yamada, H. Mori and T. Tomiyama

1568

A subcutaneous cellular implant for passive immunization against amyloid- β reduces brain amyloid and tau pathologies

A. Lathuilière, V. Laversenne, A. Astolfo, E. Kopetzki, H. Jacobsen, M. Stampanoni, B. Bohrmann, B. L. Schneider and P. Aebischer

1587

Seasonal difference in brain serotonin transporter binding predicts symptom severity in patients with seasonal affective disorder

B. Mc Mahon, S. B. Andersen, M. K. Madsen, L. V. Hjordt, I. Hageman, H. Dam, C. Svarer, S. da Cunha-Bang, W. Baaré, J. Madsen, L. Hasholt, K. Holst, V. G. Frokjaer and G. M. Knudsen

1605

Dorsal column

From the Archives

Acute poliomyelitis. By **F. E. Batten MD Cantab FRCP Lond.** The Lumleian Lectures for 1916 delivered before the Royal College of Physicians. *Brain* 1916; 39: 115-211

A. Compston
1615

Letter to the Editor

NEK1 mutations in familial amyotrophic lateral sclerosis

D. Brenner, K. Müller, T. Wieland, P. Weydt, S. Böhm, D. Lulé, A. Hübers, C. Neuwirth, M. Weber, G. Borck, M. Wahlqvist, K. M. Danzer, A. E. Volk, T. Meitinger, T. M. Strom, M. Otto, J. Kassubek, A. C. Ludolph, P. M. Andersen and J. H. Weishaupt

e28

Corrigendum

e29

