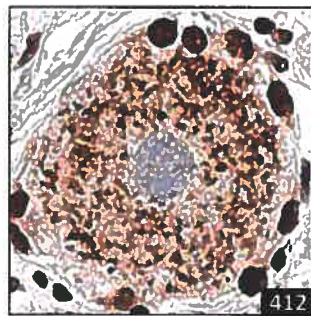
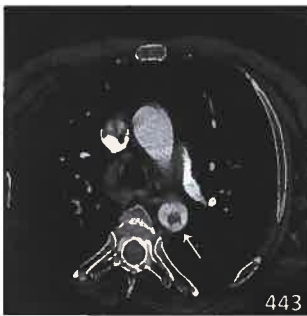


4	The attacks involve loss of awareness or the ability to react to things
2	Attacks come on out of the blue without warning
5	The attacks involve a complete loss of consciousness or blackout
21	The attacks often cause falls
6	The attacks involve loss of speech
30	I immediately recognize things after the attacks
7	The loss of awareness, consciousness or loss of speech lasts over one minute
29	The attacks are followed by confusion lasting more than one minute
11	The eyes are mostly open during the attack
27	The skin or lips looked pale during the attack
16	The attacks involve brief jerking of the limbs
19	During the attack, arms and legs are limp
1	The attacks are associated with emotional stress
3	There are triggers for the attacks
8	The attacks involve chewing, smacking or licking movements of the mouth and lips
15	The attacks involve trembling
20	During the attack, arms and legs are rigid
22	Shaking of the arms and legs goes on for more than one minute
9	The attacks involve fiddling, picking or fumbling movements of the hand
13	The mouth is tightly shut during the attack
17	The attacks involve violent shaking of arms and legs
12	In the attacks, the head moves rapidly from side to side
18	The attacks involve arching of the back and neck
25	The head turns to one side in the attacks
10	The attacks involve scratching or bicycling movements of the legs
24	The attacks look a bit like normal sleep
28	The skin or lips looked blue in the attack
26	The attacks involve movement into unusual positions
23	The attacks involve frothing from the mouth
14	The attacks involve crying or weeping

406



Select figures listed on the Table of Contents only appear within the full-length articles online.

In Focus

- 399 **Spotlight on the February 26 issue**
- 400 **This Week's Neurology® Podcast**

Editorials

- 401 **Strategies to improve uniformity in brain death determination**
J.L. Bernat and J.C.M. Brust
- 403 **The yin and yang of magnesium and calcium: New genetic insights for stroke?**
C.D. Anderson and J. Rosand

➔ Ahead of Print Articles and Editorials

NPub.org/aheadofprint

Articles: Short Format

Full articles at Neurology.org/N

- 405 **Variability in reported physician practices for brain death determination**
S.A. Braksick, C.P. Robinson, G.S. Gronseth, S. Hocker, E.F.M. Wijdicks, and A.A. Rabinstein
➔ Editorial, p. 401
- 406 **Value of witness observations in the differential diagnosis of transient loss of consciousness**
M. Chen, J. Jamnadas-Khoda, M. Broadhurst, M. Wall, R. Grünwald, S.J.L. Howell, M. Koepp, S.W. Parry, S.M. Sisodiya, M. Walker, D. Hesdorffer, and M. Reuber
➔ CME Course
- 407 **Effect of aerobic exercise on cognition in younger adults: A randomized clinical trial**
Y. Stern, A. MacKay-Brandt, S. Lee, P. McKinley, K. McIntyre, Q. Razlighi, E. Agarunov, M. Bartels, and R.P. Sloan
➔ CME Course ➔ Class of Evidence ➔ Patient Page
- 408 **Neuroimaging findings in midlife and risk of late-life dementia over 20 years of follow-up**
N.A. West, B.G. Windham, D.S. Knopman, D.K. Shibata, L.H. Coker, and T.H. Mosley, Jr.
- 409 **Associations of echocardiographic features with stroke in those without atrial fibrillation**
M.C. Johansen, M. Lin, S. Nazarian, and R.F. Gottesman
- 410 **Histopathology of diffusion imaging abnormalities in cerebral amyloid angiopathy**
S.J. van Veluw, Y.D. Reijmer, A.J. van der Kouwe, A. Charidimou, G.A. Riley, A. Leemans, B.J. Bacskaï, M.P. Frosch, A. Viswanathan, and S.M. Greenberg
- 411 **Serum magnesium and calcium levels in relation to ischemic stroke: Mendelian randomization study**
S.C. Larsson, M. Traylor, S. Burgess, G.B. Boncoraglio, C. Jern, K. Michaëlsson, and H.S. Markus, for the MEGASTROKE project of the International Stroke Genetics Consortium
➔ Editorial, p. 403 Open Access Article
- 412 **TDP43 pathology in the brain, spinal cord, and dorsal root ganglia of a patient with FOSMN**
A.M. Rossor, Z. Jaunmuktane, M.N. Rossor, G. Hoti, and M.M. Reilly
Open Access Article
- 413 **Effects of weakness of orofacial muscles on swallowing and communication in FSHD**
K. Mul, K.N. Berggren, M.Y. Sills, A. McCalley, B.G.M. van Engelen, N.E. Johnson, and J.M. Statland
- 414 **Autoimmune encephalitis: A costly condition**
J. Cohen, J. Sotoca, S. Gandhi, A.K. Yeshokumar, E. Gordon-Lipkin, R.G. Geocadin, K.D. Frick, J.C. Probasco, and A. Venkatesan

Continued

415 **Claims data analyses unable to properly characterize the value of neurologists in epilepsy care**

C.E. Hill, C.C. Lin, J.F. Burke, K.A. Kerber, L.E. Skolarus, G.J. Esper, B. Magliocco, and B.C. Callaghan

416 **Association between white matter hyperintensities, cortical volumes, and late-onset epilepsy**

E.L. Johnson, G.L. Krauss, A.K. Lee, A.L.C. Schneider, A.M. Kucharska-Newton, J. Huang, C.R. Jack, Jr., and R.F. Gottesman

What's Happening

417 **What's happening in *Neurology*[®] *Neuroimmunology* & *Neuroinflammation***

AAN Special Article

418 **Quality improvement in neurology: Universal neurology quality measurement set: Executive summary**

J. Martello, J. Buchhalter, R.R. Das, R. Dubinsky, E. Lee, and W. Anderson

🎧 Podcast

Contemporary Issues

427 **Meeting Medicare requirements for transitional care: Do stroke care and policy align?**

J.P. Bettger, S.B. Jones, A.M. Kucharska-Newton, J.K. Freburger, S.W. Coleman, L.H. Mettam, M.E. Sissine, S.B. Gesell, C.D. Bushnell, P.W. Duncan, and W.D. Rosamond

Clinical/Scientific Notes

435 **Late-onset neutropenia following ocrelizumab therapy for multiple sclerosis**

B.A. Cohen

Reflections: Neurology and the Humanities

437 **Mind's autumn**

A.M. Southerland

🎧 Audio

NeuroImages

438 **Diagnostic challenge: A case of late-onset spinal form cerebrotendinous xanthomatosis**

D. Mutlu, A. Tuncer, R. Gocmen, G. Yalcin-Cakmakli, S. Saygi, and B. Ellibol

Resident & Fellow Section

440 **Resident & Fellow Rounds**

J.J. Millichap and R.E. Stroud III

443 **Pearls & Oysters: Giant descending aortic arch donut sign: Retrograde embolism as a cause of acute ischemic stroke**

V. Choi, D.D. Kim, S. Fridman, Q. Zhang, M. Boulton, and LA. Sposato

e996 **Clinical Reasoning: A pregnant woman with chin numbness**

A.J. Arnold, G.S. Gilmour, and M.W. Koch

e1000 **Teaching NeuroImages: Transient mutism associated with splenium lesion in capecitabine-induced leukoencephalopathy**

T. Nicoletti, G. Spagni, M. Luigetti, and R. Iorio

e1002 **Teaching Video NeuroImages: Mirror therapy against phantom pain**

F.A. Steenwinkel, B.C. ter Meulen, and V.S. Ramachandran

🎥 Video

Patient Page

e1003 **Exercise: Can this help to improve or preserve cognitive function throughout adulthood?**

J. Doria and S. Karceski

Disputes & Debates: Editors' Choice

446 **Editors' note: Evaluating depression and suicidality in tetrabenazine users with Huntington disease**

J.E. Siegler III and S. Galetta

446 **Reader response: Evaluating depression and suicidality in tetrabenazine users with Huntington disease**

N.A. Aziz

447 **Author response: Evaluating depression and suicidality in tetrabenazine users with Huntington disease**

J.L. Schultz

447 **Reader response: Evaluating depression and suicidality in tetrabenazine users with Huntington disease**

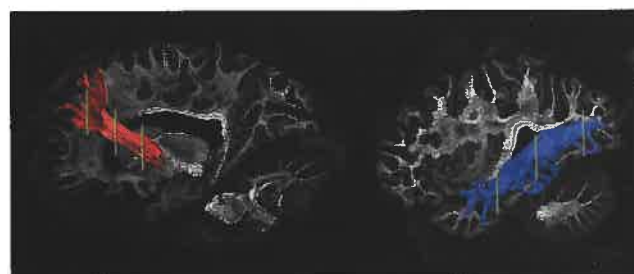
C. Sampaio, J.J. Ware, M. Macleod, E.-J. Wagenmakers, and M. Munafo

448 **Author response: Evaluating depression and suicidality in tetrabenazine users with Huntington disease**

J.L. Schultz, A. Killoran, P.C. Nopoulos, D.J. Moser, and J.A. Kamholz

Department

In the Next Issue of *Neurology*[®]



🎥 **Cover image**

Sagittal projections of the anterior thalamic radiation (left) and inferior longitudinal fasciculus (right), reconstructed with fiber tractography. See page 410