

Neurology[®]

Table of Contents

Volume 89, Number 24, December 12, 2017
Neurology.org

THE MOST WIDELY READ AND HIGHLY CITED PEER-REVIEWED
NEUROLOGY JOURNAL



IN FOCUS

- 2401 Spotlight on the December 12 issue
2412 This Week's *Neurology*[®] Podcast

EDITORIALS

- 2402 Preventing cognitive decline in sickle cell disease:
A good night's sleep
C.M. Amlie-Lefond and S.G. Pavlakis
- 2404 OCT as a window to the MS brain: The view becomes
slightly clearer
A.T. Toosy, R.T. Naismith, and P. Villoslada

ARTICLES

- 2406 Nocturnal oxyhemoglobin desaturation and
arteriopathy in a pediatric sickle cell disease cohort
*N. Dlamini, D.E. Saunders, M. Bynevelt, S. Trompeter,
T.C. Cox, R.S. Bucks, and F.J. Kirkham*
OPEN Editorial, p. 2402

- 2413 Virtual Reality Training for Upper Extremity in
Subacute Stroke (VIRTUES): A multicenter RCT
*I. Brunner, J.S. Skouen, H. Hofstad, J. Aßmus, F. Becker,
A.-M. Sanders, H. Pallesen, L. Qvist Kristensen,
M. Michielsen, L. Thijs, and G. Verheyden*
▲

- 2422 Barriers and facilitators to provide quality TIA care in
the Veterans Healthcare Administration
*T.M. Damush, E.J. Miech, J.J. Sico, M.S. Phipps,
G. Arling, J. Ferguson, C. Austin, L. Myers, F. Baye,
C. Luckhurst, A.B. Keating, E. Moran, and D.M. Bravata*
OPEN

- 2431 Shortage of generic neurologic therapeutics:
An escalating threat to patient care
*J.O. Omorodion, R.M. Algahtani, M.S. Zocchi, E.R. Fox,
J.M. Pines, and H.J. Kaminski*

- 2438 Increased florbetapir binding in the temporal
neocortex from age 20 to 60 years
*J. Gonneaud, E.M. Arenaza-Urquijo, F. Mézenge,
B. Landeau, M. Gaubert, A. Bejanin, R. de Flores,
M. Wirth, C. Tomadesso, G. Poisnel, A. Abbas,
B. Desgranges, and G. Chételat*

- 2447 Blood pressure from mid- to late life and risk of
incident dementia
*E.R. McGrath, A.S. Beiser, C. DeCarli, K.L. Plourde,
R.S. Vasan, S.M. Greenberg, and S. Seshadri*
- 2455 Comorbidity increases the risk of relapse in multiple
sclerosis: A prospective study
*K. Kowalec, K.A. McKay, S.B. Patten, J.D. Fisk,
C. Evans, H. Tremlett, and R.A. Marrie,
for the CIHR Team in Epidemiology and Impact of
Comorbidity on Multiple Sclerosis (ECoMS)*
OPEN
- 2462 Epilepsy in multiple sclerosis: A nationwide
population-based register study
J. Burman and J. Zelano
OPEN
- 2469 No evidence of disease activity is associated with
reduced rate of axonal retinal atrophy in MS
*M. Pisa, S. Guerrieri, G. Di Maggio, S. Medaglini,
L. Moiola, V. Martinelli, G. Corni, and L. Leocani*
Editorial, p. 2404
- 2476 Impaired vestibular responses in internuclear
ophthalmoplegia: Association and dissociation
S.-Y. Choi, H.-J. Kim, and J.-S. Kim
- 2481 Nonalcoholic fatty liver disease in spinal and bulbar
muscular atrophy
*R.D. Guber, V. Takyar, A. Kokkinis, D.A. Fox, H. Alao, I. Kats,
D. Bakar, A.T. Remaley, S.M. Hewitt, D.E. Kleiner, C.-Y. Liu,
C. Hadigan, K.H. Fischbeck, Y. Rotman, and C. Grunseich*
OPEN
- 2491 Muscle glycogen synthesis and breakdown are both
impaired in glycogenin-1 deficiency
*M.G. Stemmerik, K.L. Madsen, P. Laforêt,
A.E. Buch, and J. Vissing*
- 2495 Motor, cognitive, and functional declines contribute
to a single progressive factor in early HD
*S.A. Schobel, G. Palermo, P. Auinger, J.D. Long, S. Ma,
O.S. Khwaja, D. Trundell, M. Cudkowicz, S. Hersch,
C. Sampaio, E.R. Dorsey, B.R. Leavitt, K.D. Kieburz,
J.J. Sevigny, D.R. Langbehn, and S.J. Tabrizi,
for the TRACK-HD, COHORT, CARE-HD, and 2CARE
Huntington Study Group Investigators*

CONTINUED

Neurology®

Table of Contents

continued



CLINICAL/SCIENTIFIC NOTES

- 2503 Evidence of CNS β -amyloid deposition in Nasu-Hakola disease due to the *TREM2* Q33X mutation
L. Ghezzi, T. Carandini, A. Arighi, C. Fenoglio, M. Arcaro, M. De Riz, A.M. Pietroboni, G.G. Fumagalli, P. Basilico, A. Calvi, M. Scarioni, A. Colombi, M. Serpente, G. Marotta, R. Benti, E. Scarpini, and D. Galimberti

REFLECTIONS: NEUROLOGY AND THE HUMANITIES

- 2506 The rise (and fall?) of an unwelcome presence
M.S. Burnett

RESIDENT & FELLOW SECTION

- e276 Clinical Reasoning: Monocular vision loss, ophthalmoplegia, and strokes in a 61-year-old man with diabetes mellitus
G. Lamotte, Z. Farzal, W.D. Zimmerman, S. Han, P. de Brito, and D. Mayson

- e282 Opinion and Special Articles: Neurology education at US osteopathic medical schools
D.A. Freedman and D.V.F. Albert

- e284 Residency Training: The need for an integrated diversity curriculum for neurology residency
N. Rosendale and S.A. Josephson

- e288 Teaching *NeuroImages*: A protruding asymmetrical belly
C.S.M. Straathof and U.A. Badrising

- e290 Teaching Video *NeuroImages*: Trigeminal neuralgia due to compression by the superior cerebellar artery
J. Bakhsheshian, K. Goshtasbi, B.A. Strickland, and M.H. Pham

WRITECLICK® EDITOR'S CHOICE

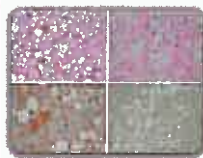
- 2508 Editors' Note
M. Alcauskas and S. Galetta
- 2508 Letter re: Hospital safety among neurologic patients: A population-based cohort study of adverse events
V. Giannouli
- 2508 Letter re: Hospital safety among neurologic patients: A population-based cohort study of adverse events
A. Ganesh
- 2509 Author response: Hospital safety among neurologic patients: A population-based cohort study of adverse events
N. Jette, K.M. Sauro, H. Quan, K.C. Sikdar, and P. Faris

DEPARTMENT

In the Next Issue of *Neurology*®

Podcast at Neurology.org CME Video Patient Page LOE classification LOE recommendation

Find us on Facebook www.facebook.com/Neurology [tinyurl.com/neurologyfan](https://t.me/Neurologyfan) twitter twitter.com/GreenJournal



Cover Image: Histologic features of nonalcoholic fatty liver disease in liver samples from patients with spinal and bulbar muscular atrophy. See page 2481.

Look for Publish Ahead of Print articles and editorials under the Ahead of Print tab at Neurology.org