

Neurology®

Table of Contents

Volume 89, Number 17, October 24, 2017

Neurology.org

THE MOST WIDELY READ AND HIGHLY CITED PEER-REVIEWED
NEUROLOGY JOURNAL



IN FOCUS

1757 Spotlight on the October 24 issue

1781 This Week's Neurology® Podcast

EDITORIALS

1758 Deciphering neurodegeneration: A paradigm shift from focality to connectivity
P. Bede

1760 Can lifestyle modification slow progression of Parkinson disease?
P. Hedera and T.L. Davis

1762 Virtually reducing fall risk in Parkinson disease
C. Moreau, B.R. Barton, and D. Devos

ARTICLES

1764 Brain network connectivity differs in early-onset neurodegenerative dementia
M. Filippi, S. Basaia, E. Canu, F. Imperiale, A. Meani, F. Caso, G. Magnani, M. Falautano, G. Comi, A. Falini, and F. Agosta
 Editorial, p. 1758

1773 Mixed neuropathologies and associations with domain-specific cognitive decline
W.D. Brenowitz, R.A. Hubbard, C.D. Keene, S.E. Hawes, W.T. Longstreth, Jr., R.L. Woltjer, and W.A. Kukull

1782 Neurogranin, a synaptic protein, is associated with memory independent of Alzheimer biomarkers
K.B. Casaletto, F.M. Elahi, B.M. Bettcher, J. Neuhaus, B.B. Bendlin, S. Asthana, S.C. Johnson, K. Yaffe, C. Carlsson, K. Blennow, H. Zetterberg, and J.H. Kramer

1789 Association of metabolic syndrome and change in Unified Parkinson's Disease Rating Scale scores
M. Leehey, S. Luo, S. Sharma, A.-M.A. Wills, J.L. Bainbridge, P.S. Wong, D.K. Simon, J. Schneider, Y. Zhang, A. Pérez, R. Dhall, C.W. Christine, C. Singer, F. Cambi, and J.T. Boyd
Editorial, p. 1760

1795 Caffeine as symptomatic treatment for Parkinson disease (Café-PD): A randomized trial
R.B. Postuma, J. Anang, A. Pelletier, L. Joseph, M. Moscovich, D. Grimes, S. Furtado, R.P. Munhoz, S. Appel-Cresswell, A. Moro, A. Borys, D. Hobson, and A.E. Lang

1802 Comment: Caffeine and PD—Time to consider other interventions
C.B. Hall

1804 Disparate effects of training on brain activation in Parkinson disease
I. Maidan, K. Rosenberg-Katz, Y. Jacob, N. Giladi, J.M. Hausdorff, and A. Mirelman
Editorial, p. 1762

1811 A phase 3 randomized placebo-controlled trial of tadalafil for Duchenne muscular dystrophy
R.G. Victor, H.L. Sweeney, R. Finkel, C.M. McDonald, B. Byrne, M. Eagle, N. Goemans, K. Vandendorpe, A.L. Dubrovsky, H. Topaloglu, M.C. Miceli, P. Furlong, J. Landry, R. Elashoff, and D. Cox, for the Tadalafil DMD Study Group

1821 UFM1 founder mutation in the Roma population causes recessive variant of H-ABC
E.M.C. Hamilton, E. Bertini, L. Kalaydjieva, B. Morar, D. Dojčáková, J. Liu, A. Vanderver, J. Curjel, C.M. Persoon, D. Diodato, L. Pinelli, N.L. van der Meij, B. Plecko, S. Blaser, N.I. Wolf, Q. Waisfisz, T.E.M. Abbink, and M.S. van der Knaap, on behalf of the Recessive H-ABC Research Group

1829 COL4A2 is associated with lacunar ischemic stroke and deep ICH: Meta-analyses among 21,500 cases and 40,600 controls
K. Rannikmäe, V. Sivakumaran, H. Millar, R. Malik, C.D. Anderson, M. Chong, T. Dave, G.J. Falcone, I. Fernandez-Cadenas, J. Jimenez-Conde, A. Lindgren, J. Montaner, M. O'Donnell, G. Paré, F. Radmanesh, N.S. Rost, A. Slowik, M. Söderholm, M. Traylor, S.L. Pulit, S. Seshadri, B.B. Worrall, D. Woo, H.S. Markus, B.D. Mitchell, M. Dichgans, J. Rosand, and C.L.M. Sudlow, on behalf of the Stroke Genetics Network (SiGN), METASTROKE Collaboration, and International Stroke Genetics Consortium (ISGC)

CONTINUED

Neurology®

Table of Contents

continued



NEUROIMAGES

- 1840 Pilocytic astrocytoma with anaplasia arising from the optic chiasm in a very elderly patient
S. Hayashi, N. Akao, Y. Nakazato, and K. Okamoto

VIDEO NEUROIMAGES

- 1841 Head flutter
J. Lemos, C. Duque, R. Araújo, J. Castelhana, E. Eggenberger, and C. Nunes



REFLECTIONS: NEUROLOGY AND THE HUMANITIES

- e204 Senses
Y. Aghajan

RESIDENT & FELLOW SECTION

- e205 Clinical Reasoning: A common cause for Phelan-McDermid syndrome and neurofibromatosis type 2: One ring to bind them
A.M. Lyons-Warren, S.W. Cheung, and J.L. Holder, Jr.
- e210 Pearls & Oysters: CNS lymphoma in a patient with relapsing-remitting multiple sclerosis treated with interferon
S. Chiang, N.K. Kesari, A. Bradshaw, W. Chen, R. Samudralwar, A.M. Alobaidy, and J.S. Kass
- e214 Teaching NeuroImages: Hypoglossal nerve palsy due to basilar invagination
J. Bakhsheshian, K. Goshtasbi, J. Acharya, I.A. Buchanan, V. Fredrickson, and P. Reid

- e216 Teaching NeuroImages: New-onset focal epilepsy: The curious case of the camel and the jawbone
J.D. Triplett, N. Lawn, and R. Edis

WRITECLICK® EDITOR'S CHOICE

- 1842 Editors' Note
C. Karam and S. Galetta
- 1842 Letter re: Alterations of functional connectivity of the motor cortex in Fabry disease: An RS-fMRI study
G. Sechi, R. Demurtas, W. Boadu, and E. Ortu
- 1842 Author response: Alterations of functional connectivity of the motor cortex in Fabry disease: An RS-fMRI study
S. Cocozza, A. Pisani, A. Brunetti, M. Quarantelli, and E. Tedeschi
- 1843 Letter re: Teaching NeuroImages: Acute Parinaud syndrome
K. Vanikieti, M. Bouffard, A. Gilbert, and J. Rizzo
- 1843 Author response: Teaching NeuroImages: Acute Parinaud syndrome
E. Swinkin and E. Bui

CORRECTION

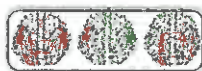
- 1844 Genetics, white matter, and cognition: The effects of methylation on *FMR1*

DEPARTMENT

In the Next Issue of *Neurology*®

Podcast at Neurology.org CME Video Patient Page LOE classification LOE recommendation

[Find us on Facebook](https://www.facebook.com/Neurology) tinyurl.com/neurologyfan twitter.com/GreenJournal



Cover image: Affected functional connections in patients with early-onset Alzheimer disease and behavioral variant frontotemporal dementia relative to healthy controls and each other. See page 1764.

Look for **Publish Ahead of Print** articles and editorials under the Ahead of Print tab at Neurology.org