

Neurology[®]

Table of Contents

Volume 86, Number 15, April 12, 2016
Neurology.org

THE MOST WIDELY READ AND HIGHLY CITED PEER-REVIEWED
NEUROLOGY JOURNAL



IN FOCUS

- 1363 Spotlight on the April 12 Issue
1376 This Week's *Neurology*[®] Podcast

EDITORIALS

- 1364 Sex differences in cognition: Does the "fairer sex" need a fairer test?
M. Sano and S. Gandy
- 1366 A newly approved drug for a rare group of diseases: Dichlorphenamide for periodic paralysis
B. Fontaine and L.H. Phillips II

ARTICLES

- 1368 Better verbal memory in women than men in MCI despite similar levels of hippocampal atrophy
E.E. Sundermann, A. Biegon, L.H. Rubin, R.B. Lipton, W. Mowrey, S. Landau, and P.M. Maki, for the Alzheimer's Disease Neuroimaging Initiative
Editorial, p. 1364
- 1377 Amyloid negativity in patients with clinically diagnosed Alzheimer disease and MCI
S.M. Landau, A. Horng, A. Fero, and W.J. Jagust, for the Alzheimer's Disease Neuroimaging Initiative
- 1386 Occupational cognitive requirements and late-life cognitive aging
L.R. Pool, J. Weuve, R.S. Wilson, U. Bültmann, D.A. Evans, and C.F. Mendes de Leon
OPEN
- 1393 Frontotemporal networks and behavioral symptoms in primary progressive aphasia
L. D'Anna, M.M. Mesulam, M. Thiebaut de Schotten, F. Dell'Acqua, D. Murphy, C. Wieneke, A. Martersteck, D. Cobia, E. Rogalski, and M. Catani
OPEN
- 1400 Age at onset and Parkinson disease phenotype
G. Pagano, N. Ferrara, D.J. Brooks, and N. Pavese
- 1406 Comment: Biomarkers for the progression of Parkinson disease
P.A. Kempster

- 1408 Randomized, placebo-controlled trials of dichlorphenamide in periodic paralysis
V.A. Sansone, J. Burge, M.P. McDermott, P.C. Smith, B. Herr, R. Tawil, S. Pandya, J. Kissel, E. Ciafaloni, P. Shieh, J.W. Ralph, A. Amato, S.C. Cannon, J. Trivedi, R. Barohn, B. Crum, H. Mitsumoto, A. Pestronk, G. Meola, R. Conwit, M.G. Hanna, and R.C. Griggs, for the Muscle Study Group
OPEN **▲ Editorial, p. 1366**

- 1417 Health-related quality of life in multiple sclerosis: Direct and indirect effects of comorbidity
L.I. Berrigan, J.D. Fisk, S.B. Patten, H. Tremlett, C. Wolfson, S. Warren, K.M. Fiest, K.A. McKay, and R.A. Marrie, for the CIHR Team in the Epidemiology and Impact of Comorbidity on Multiple Sclerosis (ECoMS)
- 1425 Neuroinflammation in treated HIV-positive individuals: A TSP0 PET study
J.H. Vera, Q. Guo, J.H. Cole, A. Boasso, L. Greathead, P. Kelleher, E.A. Rabiner, N. Kalk, C. Bishop, R.N. Gunn, P.M. Matthews, and A. Winston
OPEN

HISTORICAL NEUROLOGY

- 1433 "Dark Victory" (prognosis negative): The beginnings of neurology on screen
E.F.M. Wijdicks

VIEWS & REVIEWS

- 1437 The challenge of comorbidity in clinical trials for multiple sclerosis
R.A. Marrie, A. Miller, M.P. Sormani, A. Thompson, E. Waubant, M. Trojano, P. O'Connor, S. Reingold, and J.A. Cohen, for the attendees of the International Workshop on Comorbidity in Multiple Sclerosis
OPEN **See p. 1446**
- 1446 Recommendations for observational studies of comorbidity in multiple sclerosis
R.A. Marrie, A. Miller, M.P. Sormani, A. Thompson, E. Waubant, M. Trojano, P. O'Connor, K. Fiest, N. Reider, S. Reingold, and J.A. Cohen, for the attendees of the International Workshop on Comorbidity in Multiple Sclerosis
OPEN **See p. 1437**

CONTINUED

Neurology®

Table of Contents

continued



CLINICAL/SCIENTIFIC NOTES

- 1454 Bilateral sequential peripheral vestibulopathy
A.S. Young, R.L. Taylor, L.A. McGarvie, G.M. Halmagyi, and M.S. Welgampola
- 1456 Monozygotic twins with de novo ZIC2 gene mutations discordant for the type of holoprosencephaly
J. Nakayama, H. Kinugasa, T. Ohto, R. Tanaka, T. Nakayama, E. Noguchi, T. Arinami, and N. Iwasaki

REFLECTIONS: NEUROLOGY AND THE HUMANITIES

- 1459 No man's land
P. Rousseau

NEUROIMAGES

- 1461 Anti-Ma2-associated encephalitis in a patient with testis carcinoma
S.R. Suwijn, L.P. Klieverik, and V.J.J. Odekerken

VIDEO NEUROIMAGES

- 1462 Flamenco dancer posture: Unique "off" complication in Parkinson disease
L.C. Lovera, F. Rodriguez-Porcel, E. Urrea-Mendoza, A. Fasano, and A.J. Espay



RESIDENT & FELLOW SECTION

- e156 Clinical Reasoning: A 76-year-old man with acute-onset left-sided weakness and numbness
W. Renthal, M. Alberts, and T. Shang

- e161 Clinical Reasoning: Left hemiparesis, ataxia, and optic neuritis in a child previously treated for pineoblastoma
S. Vila-Bedmar, B. Nourbakhsh, S. Anzalone, and E. Waubant

- e166 Teaching NeuroImages: When alopecia and disk herniations meet vascular leukoencephalopathy: CARASIL
B. Roeben, S. Uhrig, B. Bender, and M. Synofzik

WRITECLICK® EDITOR'S CHOICE

- 1464 Teaching NeuroImages: Hypometabolism of the primary motor cortex in primary lateral sclerosis: The stripe sign
M. Turner; Author Response: J. Cosgrove, S. Jamieson, F.U. Chowdhury

- 1464 Diffuse leukoencephalopathy with spheroids presenting as primary progressive aphasia
S. Lapalme-Remis, J. Warman Chardon, P.R. Bourque; Author Response: C. Oboudiyat

CORRECTION

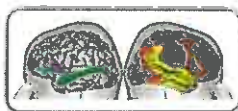
- 1465 Quality improvement in neurology: Multiple sclerosis quality measures: Executive summary

DEPARTMENT

In the Next Issue of *Neurology*®

Podcast at Neurology.org CME Video Patient Page LOE classification LOE recommendation

Find us on Facebook tinyurl.com/neurologyfan twitter twitter.com/GreenJournal



Cover image: Networks and cortical atrophy in primary progressive aphasia (figures 1 and 2). See page 1393.

Look for Publish Ahead of Print articles and editorials under the Ahead of Print tab at Neurology.org
