

# Neurology®

## Table of Contents

Volume 87, Number 11, September 13, 2016

Neurology.org

THE MOST WIDELY READ AND HIGHLY CITED PEER-REVIEWED  
NEUROLOGY JOURNAL



### IN FOCUS

1067 Spotlight on the September 13 Issue

1117 This Week's Neurology® Podcast

### EDITORIALS

1068 CSF neurofilament light: A universal risk biomarker in multiple sclerosis?

*M. Khalil and J. Salzer*

1070 Subarachnoid hemorrhage: Another reason not to smoke

*M.S. Sandvei and S. Sen*

1072 ALS and physician-assisted suicide

*J. Katz and H. Mitsumoto*

### IN MEMORIAM

1074 Frederick George Flynn, DO, FAAN (1948–2015)

*A. DePold Hohler and J.D. Lee*

### ARTICLES

1076 Neurofilament light chain level is a weak risk factor for the development of MS

*G. Arrambide, C. Espejo, H. Eixarch, L.M. Villar, J.C. Alvarez-Cermeño, C. Picón, J. Kuhle, G. Disanto, L. Kappos, J. Sastre-Garriga, D. Pareto, E. Simon, M. Comabella, J. Río, C. Nos, C. Tur, J. Castelló, A. Vidal-Jordana, I. Galán, M.J. Arévalo, C. Auger, A. Rovira, X. Montalban, and M. Tintore*

**OPEN** Editorial, p. 1068

1085 Task-dependent deterioration of balance underpinning cognitive-postural interference in MS

*L. Prosperini, L. Castelli, F. De Luca, F. Fabiano, I. Ferrante, and L. De Giglio*

1090 Comment: Dual tasks as a sensitive measure of cognitive deficits in MS

*N. Muhlert*

1093 Predicting Alzheimer disease from a blood-based biomarker profile: A 54-month follow-up

*S.C. Burnham, C.C. Rowe, D. Baker, A.I. Bush, J.D. Doecke, N.G. Faux, S.M. Laws, R.N. Martins, P. Maruff, S.L. Macaulay, S. Rainey-Smith, G. Savage, D. Ames, C.L. Masters, W. Wilson, and V.L. Villemagne*



1102 Late-onset depressive symptoms increase the risk of dementia in small vessel disease

*I.W.M. van Uden, H.M. van der Holst, E.M.C. van Leijzen, A.M. Tuladhar, A.G.W. van Norden, K.F. de Laat, J.A.H.R. Claassen, E.J. van Dijk, R.P.C. Kessels, E. Richard, I. Tendolkar, and F.-E. de Leeuw*

1110 Cortical superficial siderosis: Prevalence and biomarker profile in a memory clinic population  
*S. Shams, J. Martola, A. Charidimou, L. Cavallin, T. Granberg, M. Shams, Y. Forslin, P. Aspelin, M. Kristoffersen-Wiberg, and L.-O. Wahlund*



1118 Incidence of subarachnoid hemorrhage is decreasing together with decreasing smoking rates

*M. Korja, H. Lehto, S. Juvola, and J. Kaprio*

Editorial, p. 1070

1124 Role of atherosclerosis, clot extent, and penumbra volume in headache during ischemic stroke

*H.J.A. van Os, I.A. Mulder, I.C. van der Schaaf, L.J. Kappelle, B.K. Velthuis, A. Braersen, J.A. Vos, G.M. Terwindt, W. Schonewille, M.D. Ferrari, A. Algra, M.A.A. van Walderveen, and M.J.H. Wermer*

1131 NALCN channelopathies: Distinguishing gain-of-function and loss-of-function mutations

*E.G. Bend, Y. Si, D.A. Stevenson, P. Bayrak-Toydemir, T.M. Newcomb, E.M. Jorgensen, and K.J. Swoboda*

**OPEN**

1138 Comment: Genotype-phenotype correlation with CRISPR-Cas9—Bedside to bench

*W.D. Arnold*

1140 Phenotypic spectrum of GABRA1: From generalized epilepsies to severe epileptic encephalopathies

*K. Johannesen, C. Marini, S. Pfeffer, R.S. Møller, T. Dorn, C. Niturad, E. Gardella, Y. Weber, M. Søndergård, H. Hjalgrim, M. Nikanorova, F. Becker, L.H.G. Larsen, H.A. Dahl, O. Maier, D. Mei, S. Biskup, K.M. Klein, P.S. Reif, F. Rosenow, A.F. Elias, C. Hudson, K.L. Helbig, S. Schubert-Bast, M.R. Scorda, D. Craiu, T. Djémié, D. Hoffman-Zacharska, H. Caglayan, I. Helbig, J. Serratosa, P. Striano, P. De Jonghe, S. Weckhuysen, A. Suls, K. Muru, I. Talvik, T. Talvik, H. Muhle, I. Borggraefe, I. Rost, R. Guerrini, H. Lerche, J.R. Lemke, G. Rubboli, and S. Maljevic*

1152 Physician-assisted death: A Canada-wide survey of ALS health care providers

*A. Abrahao, J. Downar, H. Pinto, N. Dupré, A. Izenberg, W. Kingston, L. Korngut, C. O'Connell, N. Petrescu, C. Shoesmith, A. Tandon, A.B. Vargas-Santos, and L. Zinman*

**OPEN** Editorial, p. 1072

1161 Lenalidomide long-term neurotoxicity: Clinical and neurophysiologic prospective study

*C. Dalla Torre, R. Zombello, M. Cacciavillani, M. Campagnolo, T. Berno, A. Salvalaggio, E. De March, G. Barilà, A. Lico, M. Lucchetta, M. Ermani, and C. Briani*

CONTINUED

# Neurology<sup>®</sup>

## Table of Contents

*continued*



### HISTORICAL NEUROLOGY

- 1167 W. Ritchie Russell, A.B. Baker, and Fred Plum: Pioneers of ventilatory management in poliomyelitis  
*E.F.M. Wijdicks*

### VIEWS & REVIEWS

- 1171 Zoonotic bacterial meningitis in human adults  
*A. van Samkar, M.C. Brouwer, A. van der Ende, and D. van de Beek*

### CLINICAL/SCIENTIFIC NOTES

- 1180 Primary marginal zone lymphoma of the CNS presenting as a diffuse leptomeningeal process  
*D.M. Gazzola, A.A. Arbini, K. Haglof, and S.V. Pacia*

### REFLECTIONS, NEUROLOGY AND THE HUMANITIES

- 1183 On family meetings  
*D.Y. Chung*

### NEUROIMAGES

- 1184 Arteriovenous fistula mimicking vestibular schwannoma  
*M.N. Woodall and S.Y. Rahimi*

### VIDEO NEUROIMAGES

- 1185 Cough tremor as presenting symptom of intraventricular tumor  
*M.R. Mazza, M. Morelli, M. Gangemi, G. Ferrigno, B. Vescio, L.M. Cavallo, A. Quattrone, and F. Bono*



### RESIDENT & FELLOW SECTION

- e110 Clinical Reasoning: A 57-year-old man with subacute gait difficulty and hand tremor  
*V.K. Paliwal, R. Uniyal, Z. Neyaz, and V. Agarwal*
- e114 Teaching NeuroImages: The half-split man  
*M. Takahashi, A. Shinya, H. Kitazono, T. Sekiguchi, A. Inaba, and S. Orimo*
- e116 Teaching NeuroImages: An extremely rare cause of treatable acute encephalopathy  
*P.V. Sgobbi de Souza, T. Bortholin, W.B. Vieira de Rezende Pinto, and A.S. Bulle Oliveira*
- e117 Teaching Video NeuroImages: Bilateral complete horizontal gaze palsy with preserved convergence: The 1 + 1 syndrome  
*D. Biotti and C. Tilikete*



### WRITECLICK<sup>®</sup> EDITOR'S CHOICE

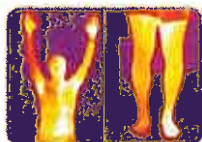
- 1187 Orthostatic myoclonus associated with Caspr2 antibodies  
*J.A. van Gerpen, J.E. Ahlskog, R. Chen, V.S.C. Fung, M. Hallett; Author Response: F. Gövert, G. Deuschl, F. Leypoldt*
- 1188 Antibiotic-associated encephalopathy  
*E. Stip; Author Response: R.R. Darby, S. Bhattacharyya, A.L. Berkowitz*

### DEPARTMENT

In the Next Issue of *Neurology*<sup>®</sup>

Podcast at [Neurology.org](http://Neurology.org) CME Video Patient Page LOE classification LOE recommendation

[Facebook](https://www.facebook.com/Neurologyfan) [tinyurl.com/neurologyfan](http://tinyurl.com/neurologyfan) [twitter](https://twitter.com/Neurologyfan) [twitter.com/GreenJournal](https://twitter.com/GreenJournal)



**Cover image:** Thermography images of a man with left lateral medullary infarction show the bilateral discrepancy in body temperature, as though the patient were split down the middle of his body. See page e114.

Look for Publish Ahead of Print articles and editorials under the Ahead of Print tab at [Neurology.org](http://Neurology.org)