

Neurology[®]

Table of Contents

Volume 88, Number 10, March 7, 2017

Neurology.org

THE MOST WIDELY READ AND HIGHLY CITED PEER-REVIEWED
NEUROLOGY JOURNAL



IN FOCUS

- 921 Spotlight on the March 7 issue
960 This Week's *Neurology*[®] Podcast

EDITORIALS

- 922 Neurofilament light: A heavyweight diagnostic biomarker in neurodegenerative parkinsonism?
G. Alves and L. Bonanni
- 924 Language, meaning, and localization: Last year's words, next year's words
A. Brodtmann and A.P. Vogel
- 926 Early case fatality in intracerebral hemorrhage: Sophistication of care, application globally
A. Charidimou and D.L. Tirschwell

IN MEMORIAM

- 928 David A. Drachman, MD (1932–2016)
R.H. Brown, Jr. and W.J. Schwartz

ARTICLES

- 930 Blood-based NfL: A biomarker for differential diagnosis of parkinsonian disorder
O. Hansson, S. Janelidze, S. Hall, N. Magdalinou, A.J. Lees, U. Andreasson, N. Norgren, J. Linder, L. Forsgren, R. Constantinescu, H. Zetterberg, and K. Blennow, for the Swedish BioFINDER study
OPEN ▲ Editorial, p. 922
- 938 Phase I/II multicenter ketogenic diet study for adult superrefractory status epilepticus
M.C. Cervenka, S. Hocker, M. Koenig, B. Bar, B. Henry-Barron, E.H. Kossoff, A.L. Hartman, J.C. Probasco, D.R. Benavides, A. Venkatesan, E.C. Hagen, D. Dittrich, T. Stern, B. Radzik, M. Depew, F.M. Caserta, P. Nyquist, P.W. Kaplan, and R.G. Geocadin
▲
- 944 Variability of fasting plasma glucose increased risks of diabetic polyneuropathy in T2DM
C.-P. Yang, C.-I. Li, C.-S. Liu, W.-Y. Lin, K.-L. Hwang, S.-Y. Yang, T.-C. Li, and C.-C. Lin

- 952 Increased default-mode network centrality in cognitively impaired multiple sclerosis patients
A.J.C. Eijlers, K.A. Meijer, T.M. Wassenaar, M.D. Steenwijk, B.M.J. Uitdehaag, F. Barkhof, A.M. Wink, J.J.G. Geurts, and M.M. Schoonheim
- 961 Neurofilament as a blood marker for diagnosis and monitoring of primary progressive aphasia
P. Steinacker, E. Semler, S. Anderl-Straub, J. Diehl-Schmid, M.L. Schroeter, I. Uttner, H. Foerstl, B. Landwehrmeyer, C.A.F. von Arnim, J. Kassubek, P. Oeckl, H.-J. Huppertz, K. Fassbender, K. Fliessbach, J. Prudlo, C. Roßmeier, J. Kornhuber, A. Schneider, A.E. Volk, M. Lauer, A. Danek, A.C. Ludolph, and M. Otto, on behalf of the FTLDC Study Group
▲
- 970 Lesion localization of speech comprehension deficits in chronic aphasia
S.B. Pillay, J.R. Binder, C. Humphries, W.L. Gross, and D.S. Book
Editorial, p. 924
- 976 Early life risk factors for cerebrovascular disease: A systematic review and meta-analysis
E.V. Backhouse, C.A. McHutchison, V. Cvorc, S.D. Shenkin, and J.M. Wardlaw
- 985 Temporal trends in early case-fatality rates in patients with intracerebral hemorrhage
Y. Béjot, M. Grelat, B. Delpont, J. Durier, O. Rouaud, G.-V. Osseby, M. Hervieu-Bègue, M. Giroud, and C. Cordonnier
Editorial, p. 928

VIEWS & REVIEWS

- 991 Genetic testing in ALS: A survey of current practices
A. Vajda, R.L. McLaughlin, M. Heverin, O. Thorpe, S. Abrahams, A. Al-Chalabi, and O. Hardiman
OPEN

CLINICAL/SCIENTIFIC NOTES

- 1000 Munchausen syndrome by genetics: Next-generation challenges for clinicians
S. Zittel, K. Lohmann, P. Bauer, C. Klein, and A. Münchau

CONTINUED

Neurology[®]

Table of Contents

continued



1001 ¹¹C-PBR28 PET detects translocator protein in a patient with astrocytoma and Alzheimer disease
W.C. Kreisl, R. Lawrence, E. Page, A.F. Teich, D.S. Subramaniam, R.B. Innis, and R.S. Turner

1004 Tumefactive demyelination following treatment for relapsing multiple sclerosis with alemtuzumab
J. Barton, T.A. Hardy, S. Riminton, S.W. Reddel, Y. Barnett, A. Coles, and M.H. Barnett

RESIDENT & FELLOW SECTION

e78 Clinical Reasoning: A young woman with respiratory failure, hearing loss, and paraplegia
A. Ntranos, H. Shoirah, M.S. Dhamoon, D. Hahn, T.P. Naidich, and S. Shin

e85 Teaching *NeuroImages*: Sonographic detection of intraneural perineurioma in therapy-refractory carpal tunnel syndrome
C. Krogias, R. Gold, T. Schelle, J. Böhm, A. Junker, U. Sure, and A.-K. Uerschels

GLOBAL PERSPECTIVES

e87 Expanding medicines for neurologic disorders on the WHO Model List
K. Rimmer, H. Shah, and K. Thakur

WRITECLICK[®] EDITOR'S CHOICE

1007 Editors' Note
M. Alcauskas and R.C. Griggs

1007 Letter re: Primary marginal zone lymphoma of the CNS presenting as a diffuse leptomeningeal process
A. Kunchok, S. Larsen, and G.M. Halmagyi

1007 Author response: Primary marginal zone lymphoma of the CNS presenting as a diffuse leptomeningeal process
D.M. Gazzola, A.A. Arbini, K. Haglof, and S.V. Pacia

1008 Letter re: Sirolimus for epilepsy in children with tuberous sclerosis complex: A randomized controlled trial
L.-P. Zou and Y.-T. Liu

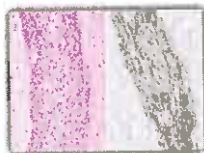
1008 Author response: Sirolimus for epilepsy in children with tuberous sclerosis complex: A randomized controlled trial
M.-C.Y. de Wit and I.E. Overwater

DEPARTMENT

In the Next Issue of *Neurology*[®]

Podcast at Neurology.org CME Video Patient Page LOE classification LOE recommendation

Facebook tinyurl.com/neurologyfan twitter twitter.com/GreenJournal



Cover image: Two modes of imaging used to diagnose intraneural perineurioma in therapy-refractory carpal tunnel syndrome: Intrafascicular tumor cells surrounded by collagen fibers and EMA-stained positive tumor cells. See page e85.

Look for **Publish Ahead of Print** articles and editorials under the Ahead of Print tab at Neurology.org
