



MAYO CLINIC PROCEEDINGS

www.mayoclinicproceedings.org



Table of Contents

August 2019 Volume 94 Number 8

The September online issue of *Proceedings* will be available by Monday, September 2.
Sign up for an alert to the online Table of Contents at www.mayoclinicproceedings.org

In The Limelight

- 1391 **In the Limelight: August 2019**
Karl A. Nath

Editorials

- 1395 **Knowing That Cardiorespiratory Fitness Should Be a Vital Sign Is Not Enough**
Robert Ross
- 1398 **Our Eating Disorders Blind Spot: Sex and Ethnic/Racial Disparities in Help-Seeking for Eating Disorders**
Leslie Sim
- 1401 **No Money, No Mission: Addressing Tensions Between Clinical Productivity and the Culture of Medicine**
Thomas J. Beckman

Medical Image

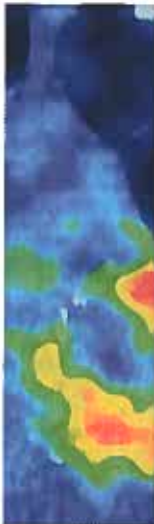
- 1404 **Shingles of the Wrist With a Bullous Evolution**
Kai-Ming Chang and Benjamin T. Galen






Original Articles

- 1406 **The Influence of Change in Cardiorespiratory Fitness With Short-Term Exercise Training on Mortality Risk From The Ball State Adult Fitness Longitudinal Lifestyle Study**
Mary T. Imboden, Matthew P. Harber, Mitchell H. Whaley, W. Holmes Finch, Derron A. Bishop, Bradley S. Fleenor, and Leonard A. Kaminsky
This study found a strong inverse relationship between the change in cardiorespiratory fitness after short-term exercise training and all-cause mortality, equating to a 25% lower mortality risk per MET improvement.
- 1415 **Rates of Help-Seeking in US Adults With Lifetime DSM-5 Eating Disorders: Prevalence Across Diagnoses and Differences by Sex and Ethnicity/Race**
Jaime A. Coffino, Tomoko Udo, and Carlos M. Gnló
These findings emphasize the need to develop strategies to encourage help-seeking among individuals with eating disorders, particularly among men and ethnic/racial minorities.

Continued

- 1427 McArdle Sign: A Specific Sign of Multiple Sclerosis**
Filippo Savoldi, Zahra Nasr, Wei Hu, Nathan D. Schilaty, Adriana M. Delgado, Jay Mandrekar, Kenton R. Kaufman, Lawrence Berglund, and Brian G. Weinschenker   
 McArdle sign is an easily and rapidly tested clinical sign that can be quantitated safely and inexpensively.
- 1436 Systemic Lupus Erythematosus and Increased Prevalence of Atherosclerotic Cardiovascular Disease in Hospitalized Patients**
Gregory Katz, Nathaniel R. Smilowitz, Ashira Blazer, Robert Clancy, Jill P. Buyon, and Jeffrey S. Berger 
 In hospitalized US patients, systemic lupus erythematosus was associated with increased atherosclerotic cardiovascular disease prevalence, which was observed in both sexes and was greatest in younger patients.
- 1444 Metformin and Sulfonylurea Use and Risk of Incident Dementia**
Jeffrey F. Scherrer, Joanne Salas, James S. Floyd, Susan A. Farr, John E. Morley, and Sascha Dublin 
 These results provide robust evidence that metformin use is associated with a modestly lower risk of incident dementia.
- 1457 Age-Related 2-Year Mortality After Transcatheter Aortic Valve Replacement: the YOUNG TAVR Registry**
Eliano P. Navarese, Felicita Andreotti, Michalina Kolodziejczak, Wojciech Wanha, Alexander Lauten, Verena Veulemans, Lara Frediani, Jacek Kubica, Emanuela de Cillis, Wojciech Wojakowski, Andrzej Ochala, Tobias Zeus, Alessandro Bortone, Antonio Buffon, Christian Jung, Vincenzo Pestrichella, and Paul A. Gurbel 
 The 30-day mortality rate was not lower in the younger cohort than in the intermediate and oldest age cohorts.
- 1467 Outcome of Myelodysplastic Syndromes Over Time in the United States: A National Cancer Data Base Study From 2004-2013**
Aref Al-Kali, Darci Zblewski, James M. Foran, Mrinal S. Patnaik, Beth R. Larrabee, Naseema Gangat, Kebede H. Begna, Michelle A. Elliott, William J. Hogan, Ayalew Tefferi, Mark R. Litzow, and Ronald S. Go 
 In the past decade, overall outcome of myelodysplastic syndromes did not improve despite the advent of new therapies.
- 1475 Spinal Stimulation for the Treatment of Intractable Spine and Limb Pain: A Systematic Review of RCTs and Meta-Analysis**
Tim J. Lamer, Susan M. Moeschler, Halena M. Gazelka, W. Michael Hooten, Markus A. Bendel, and M. Hassan Murad  
 Spinal stimulation was more likely to relieve pain in many chronic painful conditions than medical therapy, offering a possible alternative to medical therapy (including opioids).
- 1488 Burden of Valvular Heart Diseases in Hispanic/Latino Individuals in the United States: The Echocardiographic Study of Latinos**
Jonathan Rubin, Shivani R. Aggarwal, Katrina R. Swett, Ajay J. Kirtane, Susheel K. Kodali, Tamim M. Nazif, Min Pu, Rupal Dadhania, Robert C. Kaplan, and Carlos J. Rodriguez 
 Valvular heart disease is fairly common in the Hispanic/Latino population and may constitute an important public health problem.
- 1499 Prevalence and Predictors of Third-Generation Cephalosporin Resistance in the Empirical Treatment of Spontaneous Bacterial Peritonitis**
Dharma B. Sunjaya, Ryan J. Lennon, Vijay H. Shah, Patrick S. Kamath, and Douglas A. Simonetto 
 These findings support the recent observation of a rising prevalence of gram-positive organisms in spontaneous bacterial peritonitis.



- 1509 Role of Loop Diuretic Challenge in Stage 3 Acute Kidney Injury**
Ankit Sakhija, Ghassan Bandak, Erin F. Barreto, Saraschandra Vallabhajosyula, Jacob Jentzer, Robert Albright, and Kianoush B. Kashani 
The loop diuretic challenge appears to be a useful adjunct to assess dialysis needs in patients with advanced acute kidney injury.
- 1516 Comparison of the Short Test of Mental Status and the Montreal Cognitive Assessment Across the Cognitive Spectrum**
Ryan A. Townley, Jeremy A. Syrjanen, Hugo Botha, Walter K. Kremers, Jeremiah A. Aakre, Julie A. Fields, Mary M. Machulda, Jonathan Graff-Radford, Rodolfo Savica, David T. Jones, David S. Knopman, Ronald C. Petersen, and Bradley F. Boeve 
The Short Test of Mental Status performs as well as the Montreal Cognitive Assessment in a variety of settings and neurodegenerative syndromes and better differentiates cognitively normal patients from those with mild cognitive impairment.
- 1524 Adjuvant Therapy in High-Risk Renal Cell Cancer: A Systematic Review and Meta-analysis**
Irbaz B. Riaz, Warda Faridi, Muhammad Husnain, Saad Ullah Malik, Qurat Ul Ain R. Sipra, Farva R. Gondal, Hao Xie, Siddhartha Yadav, and Manish Kohli 
Adjuvant vascular endothelial growth factor tyrosine kinase inhibitors in high-risk renal cell carcinoma did not improve survival. More than half of patients had increased toxicity and lower quality of life.
- 1535 The Safety of Ultrasound-Guided Thoracentesis in Patients on Novel Oral Anticoagulants and Clopidogrel: A Single-Center Experience**
Priya P. Patel, Sidhant Singh, Thomas D. Atwell, Rahul Kashyap, Ryan M. Kern, John J. Mullon, and Darlene R. Nelson 
The use of oral anticoagulants and antiplatelet agents at the time of thoracentesis did not increase risk of hemorrhagic complications in this small retrospective series.
- 1542 Etiologies of Extreme Thrombocytosis: A Contemporary Series**
Ronan W. Hsieh, Aishwarya Ravindran, Christopher C. Hook, Kebede H. Begna, Aneel A. Ashrani, Rajiv K. Pruthi, Ariela L. Marshall, William Hogan, Mark Litzow, James Hoyer, Jennifer L. Oliveira, Prakash Vishnu, Timothy G. Call, Aref Al-Kali, Minal Patnaik, Naseema Gangat, Animesh Pardanani, Ayalew Tefferi, and Ronald S. Go 
Extreme thrombocytosis is a multifactorial hematologic condition, and its etiology differs substantially between inpatients and outpatients.


Medical Image

- 1551 Tentacular-Type Esophageal Squamous Papilloma**
Vincent Zimmer


Brief Report

- 1552 Risk of Hematoma From Aspirin or Clopidogrel Owing to Lumbar Puncture**
Paul W. Lee and Michael Levy 

Special Article

- 1556 Healing the Professional Culture of Medicine**
Tait D. Shanafelt, Edgar Schein, Lloyd B. Minor, Mickey Trockel, Peter Schein, and Darrell Kirch 

Review

- 1567 Pharmacotherapy Approaches in Nontuberculous Mycobacteria Infections**
Jennifer A. Shulha, Patricio Escalante, and John W. Wilson 

Concise Review for Clinicians—CME Credit Offered

- 1582** **Assessing and Counseling the Older Driver: A Concise Review for the Generalist Clinician**
Larisa J.N. Hill, Robert J. Pignolo, and Ericka E. Tung

Please note that articles with an “e” page designation are available only in the online version of the Journal at www.mayoclinicproceedings.org

Residents' Clinic

- 1589** **32-Year-Old Man With New Onset Abdominal Pain**
Samuel A. Shabtaie, Don Chamil Codipilly, and Seth Sweetser
- 1594** **41-Year-Old Man With Fever and Bloody Diarrhea**
Zachary A. Yetmar and Thomas J. Beckman
- e95** **50-Year-Old Man With Dyspnea on Exertion, Orthopnea, and Weight Gain**
Sae K. Jang, Megha Prasad, and LaPrincess C. Brewer

Thematic Review on Neoplastic Hematology and Medical Oncology—CME Credit Offered

- 1599** **Current Diagnosis and Management of Small-Cell Lung Cancer**
Shuhang Wang, Stefan Zimmermann, Kaushal Parikh, Aaron S. Mansfield, and Alex A. Adjei
- 1623** **Non–Small Cell Lung Cancer: Epidemiology, Screening, Diagnosis, and Treatment**
Narjust Duma, Rafael Santana-Davila, and Julian R. Molina

Medical Image

- 1641** **The Crystal Crown**
Hasan Ahmad Hasan Albitar and Delamo I. Bekele

Letters to the Editor

- 1643** **“Real-World” TAVR Data in Constant Flux**
Julia Fayanne Chen, Makoto Mori, and Amar Geirsson
- 1643** **In reply—“Real World” TAVR: Data in Constant Flux**
Eliano P. Navarese and Felicità Andreotti
- 1644** **Strategies of Screening for Fabry Disease in Patients with Unexplained Left Ventricular Hypertrophy**
Sergey Moiseev, Ekaterina Karovaikina, Alexey Moiseev, Nikolai Bulanov, and Victor Fomin
- 1646** **In reply—Strategies of Screening for Fabry Disease in Patients With Unexplained Left Ventricular Hypertrophy**
Darrell B. Newman and Michael J. Ackerman
- 1646** **Pregnancy in Women With Life-Threatening Poisoning With Long-Acting Anticoagulant Rodenticides**
Maidah Yaqoob, Douglas L. Feinstein, and Israel Rubinstein

Albright,

ed acute

t Across

lds,

ettings
ild

ysis

Gondal,

t improve

ts and

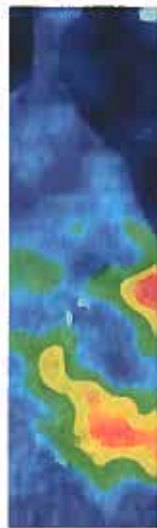
normhagic

K. Pruthi,
y G. Call,

een

Continued

Continued



- 1647 Cannabis Abuse and Elevated Risk of Myocardial Infarction in the Young: A Population-Based Study**
Tarek Chami and Chang H. Kim
- 1649 Vascular Event Risk After Herpes Zoster**
Yi-Ting Lin and Ping-Hsun Wu
- 1650 In reply—Vascular Event Risk After Herpes Zoster**
Brandon J. Patterson, Debora A. Rausch, Debra E. Irwin, and Barbara P. Yawn

Path to Patient Image Quiz

- 1652 Ovarian Fibrothecoma**
J. Kenneth Schoolmeester and Lori A. Erickson

Art at Mayo Clinic

- e101 Sunfish Sail and Sports Club by Pam Spremulli**
Margaret R. Wentz

Other Features

- 15A Professional Opportunities**

Coming Soon...

- | | |
|---|---|
| Elevated Triglycerides and Increased Cardiovascular Risk and Costs in Statin-Treated Patients | Repeat Coronary Bypass Surgery or Percutaneous Coronary Intervention After Previous Surgical Revascularization |
| Oncolytic Measles Virotherapy Does Not Legitimize Opposition to Measles Vaccination | Fungal Diagnostic Stewardship in Bronchoscopy Specimens |
| Changes in Burnout and Satisfaction With Work-Life Integration in Physicians and the General US Working Population Between 2011 and 2017 | Severe Hypoglycemia Attributable to Intensive Glucose-Lowering Therapy |
| A Clinician's Guide to Cannabidiol (CBD) and Hemp Oils | Room for Improvement: Informed Consent Process for Emergency Surgery |
| Exercise Counteracts the Cardiotoxicity of Psychosocial Stress | High-Intensity Interval Training in Cardiac Rehabilitation |
| Effect of Catheter-Based Renal Denervation on Uncontrolled Hypertension | Survival, Progression in Synucleinopathy Phenotypes With Parkinsonism |
| Gender Differences in Pain Risk in Old Age | Neurological Autoimmunity in the Era of Checkpoint Inhibitor Cancer Immunotherapy |
| Precision Medicine Approach for Patients With Unexplained Cytopenias | Barrett Esophagus |