



# MAYO CLINIC PROCEEDINGS

www.mayoclinicproceedings.org



## Table of Contents

June 2019 Volume 94 Number 6

The July online issue of *Proceedings* will be available by Monday, July 1.  
Sign up for an alert to the online Table of Contents at [www.mayoclinicproceedings.org](http://www.mayoclinicproceedings.org)

### In The Limelight

- 929 **In the Limelight: June 2019**  
Karl A. Nath

### Editorials

- 933 **Managing Obesity: Scaling the Pyramid to Success**  
Maria L. Collazo-Clavell
- 936 **DSMA Renal Scan in Cardiac Amyloidosis: Are We Missing Something?**  
Nelson Leung
- 939 **Advancing the Science of E-Visits in Primary Care**  
Elizabeth B. Habermann
- 942 **Fitness Equals Longer Life Expectancy Regardless of Adiposity Levels**  
Jari A. Laukkanen and Setor K. Kunutsor
- 946 **Rising Health Care Charges: A Red Herring in a Value-Based Health Care World?**  
David J. Ballard and Neil S. Fleming

### Medical Image

- 949 **Tracheobronchopathia Osteochondroplastica**  
Nader Kamangar

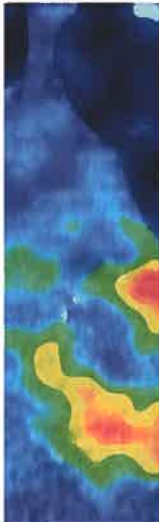
### Commentary

- 951 **Interpreting the Effectiveness of Cancer Screening From National Population Statistics: Is It Sound Practice?**  
Joquin Chapa, Alyson Haslam, and Vinay Prasad

### Perspectives and Controversies

- 957 **What to Offer the 99% of Patients With Severe Obesity Who Do Not Undergo Bariatric Surgery?**  
Bartolome Burguera, Philip Schauer, and Scott Kahan

Continued



## Original Articles

- 961 Renal Infarction and Its Consequences for Renal Function in Patients With Cardiac Amyloidosis**  
Julien Dang, Mukedaisi Abulizi, Anissa Moktefi, Khalil El Karoui, Jean-François Deux, Diane Bodez, Fabien Le Bras, Karim Belhadj, Philippe Remy, Pauline Issaurat, Violaine Plante-Bordeneuve, Valérie Molinier-Frenkel, Pascale Fanen, Soulef Guendouz, Mounira Kharoubi, Emmanuel Itti, Thibaud Damy, and Vincent Audard 
- Acute kidney injury in a patient with cardiac amyloidosis should alert clinicians to the possibility of renal infarction.
- 976 Diagnostic Accuracy in Primary Care E-Visits: Evaluation of a Large Integrated Health Care Delivery System's Experience**  
Rhonda Hertzog, Justin Johnson, James Smith, Frank W. McStay, Briget da Graca, Travis Haneke, Trace Heavener, and Glen R. Couchman 
- In this population, diagnostic accuracy for low-acuity illnesses was equivalent between primary care E-visits and face-to-face encounters.
- 985 Comparative Relevance of Physical Fitness and Adiposity on Life Expectancy: A UK Biobank Observational Study**  
Francesco Zaccardi, Melanie J. Davies, Kamlesh Khunti, and Tom Yates  
- Self-reported walking pace was a powerful predictor of life expectancy across all levels of body mass index and other indices of adiposity.
- 995 Hospital Charges for Urologic Surgery Episodes of Care Are Rising Despite Declining Costs**  
Tyler R. McClintock, Ye Wang, Mahek A. Shah, Matthew Mossanen, Benjamin I. Chung, and Steven L. Chang 
- These authors found a stark discordance with respect to trends in cost relative to charge per episode of urologic surgery over the preceding decade.
- 1003 Predictors and Outcomes of Renal Replacement Therapy After Left Ventricular Assist Device Implantation**  
Rabea Asleh, Sarah Schettle, Alexandros Briasoulis, Jill M. Killian, John M. Stulak, Naveen L. Pereira, Sudhir S. Kushwaha, Simon Maltais, and Shannon M. Dunlay  
- One-third of patients who required renal replacement therapy died before hospital discharge, one-third required outpatient hemodialysis, and only one-third had renal recovery.
- 1015 Perception of the Risk of Stroke and the Risks and Benefits of Oral Anticoagulation for Stroke Prevention in Patients With Atrial Fibrillation: A Cross-Sectional Study**  
Mohammad Hijazi, Sami Aljohani, Fahad Alqahtani, Zakeih Chaker, Muhammad Al Hajji, Ahmad Al Hallak, and Mohamad Alkhoul   
- This study suggests that most patients may have made an uninformed decision about stroke prevention based on an exaggerated perception of their risks.
- 1024 Variable Significance of Brain MRI Findings in Infective Endocarditis and Its Effect on Surgical Decisions**  
Tia Chakraborty, Eugene Scharf, Daniel DeSimone, Abdelghani El Rafei, Waleed Brinjikji, Larry M. Baddour, Walter Wilson, James M. Steckelberg, Jennifer E. Fugate, Eelco F.M. Wijdicks, and Alejandro A. Rabinstein  
- Although the risk of postoperative hemorrhage must always be weighed against the benefit of valve surgery, brain magnetic resonance imaging should not be considered indispensable for surgical clearance.

## Medical Image

- 1033 A Young Woman With A History of Stroke and Recurrent Migraine Headaches**  
Emily Carr and Lana Joudeh

**Brief Report**

- 1035 Trends in Prevalence of Functional Disability in Rheumatoid Arthritis Compared With the General Population**  
*Elena Myasoedova, John M. Davis III, Sara J. Achenbach, Eric L. Matteson, and Cynthia S. Crowson*

**Special Article**

- 1040 The Slow-Motion Catastrophe of Antimicrobial Resistance and Practical Interventions for All Prescribers**  
*Emil P. Lesho and Maryrose Laguio-Vila*

**Review**

- 1048 Thyrotoxicosis: Diagnosis and Management**  
*Anu Sharma and Marius N. Stan*

**Concise Review for Clinicians—CME Credit Offered**

- 1065 Wernicke Encephalopathy—Clinical Pearls**  
*Shirshendu Sinha, Archish Kataria, Bhanu Prakash Kolla, Nuria Thusius, and Larissa L. Loukianova*

Please note that articles with an "e" page designation are available only in the online version of the Journal at [www.mayoclinicproceedings.org](http://www.mayoclinicproceedings.org)

**Residents' Clinic**

- 1073 47-Year-Old Man With Pancytopenia and Fever**  
*Katherine P. Hoversten, Alexandra S. Higgins, and Aneel A. Ashrani*
- 1079 57-Year-Old Woman With Dyspnea and Rash**  
*Zachary T. Lundstrom, Kelly M. Pennington, and Cassandra M. Braun*
- e73 57-Year-Old Man With Vertigo**  
*Shravya Vinnakota, Korosh Sharain, and Robert D. McBane II*

**Thematic Review Series on Precision Medicine—CME Credit Offered**

- 1084 Hereditary Cancer Syndromes—A Primer on Diagnosis and Management, Part 1: Breast-Ovarian Cancer Syndromes**  
*N. Jewel Samadder, Karthik V. Giridhar, Noemi Baffy, Douglas Riegert-Johnson, and Fergus J. Couch*
- 1099 Hereditary Cancer Syndromes—A Primer on Diagnosis and Management, Part 2: Gastrointestinal Cancer Syndromes**  
*N. Jewel Samadder, Noemi Baffy, Karthik V. Giridhar, Fergus J. Couch, and Douglas Riegert-Johnson*

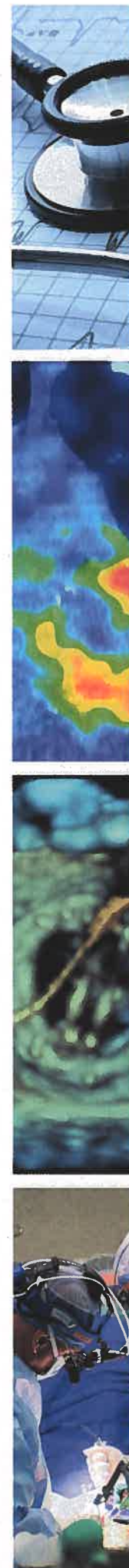
**Medical Image**

- 1117 Vascular Involvement in Loey's-Dietz Syndrome**  
*Philipp Jud and Franz Hafner*

**Letter to the Editor**

- 1120 Contemporary Trends in the Utilization of Administrative Databases in Cardiovascular Research**  
*Mohamed Al-Hajji, Fahad Alqahtani, and Mohamad Alkhoul*

Continued



idosis  
e Bras,

tion.

re  
vener,

ace-to-

ink

other

its

logic

rice

ired

roke

llak,

on an

rgical

ur,

brain

ntinued

---

**Path to Patient Image Quiz**


---

- 1122** **Thymoma**  
Ruifeng Guo and Lori A. Erickson

---

**Art at Mayo Clinic**


---

- e81** **Outdoor Series by Adelita Pandini**  
Margaret R. Wentz

---

**Other Features**


---

- A43** Professional Opportunities  
**1121** Corrections

---

**Coming Soon...**

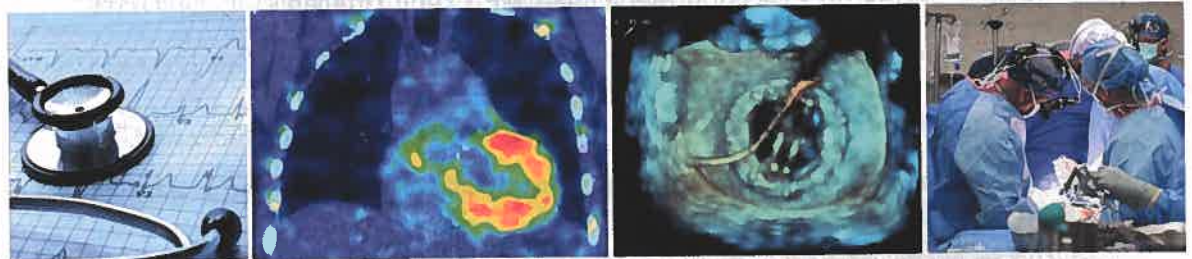

---

- |  |  |
|--|--|
| <b>Phentermine and Coronary Vasospasm-Induced Myocardial Infarction</b>    | <b>Apixaban and Rivaroxaban in Patients With Acute Venous Thromboembolism</b>  |
| <b>Cardiovascular Safety of Febuxostat and Allopurinol</b>                 | <b>Bezafibrate and Risk of Cancer in Patients With Coronary Artery Disease</b> |
| <b>Gender and Progression of Chronic Kidney Disease</b>                    | <b>Predictors of Heart Failure Readmissions</b>                                |
| <b>Ulcerative Colitis</b>  | <b>Immune Checkpoint Inhibitor Toxicities</b>                                  |
| <b>Twiddler's Syndrome: Unusual Cause of ICD Failure</b>                   | <b>Team-Based Primary Care Delivery</b>  |
| <b>Physical Activity, Cognitive Frailty, and Mortality in Older Adults</b> | <b>Time to Optimize Diagnostic Testing for Undifferentiated Conditions</b>     |

---

**Cover Image**


---



The cover image features a cardiovascular theme. The outer left panel displays the stethoscope, the time-honored instrument for listening; this symbolizes individualized care that listens and responds to the patient. Cardiac evaluation may involve a noninvasive office test, the ECG, and, where indicated, noninvasive imaging, in this case, a SPECT CT of the heart (left-of-center) showing increased uptake of technetium pyrophosphate in diagnosing wild-type transthyretin cardiac amyloidosis. The right-of-center panel is from a 3D echocardiogram, left atrium-view of a mechanical mitral bileaflet prosthesis sewing ring and prosthesis leaflets during percutaneous transcatheter closure of a perivalvular leak. A guide wire hovers over the prosthesis, and the imager is guiding the interventional cardiologist to position the tip of the guide wire through one of the perivalvular leak sites. The outer right panel depicts a surgical team involved in cardiac surgery and underscores the importance of teamwork.

---

*Continued*