



MAYO CLINIC PROCEEDINGS

www.mayoclinicproceedings.org



Table of Contents

May 2018 Volume 93 Number 5

The June online issue of *Proceedings* will be available by Friday, June 1.
Sign up for an alert to the online Table of Contents at www.mayoclinicproceedings.org.





Editorials

- 551** Variability of Potassium Blood Testing: Imprecise Nature of Blood Testing or Normal Physiologic Changes?
James F. Dylewski and Stuart Linas
- 555** Failing Kidneys and Thyroid Dysfunction—An Undesirable Synergy
Marius N. Stan and Matthew T. Drake
- 558** Caffeine: A Not So Stiff Drink
Michael J. Joyner
- 560** The Therapeutic Challenge of Rare Diseases
Thom Rooke

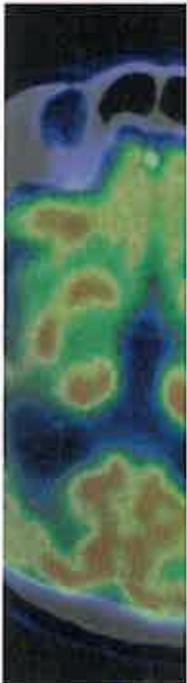
Commentary

- 563** Reimagining Clinical Documentation With Artificial Intelligence
Steven Y. Lin, Tait D. Shanafelt, and Steven M. Asch

Original Articles

- 566** Errors of Classification With Potassium Blood Testing: The Variability and Repeatability of Critical Clinical Tests
Paul A. Friedman, Christopher G. Scott, Kent Bailey, Nikola A. Baumann, David Albert, Zachi I. Attia, Dorothy J. Ladewig, Omar Yasin, John J. Dillon, and Bhupinder Singh 
- These findings highlight the importance of repeating a clinical blood test when results are outside the expected range and do not fit clinical expectations.
- 573** Thyroid Status and Death Risk in US Veterans With Chronic Kidney Disease
Connie M. Rhee, Kamyar Kalantar-Zadeh, Vanessa Ravel, Elani Streja, Amy S. You, Steven M. Brunelli, Danh V. Nguyen, Gregory A. Brent, and Csaba P. Kovesdy   
- Among US veterans with non-dialysis-dependent chronic kidney disease, high-normal and lower TSH levels were associated with higher death risk.

Continued



- 586** Associations of Urinary Caffeine and Caffeine Metabolites With Arterial Stiffness in a Large Population-Based Study
Belen Ponte, Menno Pruijm, Daniel Ackermann, Georg Ehret, Nicolas Ansermot, Jan A. Staessen, Bruno Vogt, Antoinette Pechère-Bertschi, Michel Burnier, Pierre-Yves Martin, Chin B. Eap, Murielle Bochud, and Idris Guessous 🇷🇺 🇨🇭
- Urinary caffeine, paraxanthine, and theophylline excretions were associated with decreased parameters of arterial stiffness, suggesting a protective effect of caffeine intake beyond its blood pressure-lowering effect.
- 597** Risk of Cardiovascular Disease and Venous Thromboembolism Among Patients With Incident ANCA-Associated Vasculitis: A 20-Year Population-Based Cohort Study
Alvise Bertì, Eric L. Matteson, Cynthia S. Crowson, Ulrich Specks, and Divi Comec 🇷🇺 🇨🇭
- Despite similar cardiovascular disease risk factors, patients with incident antineutrophil cytoplasmic antibodies-associated vasculitis have a 3-fold higher risk of cardiovascular disease, and an 8-fold higher risk of cerebrovascular accident, than matched subjects.
- 607** Effect of Race on the Incidence of Aortic Stenosis and Outcomes of Aortic Valve Replacement in the United States
Fahad Alqahtani, Sami Aljohani, Ali Hama Amin, Mohammed Al-Hijji, Oluseun O. Ali, David R. Holmes, and Mohamad Alkhouli 🇷🇺 🇨🇭
- The lower utilization rate of aortic valve replacement in African Americans is multifactorial, but may be partially due to a lower incidence of aortic stenosis in this population.
- 618** Experimental Weight Gain Increases Ambulatory Blood Pressure in Healthy Subjects: Implications of Visceral Fat Accumulation
Naima Covassin, Fatima H. Sert-Kuniyoshi, Prachi Singh, Abel Romero-Corral, Diane E. Davison, Francisco Lopez-Jimenez, Michael D. Jensen, and Virend K. Somers 🇷🇺
- Short-term overfeeding-induced modest weight gain caused significant elevation in 24-hour ambulatory blood pressure, and this pressor response was selectively associated with visceral fat.

Brief Report

- 627** Safety of Lumbar Puncture Performed on Dual Antiplatelet Therapy
Ivan D. Carabenciov, Maximiliano A. Hawkes, and Sara Hocker 🇷🇺

Review


- 630** Case-Based Discussion Regarding Challenges in Patient Selection and Procedural Planning in Left Atrial Appendage Occlusion
Sidakpal S. Panaich, Thomas Munger, Paul Friedman, Charanjit S. Rihal, and David R. Holmes Jr

Concise Review for Clinicians—CME Credit Offered

- 639** Migraine Throughout the Female Reproductive Life Cycle
Stephanie S. Faubion, Pelin Batur, and Anne H. Calhoun 🇷🇺

Please note that articles with an "e" page designation are available only in the online version of the Journal at www.mayoclinicproceedings.org


Residents' Clinic

- 646** 65-Year-Old Woman With Chronic Eosinophilia
Isabel A. Hujoel and Thomas M. Jaeger
- e45** 42-Year-Old Woman With Bilateral Arm Tightness
William C. Stross, Ali A. Alsaad, and Brian P. Shapiro 

Thematic Review Series on Neoplastic Hematology and Medical Oncology—CME Credit Offered

- 651** Chronic Lymphocytic Leukemia: Diagnosis and Treatment
Paolo Strati, Nitin Jain, and Susan O'Brien

Letters to the Editor

- 665** Association Between Cardiorespiratory Fitness and Indices of Coronary Artery Calcification in Men
Sae Young Jae, Jari A. Laukkanen, Yoon-Ho Choi, and Barry A. Franklin
- 666** Reinitiation of Statin Therapy After Discontinuation: A Meta-analysis
Richard Ofori-Asenso, Sophia Zoungas, and Danny Liew 

Path to Patient Image Quiz

- 669** Adenocarcinoma of the Colon and Microsatellite Instability
Lori A. Erickson

Medical Images

- 671** The Hairy Kidney of Erdheim-Chester Disease
Jack C. Scolaro and Alan N. Peiris

Stamp Vignette on Medical Science

- e53** Jöns Jacob Berzelius — A Father of Chemistry
Robert A. Kyle and David P. Steensma 

Art at Mayo Clinic

- e55** *Madonna della Pietà* by Michelangelo
Margaret R. Wentz 

Other Features

43A Professional Opportunities

Coming Soon...

Fetoscopic Therapy for Severe Pulmonary Hypoplasia: Prenatal Regenerative Medicine

Weren't Asked, Didn't Tell: Communication of Suicidal Ideation During the Last Year of Life

Exercise Capacity and the Obesity Paradox in Heart Failure

Serum 25-Hydroxyvitamin D Values and Risk of Mortality

Role of Family History as a Risk Factor for Herpes Zoster

Updates in the Evaluation and Management of Breast Cancer

Aspiration Pneumonia and Related Syndromes

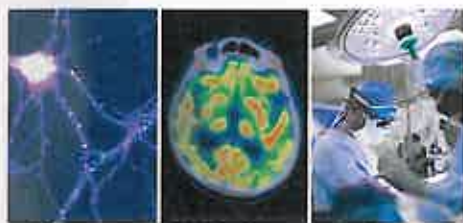
Pulmonary Function Tests for the Generalist

Chronic Inflammatory Demyelinating Polyradiculoneuropathy

50 Year Incidence of Waldenström Macroglobulinemia





Overweight Without Central Obesity, Cardiovascular Risk, and All-Cause Mortality

Cover Image



The composite cover image highlights 3 salient themes: the wide-ranging effects of human biomedical research and discovery in driving progress in understanding and treating human disease (symbolized, on the left, by a neuron and its ramifying dendrites and axons); state-of-the-art investigation in evaluating human disease (symbolized, in the middle, by a positron emission tomographic image of the brain); and the indispensability of teamwork and the coalescence of expertise in providing the best possible care for patients (symbolized, on the right, by a collaborating surgical/interventional team).

Icon Key

-  This article has been given "Editor's Choice" distinction.
-  An author interview accompanies this article.
-  This article is online only at www.mayoclinicproceedings.org.
-  Supplemental material accompanies this article at www.mayoclinicproceedings.org.



"Mayo Clinic Proceedings," "Mayo," "Mayo Clinic," and the triple-shield Mayo Clinic logo are all registered marks of Mayo Foundation for Medical Education and Research.

MAYO CLINIC PROCEEDINGS (ISSN 0025-6196) is published monthly by Elsevier on behalf of Mayo Foundation for Medical Education and Research. Periodicals postage paid at New York, NY, and additional mailing offices. POST MASTER: Send address changes to Elsevier, Journal Returns, 1799 Highway 50 East, Linn, MO 65051, USA.



© 2018 Mayo Foundation for Medical Education and Research

