



# MAYO CLINIC PROCEEDINGS

www.mayoclinicproceedings.org




## Table of Contents

February 2020 Volume 95 Number 2

The March online issue of *Proceedings* will be available by Monday, March 2.  
Sign up for an alert to the online Table of Contents at [www.mayoclinicproceedings.org](http://www.mayoclinicproceedings.org)

## In The Limelight

### 207 In the Limelight: February 2020

Karl A. Nath 

## Editorials

### 210 A Vision of the Platinum Rule

Suzanne M. Norby

### 213 Money Matters: Income and Risk of Chronic Kidney Disease in South Korea

Kaushik Parvathaneni and Deidra C. Crews

### 216 Injection Safety in the United States: Miles to Go?

Priya Sampathkumar

### 218 Are International Standards for Exercise Capacity Ready for Prime Time?

Clinton A. Brawner, Jonathan K. Ehrman, and Steven J. Keteyian

### 221 CRISPR Transgressions, the Language of Wrongness, and the Task of Ethics

Jon C. Tilburt 

### 224 Erasing Paralysis

Michael Sabbah and Atta Behfar

## Medical Image

### 226 Pseudoaneurysm of the Superficial Temporal Artery After Blunt Trauma

Antoine Balligand and Nicolas Mulquin

## Perspective and Controversy

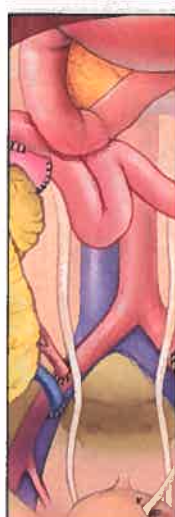
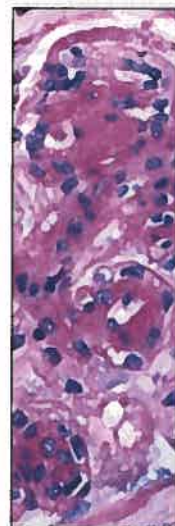
### 228 Maintenance of Certification and the Platinum Rule: An Existential Crisis

Richard G. Ellenbogen, E. Sander Connolly Jr., and Fredric B. Meyer

Continu...

## Original Articles

- 231 Association Between Income Disparities and Risk of Chronic Kidney Disease: A Nationwide Cohort Study of Seven Million Adults in Korea**  
Tae Ik Chang, Hyunsun Lim, Cheol Ho Park, Connie M. Rhee, Kamyar Kalantar-Zadeh, Ea Wha Kang, Shin-Wook Kang, and Seung Hyeok Han 
- In this large nationwide cohort, lower income levels were associated with higher risk for incident chronic kidney disease.
- 243 Patient Notification Events Due to Syringe Reuse and Mishandling of Injectable Medications by Health Care Personnel—United States, 2012–2018: Summary and Recommended Actions for Prevention and Response**  
Melissa K. Schaefer, Kiran M. Perkins, and Joseph F. Perz
- Since 2001, reuse of syringes and other unsafe injection practices by health care personnel in the United States has resulted in the notification of nearly 200,000 patients.
- 255 Development of Global Reference Standards for Directly Measured Cardiorespiratory Fitness: A Report From the Fitness Registry and Importance of Exercise National Database (FRIEND)**  
James E. Peterman, Ross Arena, Jonathan Myers, Susan Marzolini, Robert Ross, Carl J. Lavie, Ulrik Wisløff, Dorthe Stensvold, and Leonard A. Kaminsky 
- Establishing global normative reference values from directly measured cardiorespiratory fitness will improve the ability of researchers and clinicians to identify and stratify cardiorespiratory fitness risk categories.
- 265 Comparative Effectiveness of Sodium-Glucose Cotransporter-2 Inhibitors Versus Other Classes of Glucose-Lowering Medications on Renal Outcome in Type 2 Diabetes**  
Masato Takeuchi, Masahito Ogura, Takaaki Minoura, Nobuya Inagaki, and Koji Kawakami 
- In a matched cohort of type 2 diabetes patients, SGLT2i use was associated with preserved renal function relative to other classes of glucose-lowering medications use over 2 to 4 years.
- 274 Early-Onset Noncommunicable Disease and Multimorbidity Among Adults With Pediatric-Onset Disabilities**  
Daniel G. Whitney, Rachael T. Whitney, Neil S. Kamdar, Edward A. Hurvitz, and Mark D. Peterson 
- Young adults with pediatric-onset disabilities have an early onset of several noncommunicable diseases that represent major contributors to the global and national burden of disease and mortality.
- 283 Ultraviolet Radiation Exposure and the Risk of Herpes Zoster in Three Prospective Cohort Studies**  
Kosuke Kawai, Trang VoPham, Aaron Drucker, Sharon G. Curhan, and Gary C. Curhan 
- Ambient ultraviolet radiation was associated with a higher risk of herpes zoster in men but not in women.
- 293 Alcohol Consumption and Progression of Chronic Kidney Disease: Results From the Korean Cohort Study for Outcome in Patients with Chronic Kidney Disease**  
Young Su Joo, Heebyung Koh, Ki Heon Nam, Sangmi Lee, JooHwan Kim, Changhyun Lee, Hae-Ryong Yun, Jung Tak Park, Ea Wha Kang, Tae Ik Chang, Tae-Hyun Yoo, Kook-Hwan Oh, Dong Wan Chae, Kyu-Beck Lee, Soo Wan Kim, Joongyub Lee, Shin-Wook Kang, Kyu Hun Choi, Curie Ahn, and Seung Hyeok Han 
- This large cohort study showed that heavy alcohol consumption, particularly binge drinking, was associated with a significantly higher risk of chronic kidney disease progression.





## Thematic Review Series on Women's Health—CME Credit Offered

- 384** Sex Differences in Systemic Lupus Erythematosus: Epidemiology, Clinical Considerations, and Disease Pathogenesis

*Julie S. Nusbaum, Ibraheem Mirza, Justine Shum, Robert W. Freilich, Rebecca E. Cohen, Michael H. Pillinger, Peter M. Izmirly, and Jill P. Buyon*

## Thematic Review Series on Vaccines

- 395** Routine Childhood Vaccines Given in the First 11 Months of Life

*Robert M. Jacobson*

## Case Report

- 406** CELLTOP Clinical Trial: First Report From a Phase 1 Trial of Autologous Adipose Tissue—Derived Mesenchymal Stem Cells in the Treatment of Paralysis Due to Traumatic Spinal Cord Injury

*Mohamad Bydon, Allan B. Dietz, Sandy Goncalves, F M Moinuddin, Mohammed Ali Alvi, Anshit Goyal, Yagiz Yolcu, Christine L. Hunt, Kristin L. Garlanger, Anna S. Del Fabro, Ronald K. Reeves, Andre Terzic, Anthony J. Windebank, and Wenchun Qu*

## Medical Image

- 415** Patent Foramen Ovale “High-Risk” Anatomy: Contemporary Echocardiography Evaluation

*Julio C. Souza-Sosa and Oscar Millan-Iturbe*

## Letters to the Editor

- 417** Regression of Bone-Tracer Uptake in Cardiac Transthyretin Amyloidosis

*Dion Groothof, Hans L.A. Nienhuis, Johan Bijzet, Ewout J. Houwerzijl, Maarten P. van den Berg, Andor W.J.M. Glaudemans, Riemer H.J.A. Slart, and Bouke P.C. Hazenberg*

- 419** Globus Pallidus Externus Deep Brain Stimulation Treats Insomnia in a Patient With Parkinson Disease

*Pablo R. Castillo, Erik H. Middlebrooks, Sanjeet S. Grewal, Lela Okromelidze, James F. Meschia, Alfredo Quinones-Hinojosa, Ryan J. Uitti, and Robert E. Wharen Jr.*

- 422** IgA Vasculitis (Henoch-Schönlein Purpura) in Argentina: Comparison Between Pediatric and Adult Populations

*Martín Brom, Ignacio J. Gandino, and Marina Scolnik*

- 424** In Reply, IgA Vasculitis (Henoch-Schönlein Purpura) in Argentina: Comparison Between Pediatric and Adult Population

*Matthew Koster and Michel Villatoro-Villar*

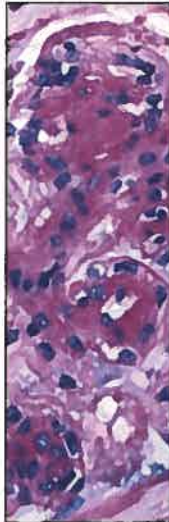
- 424** Oncology Drug Advisory Committee Recommendations and the US Food and Drug Administration's Actions

*Alyson Haslam, Jennifer Gill, and Vinay Prasad*

## Path to Patient Image Quiz

- 427** Intestinal Spirochetosis

*Lori A. Erickson and Michael S. Torbenson*



Art at Mayo Clinic

e19 *The River* by Pat and Gage Kruse

Margaret R. Wentz

Other Features

21A Professional Opportunities

Coming Soon...

Predatory Journals: A Cautionary Tale

Vaccine Licensure, Approval, and Recommendations for Use

Can Pain Management Be Safely Optimized in Older Adults?

Effects of Exercise on Glucose-Lowering Medications

Bariatric Surgery as a Medically Necessary Treatment

Treatment Options for Breast Pain

Electronic Health Record Usability and Professional Burnout

Sex Differences in Diabetic Kidney Disease

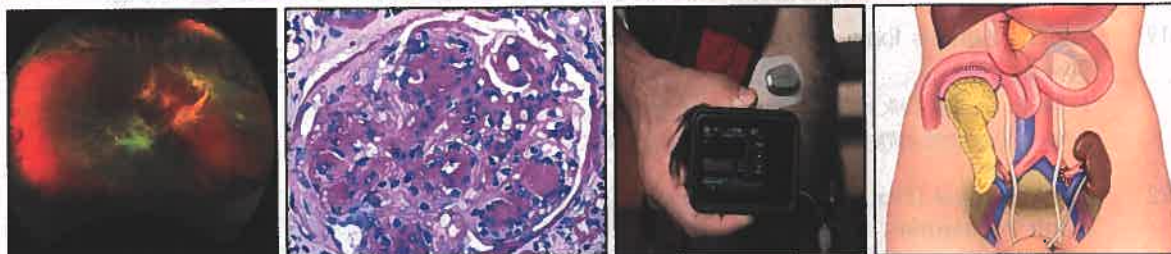
Nonalcoholic Fatty Liver Disease in Atrial Fibrillation

Treatment of the Connective Tissue Disease Related Interstitial Lung Diseases

Is My Patient Overwhelmed? Determining Burden of Treatment

Oral Anticoagulants Among Nonvalvular Atrial Fibrillation Patients With Diabetes

Cover Image



For 2020, the theme chosen for the cover image is diabetes mellitus. This composite cover image shows on moving from left to right: an ultrawide field fundus photograph depicting severe proliferative diabetic retinopathy with tractional retinal detachment and vitreous hemorrhage (courtesy Dr Raymond Iezzi); periodic acid-Schiff (PAS) stained histologic image of diabetic nephropathy demonstrating diffuse and nodular diabetic glomerulosclerosis (courtesy Dr Sanjeev Sethi); loop glucose:insulin control system (the artificial pancreas) for the treatment of type diabetes (courtesy Dr Yogish Kudva and Ms Shelly McCrady-Spitzer); and a pictorial representation of kidney and pancreas transplantation for type 1 diabetes (courtesy Dr Yogish Kudva, Dr Ravinder Kaur, and Ms Joanna King).