



MAYO CLINIC PROCEEDINGS

www.mayoclinicproceedings.org



Table of Contents

November 2018 Volume 93 Number 11

The December online issue of *Proceedings* will be available by Monday, December 3.
Sign up for an alert to the online Table of Contents at www.mayoclinicproceedings.org

Editorials

- 1537** Cognitive Impairment, Anesthesia, and Critical Illness: Learning From the Past to Gain Perspective on the Future
Ian J. Barbash
- 1540** The Insomniac's Kidney—A Novel Perspective on Renal Dysfunction
Naima Covassin and Virend K. Somers
- 1543** Rethinking Amyotrophic Lateral Sclerosis
Jeffrey Rosenfeld
- 1546** Seek and You Shall Find: Is Subclinical Amyloid More Common Than Expected?
Laura Obici and Giampaolo Merlini

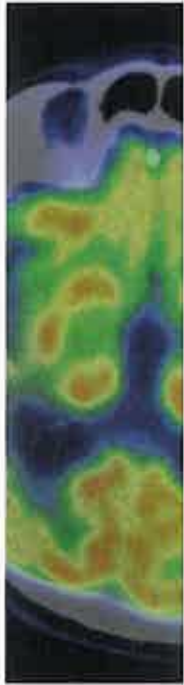
Commentary

- 1549** The Heart of the Hospital
James S. Newman

Original Articles

- 1552** Effect of Cognitive Status on the Receipt of Procedures Requiring Anesthesia and Critical Care Admissions in Older Adults
Phillip J. Schulte, David P. Martin, Atousa Deljou, Moldovan Sabov, Rosebud O. Roberts, David S. Knopman, Ronald C. Petersen, Toby N. Weingarten, Andrew C. Hanson, Darrell R. Schroeder, David O. Warner, and Juraj Sprung
- Patients with mild cognitive impairment or dementia are not more likely to undergo surgery or to require intensive care unit admission after procedures.
- 1563** Association of Chronic Insomnia With Mortality and Adverse Renal Outcomes
Jun Ling Lu, Amado X. Freire, Miklos Z. Molnar, Kamyar Kalantar-Zadeh, and Csaba P. Kovesdy
- Chronic insomnia is associated with a higher risk of development and progression of kidney disease.

Continued



- 1571** Physician Burnout, Well-being, and Work Unit Safety Grades in Relationship to Reported Medical Errors
Daniel S. Tawfik, Jochen Profit, Timothy I. Morgenthaler, Daniel V. Satele, Christine A. Sinsky, Liselotte N. Dyrbye, Michael A. Tutty, Colin P. West, and Tait D. Shanafelt 🇺🇸 🇨🇦
- In this large national study, physician burnout, fatigue, and work unit safety grades were independently associated with major medical errors.
- 1581** Frontal Fibrosing Alopecia in Women: The Mayo Clinic Experience With 148 Patients, 1992-2016
Reese L. Imhof, Hafsa M. Chaudhry, Sydney C. Larkin, Rochelle R. Torgerson, and Stanislav N. Talkachjov 🇺🇸
- There are many challenges surrounding the treatment of patients with frontal fibrosing alopecia. Although combination therapy is helpful in slowing disease progression, recurrence is common.
- 1589** Ideal Cardiovascular Health and Incident Cardiovascular Disease Among Adults: A Systematic Review and Meta-analysis
Robinson Ramírez-Vélez, José M. Saavedra, Felipe Labelo, Carlos A. Celis-Morales, Borja del Pozo-Cruz, and Antonio García-Hermoso 🇺🇸
- Meeting 3 to 4 of the 7 ideal cardiovascular health profile metrics was associated with an average 31% to 56% reduction in cardiovascular disease.
- 1600** The Return of Actionable Variants Empirical (RAVE) Study, a Mayo Clinic Genomic Medicine Implementation Study: Design and Initial Results
Ifikhar J. Kullo, Janet Olson, Xiao Fan, Merin Jose, Maya Safarova, Carmen Radecki Breitkopf, Erin Winkler, David C. Kochan, Sara Snipes, Joel E. Pacyna, Meaghan Carney, Christopher G. Chute, Jyoti Gupta, Sheethal Jose, Eric Verner, Mullai Murugan, Yunyun Jiang, Magdi Zordok, Medhat Farwati, Maraisha Philogene, Erica Smith, Gabriel Q. Shaibi, Pedro Caraballo, Robert Freimuth, Noralane M. Lindor, Richard Sharp, and Stephen N. Thibodeau 🇺🇸 🇨🇦
- This ongoing study will inform best practices for implementing genomic sequencing in the clinical setting.

Brief Report

- 1611** Long-Term Weight Loss and Metabolic Health in Adults Concerned With Maintaining or Losing Weight: Findings From NHANES
Gregory Knell, Qing Li, Kelley Pettee Gabriel, and Kerem Shuval

Reviews



- 1617** Amyotrophic Lateral Sclerosis: An Update for 2018
Björn Oskarsson, Tania F. Gendron, and Nathan P. Staff 🇺🇸
- 1629** Glucose-Lowering Therapies for Cardiovascular Risk Reduction in Type 2 Diabetes Mellitus: State-of-the-Art Review
Salvatore Carbone, Dave L. Dixon, Leo F. Buckley, and Antonio Abbate 🇺🇸

Concise Review for Clinicians—CME Credit Offered

- 1648 **Migraine Headache: Updates and Future Developments**
Parker E. Bohm, Fernando F. Stancampiano, and Todd D. Rozen 

Please note that articles with an "e" page designation are available only in the online version of the Journal at www.mayoclinicproceedings.org


Residents' Clinic

- 1654 **62-Year-Old Man With Fever and Pruritic Rash**
Benjamin P. Cochran, ErinMarie O. Kimbrough, and Ricardo J. Pagán 
- 1659 **29-Year-Old Woman With Fever and Bilateral Lower Extremity Lesions**
Derek W. Ebner, Marie Hu, and Thomas H. Poterucha
- e113 **45-Year-Old Man With Abdominal Pain and Splenomegaly**
Kelly C. Gast, Kate Hoversten, and Mrinal M. Patnaik 

Thematic Review on Women's Health—CME Credit Offered

- 1664 **State-of-the-Art Diagnosis and Treatment of Hypertension in Pregnancy**
Laura A. Magee and Peter von Dadelszen 

Case Report

- 1678 **A Patient With Hereditary ATTR and a Novel AGel p.Ala578Pro Amyloidosis**
Meera Sridharan, W. Edward Highsmith, Paul J. Kurtin, Michael T. Zimmermann, Jason D. Theis, Surendra Dasari, and David Dingli 

Letters to the Editor

- 1683 **Burnout is Not Associated With Increased Medical Errors**
Nicholas D. Lawson
- 1683 **In Reply—Burnout Is Not Associated With Increased Medical Errors**
Daniel S. Tawfik, Jochen Profit, Timothy I. Morgenthaler, Daniel V. Satele, Christine Sinsky, Liselotte Dyrbye, Michael Tutty, Colin P. West, and Tait D. Shanafelt
- 1684 **Short Telomere Syndromes, Biological Aging, and Hematopoietic Stem Cell Transplantation**
Alessandro Testori
- 1685 **In Reply—Short Telomere Syndromes, Biological Aging, and Hematopoietic Stem Cell Transplantation**
Abhishek A. Mangaonkar and Mrinal M. Patnaik

Continued



- 1687 **Efficacy of Warfarin Anticoagulation and Incident Dementia: Does Cognitive Impairment Reduce Efficacy?**
Michael R. Bubb
- 1687 **In Reply—Efficacy of Warfarin Anticoagulation and Incident Dementia: Does Cognitive Impairment Reduce Efficacy?**
Malini Madhavan, Bernard J. Gersh, Susan A. Weston, and Alanna M. Chamberlain
- 1688 **Comment on Medical Cannabis for Obstructive Sleep Apnea: Premature and Potentially Harmful**
Eugene L. Scharf, Jon O. Ebbert, and Ryan T. Hurt
- 1689 **In Reply—Comment on Medical Cannabis for Obstructive Sleep Apnea: Premature and Potentially Harmful**
Bhanu Prakash Kolla, Meghna P. Mansukhani, Eric J. Olson, Erik K. St. Louis, Michael H. Silber, and Timothy I. Morgenthaler


Medical Images

- 1690 **False-Positive DaTscan Features With Methylphenidate and Phentermine Therapy**
Kenneth N. Huynh and Ba D. Nguyen

Path to Patient Image Quiz

- 1692 **Classic Hodgkin Lymphoma**
Linda N. Dao and Lori A. Erickson

Stamp Vignette on Medical Science

- e119 **Herman Boerhaave — Master Clinician and Humanist**
Robert A. Kyle and David P. Steensma 

Art at Mayo Clinic

- e121 **Mosaic Flower Painting by Rhonda Tesch**
Margaret R. Wentz 

Reduce

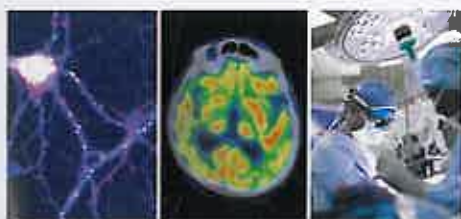
Other Features

49A Professional Opportunities

Coming Soon...





Advances in Treatment of Sickle Cell Disease	Diabetes and Survival After Liver Transplantation
Supraventricular Arrhythmias: Common Scenarios for the Internist	Urinary Sodium Excretion and Risk of Stroke
Pharmacologic Treatment of Intensive Care Unit Delirium	Talking to Patients About Medical Cannabis
Mortality and ESRD in Patients With Type 2 Diabetes After Acute Kidney Injury	Diagnosis of Hypertensive Disorders of Pregnancy
Leisure-Time Physical Activities and Life Expectancies	Health Literacy and Mortality in Adults Hospitalized for Cardiovascular Disease
Outcomes After Aneurysmal Subarachnoid Hemorrhage	Impact of Dual Energy X-ray Absorptiometry Testing on Fractures

Cover Image



The composite cover image highlights 3 salient themes: the wide-ranging effects of human biomedical research and discovery in driving progress in understanding and treating human disease (symbolized, on the left, by a neuron and its ramifying dendrites and axons); state-of-the-art investigation in evaluating human disease (symbolized, in the middle, by a positron emission tomographic image of the brain); and the indispensability of teamwork and the coalescence of expertise in providing the best possible care for patients (symbolized, on the right, by a collaborating surgical/interventional team).

Icon Key

-  This article has been given "Editor's Choice" distinction.
-  An author interview accompanies this article.
-  This article is online only at www.mayoclinicproceedings.org.
-  Supplemental material accompanies this article at www.mayoclinicproceedings.org.



"Mayo Clinic Proceedings," "Mayo," "Mayo Clinic," and the triple-shield Mayo Clinic logo are all registered marks of Mayo Foundation for Medical Education and Research.

MAYO CLINIC PROCEEDINGS (ISSN 0025-6196) is published monthly by Elsevier on behalf of Mayo Foundation for Medical Education and Research. Periodicals postage paid at New York, NY, and additional mailing offices. POST MASTER: Send address changes to Elsevier, Journal Returns, 1799 Highway 50 East, Linn, MO 65051, USA.



© 2018 Mayo Foundation for Medical Education and Research

Supplemental material attached to journal articles has not been edited, and the authors take responsibility for the accuracy of all data.

continued

