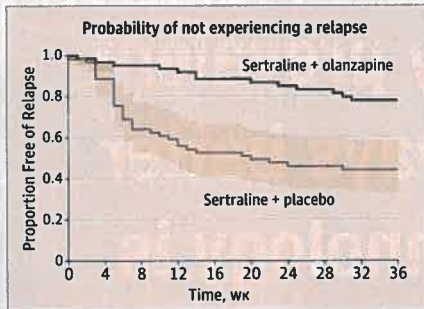


Research

Continuing Olanzapine for Psychotic Depression in Remission 622



Combined pharmacotherapy for major depressive disorder with psychotic features includes antidepressant and antipsychotic medications, but it is unclear whether patients in remission should discontinue antipsychotic treatment to avoid serious adverse drug-related events. Flint and colleagues for the STOP-PD II Study Group randomized 126 patients in remission for an episode of psychotic depression

treated with sertraline plus olanzapine and found that continuing combined therapy vs treatment with sertraline alone reduced the risk of relapse over 36 weeks. In an Editorial, Coryell discusses the long-term clinical management of patients with psychotic depression.

Editorial 615

Visual Abstract jama.com CME jamanetwork.com/learning

Thyroid Function Test Abnormalities and Preterm Birth 632

Overt hypothyroidism and Graves hyperthyroidism during pregnancy are established risk factors for preterm birth, but it is uncertain whether thyroid function test abnormalities in the absence of overt disease are also associated with an increased risk of prematurity. The Consortium on Thyroid and Pregnancy—Study Group on Preterm Birth analyzed data for 47045 pregnant women and found that subclinical hypothyroidism, isolated hypothyroxinemia, and detection of thyroid peroxidase antibodies were associated with a higher risk of preterm birth. In an Editorial, Cappola and Casey discuss the lack of evidence to support screening or treatment for subclinical hypothyroidism.

Editorial 617

Smoking Cessation and Cardiovascular Disease 642

Estimates vary for the length of time after smoking cessation that the risk of cardiovascular disease diminishes to the level of a never smoker. Duncan and colleagues conducted a retrospective study of 8770 individuals and found that smoking cessation was associated with a lower risk of cardiovascular disease within 5 years but remained elevated for 10 to 15 years.

Editor's Note 651

CME jamanetwork.com/learning



Humanities

Poetry and Medicine

698 Playing Word Games
SF Martinello

JAMA Revisited

699 The Relation of Pathology to Practice: Francis Carter Wood, M.D., New York

Opinion

Viewpoint

605 The Conundrum of the USMLE Score Reporting Structure
JL Swails, O Aibana, and BJ Stoll

607 A New Supreme Court Ruling on Drug Liability
MC Johnston, MM Boumil, and G Curfman

609 Protecting Pregnant Women With Substance Use Disorders and Their Neonates Participating in Research
JM Davis, L Yao, and BE Bierer

611 Electronic Fetal Monitoring to Prevent Fetal Brain Injury
E Hirsch

A Piece of My Mind

613 A Tale of Two Lungs
MK Hensley

Editorial

615 Maintenance Treatment for Psychotic Depressive Disorders
WH Coryell

617 Thyroid Function Test Abnormalities During Pregnancy
AR Cappola and BM Casey

619 Broadening Criteria for BRCA1/2 Evaluation
S Domchek and M Robson

Editor's Note

651 Smoking Cessation and Reduction of Cardiovascular Disease Risk
TB Cole

LETTERS

Research Letter

691 Prevalence and Characteristics of Virginia Hospitals Suing Patients and Garnishing Wages for Unpaid Medical Bills
WE Bruhn and Coauthors

Comment & Response

692 Monitoring Adherence to Inhaled Medications

694 Resuming Anticoagulation After Cerebral Intraparenchymal Hemorrhage

695 Treating Hypercholesterolemia in Older Adults

696 Clarification of Reporting of Potential Conflicts of Interest in JAMA Articles

696 Correction

Editor in Chief
Howard Bauchner, MD

136 YEARS
OF CONTINUOUS
PUBLICATION

Clinical Review & Education

RECOMMENDATION STATEMENT

Risk Assessment for *BRCA*-Related Cancer in Women 652

Pathogenic mutations in breast cancer susceptibility genes 1 and 2 (*BRCA1/2*) are associated with increased risks for breast, ovarian, fallopian tube, and peritoneal cancer in women. The US Preventive Services Task Force recommends that primary care clinicians assess women with a personal or family history of breast, ovarian, tubal, or peritoneal cancer or who have an ancestry associated with *BRCA1* and *BRCA2* gene mutations using a valid risk assessment tool. In an Editorial, Domchek and Robson recommend targeted screening of high-risk groups.

📖 Editorial 619 Related Article 666 JAMA Patient Page 702
🎧 Author Audio Interview jama.com CME jamanetwork.com/learning

EVIDENCE REPORT

Outcomes of *BRCA* Testing and Counseling 666

Recommendations for risk assessment, genetic counseling, and genetic testing of women with unknown *BRCA1/2* mutation status should be based on scientific evidence. Nelson and colleagues reviewed 103 studies with 92712 participants and found that the benefits and harms of risk assessment, genetic counseling, and genetic testing to reduce cancer incidence and mortality associated with *BRCA1* and *BRCA2* have not been directly evaluated by current research.

📖 Editorial 619 Related Article 652 JAMA Patient Page 702
🎧 Author Audio Interview jama.com

Catheter Ablation for Atrial Fibrillation 686

Catheter ablation is effective for maintaining sinus rhythm and relieving symptoms of atrial fibrillation. This JAMA Insights article by Upadhyay and Alenghat discusses therapeutic options for patients with atrial fibrillation.

Related Article 688

A Man With Fatigue, Dizziness, and Palpitations 688

This JAMA Clinical Challenge by Soliman and colleagues presents a 65-year-old man with increasing fatigue, dizziness, and palpitations. What would you do next?

📖 Related Article 686

📖 Online @ jama.com



Editor's Audio Summary

Howard Bauchner, MD, summarizes and comments on this week's issue.

Visual Abstract

Effect of Continuing Olanzapine vs Placebo on Relapse Among Patients With Psychotic Depression in Remission: The STOP-PD II Randomized Clinical Trial

Audio Interview

Jennifer Ligibel, MD, Dana-Farber Cancer Institute, discusses weight management for patients with cancer.

Author Audio Interview



Jennifer L. Swails, MD, author of "The Conundrum of the United States Medical Licensing Examination Score Reporting Structure"

Carol M. Mangione, MD, MSPH, author of "Risk Assessment, Genetic Counseling, and Genetic Testing for *BRCA*-Related Cancer: US Preventive Services Task Force Recommendation Statement"

Risk Assessment, Genetic Counseling, and Genetic Testing for *BRCA*-Related Cancer



JAMA Patient Page

702 Should I Be Tested for *BRCA* Mutations?

NEWS & ANALYSIS

Medical News & Perspectives

596 Weighing the Risks and Rewards of Peanut Oral Immunotherapy

598 Getting Social: Physicians Can Counteract Misinformation With an Online Presence

601 The JAMA Forum

Averting Alert Fatigue to Prevent Adverse Drug Reactions

602 JAMA Infographic

Prevalence and Treatment of Chronic Obstructive Pulmonary Disease (COPD) in the United States

603 Global Health

Gag Rule May Increase Abortions

Viruses Drive Children's Pneumonia

Fighting Epilepsy Stigma

604 News From the FDA

Ventilator Recall

Another Option for Hypoactive Sexual Desire

First Treatment for Rare Autoimmune Neuromyelitis

Departments

593 Staff Listing

690 CME Questions

700 Classified Advertising

700 Journal Advertiser Index

701 Contact Information

Instructions for Authors

jama.com/public/instructionsforauthors.aspx