

## Research

### Gluten Intake and Celiac Disease

514

In genetically predisposed individuals, ingestion of gluten may cause an inflammatory response leading to celiac disease. Aronsson and colleagues enrolled 6605 children in a prospective observational birth cohort study and found that higher gluten intake during the first 5 years of life was associated with increased risk of celiac disease autoimmunity and celiac disease among genetically predisposed children. In an Editorial, Leonard and Fasano discuss the relationship of diet to the development of chronic disease.

◀ Editorial 510

➤ CME [jamanetwork.com/learning](http://jamanetwork.com/learning)

### Blood Pressure Control and Cerebral White Matter Lesions

524

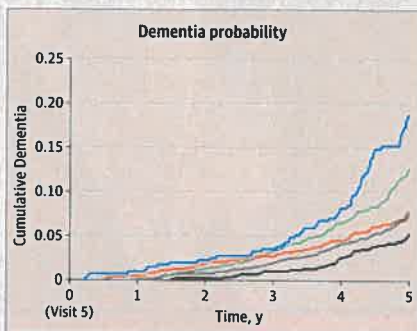
Hypertension is a risk factor for cerebral small vessel ischemic disease. Nasrallah and colleagues conducted a trial substudy of 670 hypertensive adults and found that targeting a systolic blood pressure of less than 120 mm Hg compared with less than 140 mm Hg was associated with a smaller increase in cerebral white matter lesion volume and a greater decrease in total brain volume. In an Editorial, Prabhakaran discusses the potential benefits of midlife blood pressure control for late-life brain health.

◀ Editorial 512 Related Article 535

➤ Summary Video [jama.com](http://jama.com)

### Midlife to Late-Life Blood Pressure and Dementia

535



The relationship of late-life blood pressure, past hypertension, and cognitive functioning is unclear. Walker and colleagues followed up 4761 participants in a long-term cohort study and found that a pattern of sustained hypertension from midlife to late life and a pattern of midlife hypertension followed by late-life hypotension, compared with midlife and late-life normal blood pressure, were associated with increased risks of subsequent dementia.

◀ Editorial 512 Related Article 524

➤ Summary Video [jama.com](http://jama.com)

## Opinion

### Viewpoint

497 Promoting Trust Between Patients and Physicians in the Era of Artificial Intelligence

S Nundy, T Montgomery, and RM Wachter

499 Advances in Understanding the Pathophysiology of Chronic Fatigue Syndrome

AL Komaroff

501 Offering Emergency Buprenorphine Without a Prescription

PJ Roy and MD Stein

503 Regionalization of Care and the Maternal-Infant Dyad Disconnect

SC Handley, SK Srinivas, and SA Lorch

### A Piece of My Mind

505 A Delicate Bond

R Diamond

### Editorial

507 Building Trust in Health Care—Why, Where, and How

D Khullar

510 Gluten and Celiac Disease Risk: Is It Just a Matter of Quantity?

MM Leonard and A Fasano

512 Blood Pressure, Brain Volume and White Matter Hyperintensities, and Dementia Risk

S Prabhakaran

## LETTERS

### Research Letter

574 Pulmonary Embolism Hospitalization, Readmission, and Mortality Rates in US Older Adults, 1999-2015

B Bikdeli and Coauthors

576 Perceived Bullying Among Internal Medicine Residents

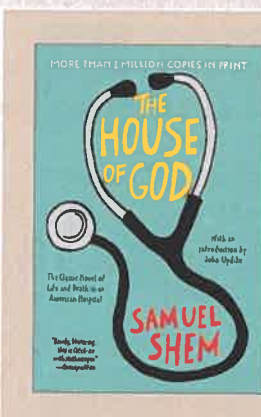
MS Ayyala, R Rios, and SM Wright

### Comment & Response

578 Sex Differences in Grant Funding

580 Strategies to Adjust Positive End-Expiratory Pressure in Patients With ARDS

582 Time Horizons in Cost Analyses



## Humanities

### The Arts and Medicine

486 Basch Unbound—*The House of God* and Fiction as Resistance at 40

S Bergman

488 *The House of God* at Age 40—An Appreciation

JS Faust

### Poetry and Medicine

584 Neither Pause nor Gaze at What Is Passing

R Denerberg

### JAMA Revisited

585 Gomers

Editor in Chief  
Howard Bauchner, MD

136 YEARS  
OF CONTINUOUS  
PUBLICATION



## Research (continued)

### Air Pollution and Emphysema

546

Exposure to ambient air pollution is associated with respiratory morbidity and mortality. In a cohort study involving 7071 adults, Wang and colleagues found that long-term exposure to specific air pollutants was associated with worsening emphysema.

Summary Video [jama.com](http://jama.com) CME [jamanetwork.com/learning](http://jamanetwork.com/learning)

## Clinical Review & Education

### Extracorporeal Life Support

557



Extracorporeal life support provides gas exchange for patients with severe respiratory or cardiovascular impairment. Brodie and colleagues review the use of extracorporeal life support in adult patients who have respiratory failure, massive pulmonary embolism, or acute decompensation of pulmonary hypertension.

Author Audio Interview [jama.com](http://jama.com)

### Use of Bone Turnover Markers for Clinical Research

569

Bone turnover markers, which can be measured in blood or urine, reflect current bone metabolism. This JAMA Insights article by Bauer discusses the use of bone turnover markers for drug development and clinical research studies.

### A Woman With Dyspnea and Bronchiectasis

571



This JAMA Clinical Challenge by Riley and colleagues presents a 41-year-old woman with progressive cough and dyspnea who had evidence of emphysema, bronchiectasis, and severe airway obstruction. What would you do next?

## Online @ jama.com



### Editor's Audio Summary

Howard Bauchner, MD, summarizes and comments on this week's issue.

### The House of God at 40



A short documentary details the book's origins and the people and events that inspired its stories.

### Summary Videos

Blood pressure and brain volume

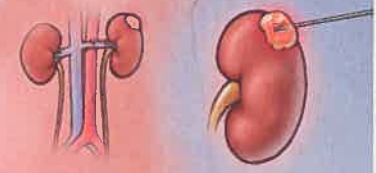
### Author Audio Interview



Interview with Daniel Brodie, MD, author of "Extracorporeal Life Support for Adults With Respiratory Failure and Related Indications: A Review"

### Trust in Health Care

An Editorial in this issue wraps up the Trust in Health Care series of Viewpoints, launched in January.



### JAMA Patient Page

588 Small Kidney Tumors

## NEWS & ANALYSIS

### Medical News & Perspectives

490 Mounting Evidence and Netflix's Decision to Pull a Controversial Suicide Scene

492 For Mortality, Busting the Myth of 10 000 Steps per Day

### The JAMA Forum

493 Bringing It Home: The Shift in Where Health Care Is Delivered

### 495 Biotech Innovations

Smart Devices Detect Agonal Breathing in Cardiac Arrest

Detecting Circulating Tumor Cells Through the Skin

Meditation App Improves Attention in Young Adults

### 496 News From the CDC

Tuberculin Antigen Shortage

Reductions in Rotavirus Infections

## Departments

483 Staff Listing

573 CME Questions

586 Classified Advertising

586 Journal Advertiser Index

587 Contact Information

## Instructions for Authors

[jama.com/public/instructionsforauthors.aspx](http://jama.com/public/instructionsforauthors.aspx)