

Research

Home Screening for Atrial Fibrillation

146

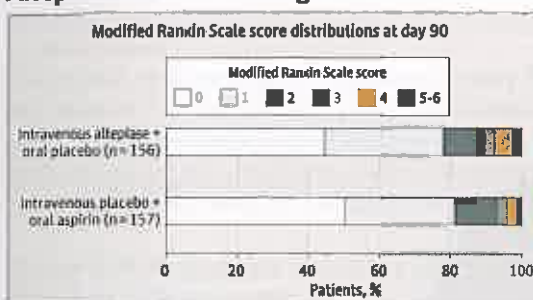
Atrial fibrillation (AF) is a common, treatable risk factor for stroke, but many patients with AF are undiagnosed. Steinhubl and colleagues randomized 2659 individuals at high risk for AF to receive immediate or delayed monitoring with a home-based electrocardiographic patch and found that immediate monitoring resulted in a higher rate of AF diagnosis after 4 months. In accompanying Editorials, Peterson and Harrington discuss the applicability of pragmatic trials for evaluating wearable health monitoring devices, and Steinberg and Piccini recommend further research to clarify whether screening for AF can improve clinical outcomes.

Editorial 137 and 139

Animated Summary Video jama.com CME jamanetwork.com/learning

Alteplase for Nondisabling Acute Ischemic Stroke

156



Alteplase is the standard of care for patients with ischemic stroke and disabling neurologic deficits, but the optimal management of patients with nondisabling deficits is unclear. Khatri and colleagues randomized 313 patients who had acute ischemic stroke with minor

neurologic deficits and found that treatment with alteplase vs aspirin did not increase the likelihood of favorable functional outcome at 90 days. In an Editorial, Powers suggests that patients with ischemic stroke who have minimal deficits should receive aspirin, with close monitoring of neurologic function.

Editorial 141

Acupuncture for Relief of Joint Symptoms

167

Among women with hormone-sensitive breast cancer, arthralgia is often cited as a reason for discontinuing aromatase inhibitor therapy. Hershman and colleagues randomized 226 postmenopausal women with early-stage breast cancer treated with aromatase inhibitors and observed a small benefit of acupuncture therapy.



Humanities

Poetry and Medicine

207 Too Small, Too Soon
J Starke

JAMA Revisited

208 Current Comment: The Hen and Her Imitators

Opinion

Viewpoint

129 Helping to End Addiction Over the Long-term: The Research Plan for the NIH HEAL Initiative
FS Collins, WJ Koroshetz, and MD Volkow

131 The Philip Morris International-Funded Foundation for a Smoke-Free World
HK Koh and AC Geller

133 Transition to the ICD-10 in the United States: An Emerging Data Chasm
R Khera, KB Dorsey, and HM Krumholz

A Piece of My Mind

135 On Breaking Bad News
W Klyce

Editorial

137 Evaluating Health Technology Through Pragmatic Trials: Novel Approaches to Generate High-Quality Evidence
ED Peterson and RA Harrington

139 Screening for Atrial Fibrillation With a Wearable Device
BA Steinberg and JP Piccini

141 Intravenous Alteplase for Mild Nondisabling Acute Ischemic Stroke: A Bridge Too Far?
WJ Powers

143 Ankle-Brachial Index Screening and Improving Peripheral Artery Disease Detection and Outcomes
MM McDermott and MH Criqui

LETTERS

Research Letter

200 Testosterone Prescribing in the United States, 2002-2016
J Baillargeon and Coauthors

Comment & Response

202 Low-Fat vs Low-Carbohydrate Diets and Weight Loss

204 Importance of Intelligence and Emotional Intelligence for Physicians

135 YEARS

OF CONTINUOUS
PUBLICATION

Editor in Chief
Howard Bauchner, MD

Clinical Review & Education

RECOMMENDATION STATEMENT

Screening for PAD With the Ankle-Brachial Index 177

The risk of peripheral artery disease (PAD) is often assessed with the ankle-brachial index, which is calculated as systolic blood pressure at the ankle divided by systolic blood pressure at the brachial artery while the patient is lying down. This US Preventive Services Task Force statement concludes that the current evidence is insufficient to assess the balance of benefits and harms of screening for peripheral artery disease and cardiovascular disease risk with the ankle-brachial index. In an Editorial, McDermott and Criqui emphasize that the US Preventive Services Task Force recommendation applies to individuals without signs or symptoms of disease, and that patients who report ischemic symptoms while walking should be tested with the ankle-brachial index.

📺 Editorial 143 Related Article 184 JAMA Patient Page 212

🎧 Author Audio Interview jama.com CME jamanetwork.com/learning

EVIDENCE REPORT

Outcomes of Screening for Peripheral Artery Disease 184

In a review of 5 studies with 5864 participants, Guirguis-Blake and colleagues found no direct evidence and limited indirect evidence on the benefits of screening for peripheral artery disease with the ankle-brachial index in unselected or asymptomatic populations.

📺 Editorial 143 Related Article 177 JAMA Patient Page 212

A Man With Progressive Weakness and Anemia 197



This JAMA Clinical Challenge by DeFilippis and colleagues presents a 61-year-old man with progressive weakness, cognitive impairment, and macrocytic anemia. What would you do next?

📺 Online @ jama.com



Editor's Audio Summary

Howard Bauchner, MD, summarizes and comments on this week's issue.

Author Interview



AUDIO Michael J. Barry, MD, author of "Screening for Peripheral Artery Disease and Cardiovascular Disease Risk Assessment With the Ankle-Brachial Index: US Preventive Services Task Force Recommendation Statement"

Animated Summary Video



Effect of a Wearable ECG Patch on Detection of Atrial Fibrillation

Online First Articles

Visit jamanetwork.com/journals/jama/newonline for just-published opinion pieces and Medical News features.

Screening for Peripheral Artery Disease (PAD) With Ankle-Brachial Index



Adults



Statement

JAMA Patient Page

212 Screening for Peripheral Artery Disease With Ankle-Brachial Index

NEWS & ANALYSIS

Medical News & Perspectives

123 New Foundation Revives Debate About Health Research Funded by Big Tobacco

125 The JAMA Forum

New Ebola Outbreak in Africa Is a Major Test for the WHO

127 Biotech Innovations

Oral Sodium Sensor for Hypertension Management

Immunotherapy Leads to Complete Regression in Late-Stage Breast Cancer

128 News From the CDC

Stroke Rehab Lacking Pool-Related Infections

Departments

113 Staff Listing

199 CME Questions

209 Classified Advertising

210 Journal Advertiser Index

211 Contact Information

Instructions for Authors

jama.com/public/instructionsforauthors.aspx