

Research

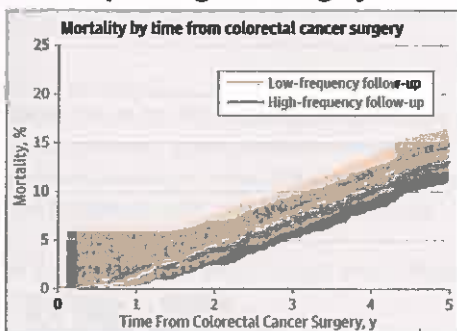
Vitamin D Supplementation and Recurrent Wheezing 2086

Black infants experience high rates of prematurity and prematurity-associated wheezing. Hibbs and colleagues randomized 300 black infants born preterm and found that sustained supplementation with vitamin D, compared with diet-limited supplementation, resulted in a reduced risk of recurrent wheezing. In an Editorial, Greer notes that vitamin D trials have had inconsistent results and suggests that long-term follow-up of these trials would be informative for the development of practice guidelines.

Editorial 2081

CME jamanetwork.com/learning

Follow-up Testing After Surgery for Colorectal Cancer 2095



Intensive follow-up of patients after curative surgery for colorectal cancer is common in clinical practice, but evidence of a survival benefit is limited. Wille-Jørgensen and colleagues for the COLOFOL Study Group randomized 2509 patients after curative surgery for stage II or III colorectal cancer and found that more frequent follow-up with computerized tomography and carcinoembryonic antigen testing did

not reduce total or cancer-specific mortality. In an Editorial, Sanoff concludes that imaging and carcinoembryonic antigen testing more than once a year does little to improve survival.

Editorial 2083 Related Article 2104

CME jamanetwork.com/learning

Posttreatment Testing and Recurrence of Colorectal Cancer 2104

After completion of definitive treatment for stage I-III colorectal cancer, surveillance is recommended for the detection of recurrent disease or a second primary cancer. In a retrospective cohort study of 8529 patients with colorectal cancer at 1175 accredited treatment facilities, Snyder and colleagues found that surveillance intensity was not associated with detection of recurrence.

Editorial 2083 Related Article 2095



Humanities

Poetry and Medicine

2139 Unmantling
CS Halberstadt

JAMA Revisited

2140 The Pomelo, or Grapefruit

Opinion

Viewpoint

2071 The Neurobiology of Opioid Addiction and the Potential for Prevention Strategies
G Peltz and TC Südhof

2073 Increasing Naloxone Awareness and Use: The Role of Health Care Practitioners
JM Adams

2075 Behavioral Phenotyping in Health Promotion: Embracing or Avoiding Failure
S Kangovi and DA Asch

2077 Risk Adjustment for Quality Measures Is Neither Binary nor Mandatory
RS Braithwaite

A Piece of My Mind

2079 Filling in the Gaps
MB Gamick

Editorial

2081 Prenatal vs Infant Vitamin D Supplementation and the Risk of Wheezing in Childhood
FR Greer

2083 Best Evidence Supports Annual Surveillance for Resected Colorectal Cancer
HK Sanoff

LETTERS

Research Letter

2132 Sources of Funding for Research in Evidence Reviews That Inform Recommendations of the US Preventive Services Task Force
J Villani and Coauthors

Comment & Response

2133 Air Pollution and Mortality in the Medicare Population

2136 Surgical Procedures for Patients With Severe Obesity

2137 Bundled Payments Initiative Participation and Retention

2138 Correction

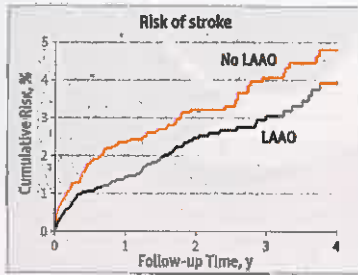
Editor in Chief
Howard Bauchner, MD

134 YEARS
OF CONTINUOUS
PUBLICATION

Research (continued)

Surgical Occlusion of the Left Atrial Appendage

2116



Risk factors for stroke include atrial fibrillation and thrombi in the left atrial appendage. Yao and colleagues conducted a retrospective cohort study of 75 782 cardiac surgery patients and found that surgical occlusion of the left atrial appendage was associated with a lower risk of subsequent stroke and all-cause mortality.

■ CME jamanetwork.com/learning

Clinical Review & Education

CLINICAL UPDATE

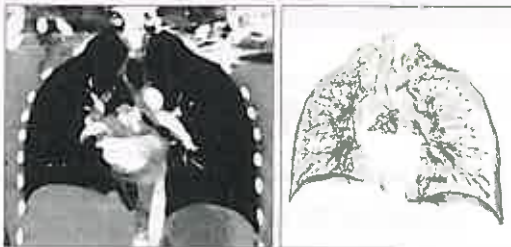
Indications for Percutaneous Coronary Intervention

2127

Recent advances in percutaneous coronary intervention have improved the utility of this common procedure. In this JAMA Insights article, Bhatt discusses evidence-based therapies for patients with coronary artery stenosis.

A Young Woman With Cough and Lithoptysis

2129



This JAMA Clinical Challenge by de Lima and colleagues presents a 28-year-old woman with dyspnea, cough, and expectoration of calcific material. What would you do next?



JAMA Patient Page

2146 Small Bowel Obstruction

NEWS & ANALYSIS

Medical News & Perspectives

2064 Is Direct Primary Care a Game Changer?

2066 Taking a Closer Look at the Biomarker Test for Mild Traumatic Brain Injury

2068 Health Agencies Update
GAO Calls for Coordinated Efforts to Detect Arsenic in Rice

Factors Linked to Depression in Sexual Minority Youth

Surgeon General Urges Expanded Availability of Naloxone

2069 Clinical Trials Update
Hypertension Management in Barbershops

Tai Chi for Fibromyalgia

Drug Slows Disability Progression in Multiple Sclerosis

Peer Counselors for Formerly Incarcerated People With HIV

Carvedilol During Chemotherapy

2070 News From the CDC

Evolution of "Nightmare Bacteria"

Postdisaster Pharmacy Needs

Online @ jama.com



Editor's Audio Summary

Howard Bauchner, MD, summarizes and comments on this week's issue.

Just Published

Read the latest Viewpoints and research presented at important clinical meetings published online first at jamanetwork.com/journals/jama/newonline.

CME Credit

Earn CME credit by reading CME-designated articles in this issue and taking the quiz online. CME quizzes are available by topic, by date, and by US state requirements at jamanetwork.com/learning.

Opioid Use and Addiction

A collection of JAMA Network articles about opioids is available at sites.jamanetwork.com/opioids/.

Departments

2061 Staff Listing

2131 CME Questions

2141 Classified Advertising

2143 Journal Advertiser Index

2145 Contact Information

Instructions for Authors

jama.com/public/Instructionsforauthors.aspx