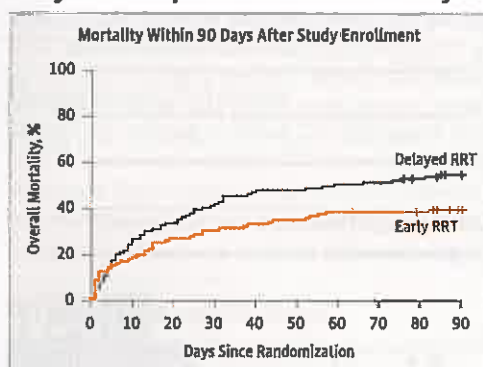


Research

Endobronchial Coil Treatment, Exercise Tolerance in Emphysema 2178

Endobronchial coils compress emphysematous lung tissue and may improve lung function and exercise tolerance in patients with emphysema. In a multicenter randomized trial involving 315 patients with emphysema and severe hyperinflation, Sciruba and colleagues found that compared with guideline-based usual care alone, endobronchial coil treatment added to usual care resulted in a modest improvement in exercise tolerance that was of uncertain clinical significance. Major complications were more common among patients receiving coil treatment.

Early Renal Replacement and Mortality in Acute Kidney Injury 2190



To assess the optimal timing of initiation of renal replacement therapy (RRT) among critically ill patients with acute kidney injury, Zarbock and colleagues randomly assigned 231 such patients to either early (≤ 8 hours of diagnosis of kidney disease: Improving Global Outcomes [KDIGO] stage 2) or delayed (≤ 12 hours of KDIGO stage 3 or not at all) initiation of RRT. The authors found early initiation of RRT compared with delayed

initiation reduced mortality over the first 90 days after randomization. In an Editorial, Chertow and Winkelmayer discuss the need for additional investigation of the optimal timing of dialytic support in critically ill patients.

Editorial 2171

Continuing Medical Education jamanetworkcme.com

Sodium Excretion and CVD Risk in Chronic Kidney Disease 2200

The relationship between dietary sodium intake and incident cardiovascular disease (CVD) among patients with chronic kidney disease is not known. In a prospective cohort of 3757 patients with chronic kidney disease, Mills and colleagues found that higher urinary sodium excretion was associated with increased risk of CVD. In an Editorial, Powe and Bibbins-Domingo discuss dietary sodium intake and cardiovascular health among patients with chronic kidney disease.

Editorial 2173 JAMA Patient Page 2248

Continuing Medical Education jamanetworkcme.com



Humanities

The Art of JAMA

2150 *A Rock on the Lukenia Hills, 1926*
William R. Leigh (1866-1955)

Poetry and Medicine

2238 Memorial Day

JAMA Revisited

2239 Science and Practical
Common Sense

Opinion

Viewpoint

2163 Development and Implementation of Expected Practices to Reduce Inappropriate Variations in Clinical Practice
SM Soni, P Giboney, and HF Yee Jr

2165 A Stronger Treatment System for Opioid Use Disorders
B Saloner and J Shafstein

2167 Measurement of the Patient Experience: Clarifying Facts, Myths, and Approaches

L Tefera, WG Lehman, and P Conway

A Piece of My Mind

2169 Black Lives

J O'Connor

Editorial

2171 Early to Dialyze: Healthy and Wise?
GM Chertow and WC Winkelmayer

2173 Dietary Salt, Kidney Disease, and Cardiovascular Health
NR Powe and K Bibbins-Domingo

2175 Can Walkable Urban Design Play a Role in Reducing the Incidence of Obesity-Related Conditions?
AG Rundle and SB Heymsfield

LETTERS

Research Letter

2230 Treatment Indications for Antidepressants Prescribed in Primary Care in Quebec, Canada, 2006-2015
J Wong and Coauthors

Comment & Response

2232 Risk of Anaphylaxis Associated With Intravenous Iron Products

2233 Intended vs Reported Scope of Practice

2235 Pimping as a Practice in Medical Education

2237 Correction

Editor In Chief
Howard Bauchner, MD

132 YEARS
OF CONTINUOUS
PUBLICATION

Research (continued)

Neighborhood Walkability, Body Weight, and Diabetes 2211

To assess whether walkable neighborhoods can mitigate increasing rates of obesity-related diseases, Creatore and colleagues analyzed 2001 to 2012 administrative health care and Canadian Community Health Survey data from adult residents of 15 municipalities in Ontario, Canada. The authors found that urban neighborhoods characterized by a more walkable design were associated with decreased prevalence of overweight and obesity and decreased incidence of diabetes. In an Editorial, Rundle and Heymsfield discuss the role of urban design in reducing the incidence of obesity-related conditions.

✚ Editorial 2175

✚ Author Video Interview jama.com Continuing Medical Education jamanetworkcme.com

Clinical Review & Education

Management of Tinnitus 2221

Tinnitus is a common condition that affects an estimated 50 million US adults. This JAMA Clinical Guidelines Synopsis article summarizes the American Academy of Otolaryngology–Head and Neck Surgery clinical practice guideline on tinnitus. Most patients who seek treatment for tinnitus have no underlying medical cause. Routine imaging is not recommended. Good evidence supports cognitive behavioral therapy as a treatment modality.

Persistent Rash and Alopecia 2223



A patient who had undergone resection of an appendiceal adenocarcinoma presented with a 4-month history of a rash and alopecia that began on his face and spread to the scalp, axilla, and groin. There was no response to oral fluconazole, topical antibiotic ointment, or intravenous antibiotics. The patient had a colostomy and had required total parenteral nutrition for the past year. What would you do next?

Interpretation of Elevated Hemoglobin or Hematocrit Levels 2225

A 71-year-old woman presented for evaluation of higher than normal hemoglobin and hematocrit levels. A serum erythropoietin level was low-normal (5.1 IU/L; reference range, 4.0–21.0 IU/L). The patient reported recent fatigue and night sweats but no family history of blood disorders. How would you interpret the test results?

Online @ jama.com



Editor's Audio Summary

Phil B. Fontanarosa, MD, summarizes and comments on this week's issue.

JAMA Cardiology

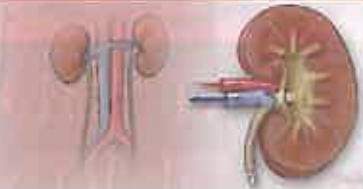
The JAMA Network welcomes *JAMA Cardiology* to the family of journals. cardiology.jamanetwork.com

Author Interview

VIDEO: Interview with Gillian L. Booth, MD, author of "Association of Neighborhood Walkability With Change in Overweight, Obesity, and Diabetes"

The JAMA Forum

Insightful commentary on the political aspects of health care from leading health economists, health policy experts, and legal scholars.



JAMA Patient Page

2248 Chronic Kidney Disease

NEWS & ANALYSIS

Medical News & Perspectives

2154 More Women With Breast Cancer Opt for Bilateral Mastectomy Despite Lack of Survival Benefit

The JAMA Forum

2156 Reports of Obamacare's Demise Are Greatly Exaggerated

2158 Health Agencies Update

Single Question Can Identify Youth at Risk for Alcohol Use Disorder

EPA Awards Climate Change Air Quality Grants

National Institutes of Health Awards Vaccine Adjuvant Grants

2159 Clinical Trials Update

Gene Transfer Improves Heart Function in Patients With Heart Failure

Best Way to Quit Smoking: Cold Turkey

CABG Delivers Survival Benefit in Ischemic Cardiomyopathy

2160 News From the CDC

Sleepy Teens Take More Risks

Students' Shifting Tobacco Habits

Departments

2147 Staff Listing

2227 CME Questions

2240 JAMA Network Abstracts

2243 Classified Advertising

2246 Journal Advertiser Index

2247 Contact Information

Instructions for Authors

jama.com/public/Instructionsforauthors.aspx