

Research

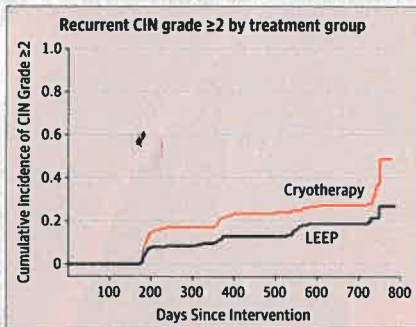
Fluoxetine for Obsessive-Compulsive Behaviors 1561

Autism spectrum disorders are characterized, in part, by restricted and repetitive behaviors that can interfere with everyday functioning. Reddihough and colleagues randomized 146 children and adolescents with autism spectrum disorder and found that fluoxetine, compared with placebo, resulted in significantly lower scores for obsessive-compulsive behaviors at 16 weeks. In an Editorial, King emphasizes that unwelcome repetitive behaviors should be differentiated from repetitive behaviors that may be adaptive or pleasurable.

Editorial 1557

Visual Abstract jama.com CME jamanetwork.com/learning

Treatment of Cervical Intraepithelial Neoplasia 1570



For women in resource-limited settings who have cervical intraepithelial neoplasia (CIN) and HIV, cryotherapy is a feasible treatment option, but it may be less effective than the loop electrosurgical excision procedure (LEEP). Greene and colleagues randomized 400 women with histologically confirmed CIN and HIV infection and found that treatment with LEEP, compared with cryotherapy, resulted in a lower rate of cervical neoplasia recurrence

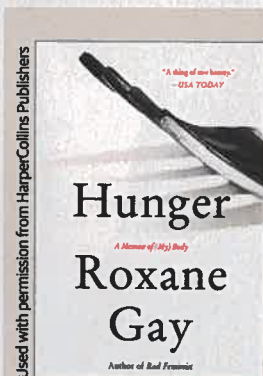
over 24 months. In an Editorial, Chibwesa and Stringer suggest that the findings from this study, when combined with other research, position LEEP as the preferred treatment for CIN2/3 among women living with HIV in settings that can safely perform the procedure, but also point out that its role as first-line treatment for cervical precancer in low- and middle-income countries will likely remain limited in the near term.

Editorial 1558

Preterm Birth and Adult Health 1580

In developed countries, more than 95% of infants born preterm survive into adulthood. Crump and colleagues conducted a national cohort study of 2 566 699 persons born in Sweden between 1973 and 1997 and found that most preterm infants survived to early to mid-adulthood without major comorbidities.

CME jamanetwork.com/learning



Humanities

The Arts and Medicine

1534 Heavy Hunger—Managing Weight and Obesity in Black American Communities
TL Carson

Poetry and Medicine

1614 After Aleppo
J Franklin

JAMA Revisited

1615 Tuberculosis in Health Resorts for the Tuberculous; Industrial Tuberculosis Experience in 1918

Opinion

Viewpoint

1547 Can Plant-Based Meat Alternatives Be Part of a Healthy and Sustainable Diet?
FB Hu, BO Otis, and G McCarthy

1549 Improving the Quality of Dietary Research
DS Ludwig, CB Ebbeling, and SB Heymsfield

1551 Primary Care Selection: A Building Block for Value-Based Health Care
S Heiser, PH Conway, and R Rajkumar

1553 Pay-to-Participate Trials and Vulnerabilities in Research Ethics Oversight
H Fernandez Lynch and S Joffe

A Piece of My Mind

1555 You Did Not Teach Me What You Thought You Did
MA Carlson

Editorial

1557 Fluoxetine and Repetitive Behaviors in Children and Adolescents With Autism Spectrum Disorder
BH King

1558 Cervical Cancer as a Global Concern: Contributions of the Dual Epidemics of HPV and HIV
CJ Chibwesa and JSA Stringer

LETTERS

Research Letter

1605 Association Between Limited English Proficiency and Revisits and Readmissions After Hospitalization for Patients With Acute and Chronic Conditions in Toronto, Ontario, Canada
S Rawal and Coauthors

Comment & Response

1607 P2Y12 Inhibitor Monotherapy vs Dual Antiplatelet Therapy After Percutaneous Coronary Intervention

1608 Antihypertensive Medication Use in Older Adults at Risk for Hip Fracture

1609 FEV₁-FVC Thresholds for Defining Chronic Obstructive Pulmonary Disease



Editor in Chief
Howard Bauchner, MD

136 YEARS
OF CONTINUOUS
PUBLICATION

Clinical Review & Education

Management of Dementia

1589

Dementia is an acquired loss of cognition in multiple cognitive domains sufficiently severe to affect social or occupational function. Arvanitakis and colleagues review the evaluation and clinical management of patients with signs and symptoms of dementia.

CLINICAL UPDATE

Management of Lactose Intolerance

1600

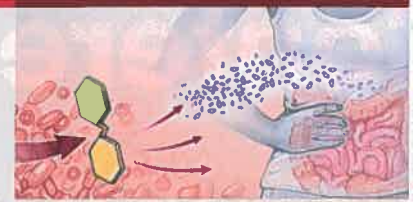
Symptoms of lactose malabsorption result from fluid shifts into the intestinal lumen and fermentation of residual lactose by gastrointestinal bacteria. This JAMA Insights article by Micic and colleagues discusses the pathophysiology and clinical management of patients with lactose intolerance.

 JAMA Patient Page 1620

Prevention and Management of Venous Thromboembolism

1602

In this JAMA Clinical Guidelines Synopsis of a 2018 guideline developed by the American Society of Hematology and the McMaster University GRADE Centre, Paul and Cifu discuss the prophylaxis and treatment of venous thromboembolism.



JAMA Patient Page

1620 Lactose Intolerance

NEWS & ANALYSIS

Medical News & Perspectives

1537 Subconcussive Football Hits May Leave a Telltale Signature of Brain Damage

1539 Matters of the Mind: Honest Placebos, Hostility and Heart Attacks, and Sleepless Nights

The JAMA Forum

1540 The San Francisco Ban and the Future of e-Cigarettes

JAMA Infographic

1542 Global Trends in Type 2 Diabetes, 2007-2017

1543 Health Agencies Update

Many Children, Adolescents Not Getting Medicaid-Covered Screenings

Air Pollution and Preterm Birth Risk in Second Pregnancy

Use of Illicit Drugs Continues to Rise

1544 Clinical Trials Update

Counseling Reduces Physician Burnout

Experimental Chlamydia Vaccine Shows Promise

Occupational Intervention Unnecessary to Treat Back Pain

Esketamine Prevents Treatment-Resistant Depression Relapse

Diabetes, Prior PCI, and Dual Antiplatelet Therapy

1545 News From the CDC

Measles Outpatient Prevention

Disparities in Maternal Mortality

Departments

1531 Staff Listing

1604 CME Questions

1616 Recruitment Advertising

1618 Journal Advertiser Index

1619 Contact Information

Instructions for Authors

jama.com/public/instructionsforauthors.aspx

Online @ jama.com



Editor's Audio Summary

Jody W. Zylke, MD, summarizes and comments on this week's issue.

Author Audio Interview



Frank B. Hu, MD, PhD, author of "Can Plant-Based Meat Alternatives Be Part of a Healthy and Sustainable Diet?"

Audio

JAMA Medical News Roundup: October 2019



Visual Abstract

"Effect of Cryotherapy vs Loop Electrosurgical Excision Procedure on Cervical Disease Recurrence Among Women with HIV and High-Grade Cervical Lesions in Kenya: A Randomized Clinical Trial"

Visual Abstract

"Effect of Fluoxetine on Obsessive-Compulsive Behaviors in Children and Adolescents With Autism Spectrum Disorders: A Randomized Clinical Trial"

Audio

Ketamine Tips for New Docs

JAMA Network Conferences

The JAMA Network attends or hosts a variety of conferences. View articles published to coincide with presentations, curated articles of relevance to a meeting, videos, and other materials at <https://jamanetwork.com/pages/conferences>