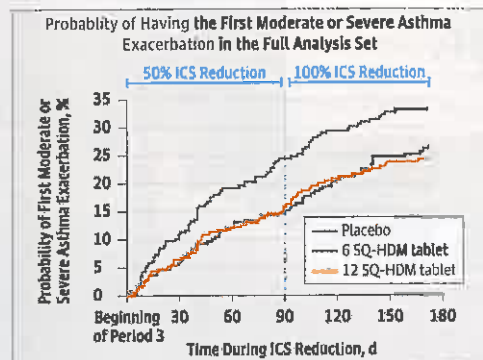


## Research

### House Dust Mite Immunotherapy in Adults With Allergic Asthma 1715



House dust mite (HDM) sensitization is present in many patients with asthma. In a randomized placebo-controlled study that enrolled 834 adults with HDM allergy and asthma not well-controlled by inhaled corticosteroids (ICS), Virchow and colleagues found that the addition of an HDM sublingual allergy immunotherapy tablet to asthma maintenance medications improved time to first asthma exacerbation during a period of inhaled corticosteroid reduction. In an Editorial, Wood discusses advances in allergen immunotherapy.

✎ Editorial 1711

✎ Continuing Medical Education [jamanetworkcme.com](http://jamanetworkcme.com)

### Rotating Night Shift Work and Risk of CHD Among Women 1726

Studies linking shift work to coronary heart disease (CHD) have yielded inconsistent results. Vetter and colleagues assessed the relationship between rotating night shift work—defined as 3 or more night shifts per month plus day and evening shifts—and incident CHD in 2 prospective cohorts of female registered nurses (189 158 women from both studies) who were followed up for 24 years. The authors found that increasing years of rotating night shift work was associated with a statistically significant but small absolute increase in CHD risk.

✎ Author Video Interview [jama.com](http://jama.com)

### Prediction Rule for Dual Antiplatelet Therapy After PCI 1735

Yeh and colleagues report results of a study to develop a clinical prediction score to identify patients expected to derive benefit or harm from continuation of dual antiplatelet therapy for more than 1 year after percutaneous coronary intervention (PCI). The prediction rule was developed and externally validated in analyses of data from clinical trials of PCI with stent placement (development cohort, 11 648 patients; validation cohort, 8136 patients). The authors found the prediction rule had modest accuracy in identifying patients with greater expected benefit vs expected harm from extended dual antiplatelet therapy. In an Editorial, Pencina and Peterson discuss use of predictive models in clinical medicine.

✎ Editorial 1713



## Humanities

### The Art of JAMA

1696 *Truncated View of the Broekzijder Mill on the Gein, Wings Facing West*, circa 1902-1903  
Piet Mondrian (1872-1944)

### Poetry and Medicine

1795 unexpected

### JAMA Revisited

1796 Public Health Laboratories

## Opinion

### Viewpoint

1697 Digital Health and Patient Safety  
SO Agbooba, DW Bates, and JC Kvedar

1699 Trustees of Nonprofit Health Care Organizations: Whom Do They Serve?

MS Jellinek

### A Piece of My Mind

1701 The Patient You Least Want to See  
JH Chen

### Editorial

1703 On Death and Money: History, Facts, and Explanations  
A Deaton

1706 The Good Life: Working Together to Promote Opportunity and Improve Population Health and Well-being  
SH Woolf and JQ Purnell

1709 Income, Life Expectancy, and Community Health: Underscoring the Opportunity  
JM McGinnis

1711 New Horizons in Allergen Immunotherapy  
RA Wood

1713 Moving From Clinical Trials to Precision Medicine: The Role for Predictive Modeling  
MJ Pencina and ED Peterson

## LETTERS

### Research Letter

1784 Breast Cancer Screening Using Tomosynthesis and Digital Mammography in Dense and Nondense Breasts  
EA Rafferty and Coauthors

1786 Content, Readability, and Understandability of Dense Breast Notifications by State  
NR Kressin, CM Gunn, and TA Battaglia

### Comment & Response

1788 TP53 Gene and Cancer Resistance in Elephants

1791 Mechanical Thrombectomy and Functional Outcomes After Stroke

1793 Conflict or Confluence of Interest?

1794 Correction

**132 YEARS**  
OF CONTINUOUS  
PUBLICATION

Editor in Chief  
Howard Bauchner, MD

## Clinical Review & Education

### Income and Life Expectancy in the United States, 2001-2014 1750

In an analysis of 1.4 billion de-identified tax records and Social Security Administration death records, Chetty and colleagues found that between 2001 and 2014, higher income was associated with greater longevity throughout the income distribution, with substantial variation across geographic areas. Differences in life expectancy across income groups increased during this period. Three Editorials discuss income inequality, social and community determinants of health, and interventions to improve quality of life and life expectancy.

📺 Editorial 1703, 1706, and 1709

🎧 Author Audio Interview [jama.com](http://jama.com)

### Diagnosis, Treatment, and Prevention of Tick-Borne Infections 1767

Based on a review of 361 articles published in 2005 through 2015, Sanchez and colleagues summarize the evidence relating to the diagnosis, treatment, and prevention of 3 tick-borne infections: Lyme disease, human granulocytic anaplasmosis, and babesiosis. The authors found that recent evidence supports a 10-day course of oral doxycycline for treatment of erythema migrans and a 14-day course to treat early neurologic Lyme disease in ambulatory patients.

📺 Related Article 1780

🎧 Author Audio Interview [jama.com](http://jama.com) Continuing Medical Education [jamanetworkcme.com](http://jamanetworkcme.com)

### Association of Body Fat Distribution With Diabetic Retinopathy 1778

An article in *JAMA Ophthalmology* reported that among Asian patients with type 2 diabetes, a higher body mass index appeared to have a protective effect on diabetic retinopathy, while a higher waist-to-hip ratio was associated with the presence and severity of retinopathy in women. In this From The JAMA Network article, Klein and Klein discuss the relationship between body fat distribution and diabetic retinopathy.

### Serologic Testing in Patient With Suspected Erythema Migrans 1780

A pediatrician was consulted for evaluation of a painless, annular skin lesion—attributed to a “bug bite”—that had enlarged and then cleared centrally over several weeks’ time. Some fading occurred after parental application of over-the-counter antifungal cream. Concerned about a possible arthropod bite, the pediatrician ordered serologic testing for Lyme disease and prescribed doxycycline. How would you interpret the test results?

📺 Related Article 1767

## 📺 Online @ [jama.com](http://jama.com)



### Editor's Audio Summary

Howard Bauchner, MD, summarizes and comments on this week's issue.

### Author Interview

📺 Interview with Celine Vetter, PhD, MSc, author of “Association Between Rotating Night Shift Work and Risk of Coronary Heart Disease Among Women”

AUDIO Interview with Raj Chetty, PhD, author of “The Association Between Income and Life Expectancy in the United States, 2001-2014”

AUDIO Interview with Angus Deaton, PhD, author of “On Death and Money: History, Facts, and Explanations”

AUDIO Interview with Linden T. Hu, MD, author of “Diagnosis, Treatment, and Prevention of Lyme Disease, Human Granulocytic Anaplasmosis, and Babesiosis: A Review”

## USPSTF Recommendation Grades



### JAMA Patient Page

1804 The US Preventive Services Task Force

## NEWS & ANALYSIS

### Medical News & Perspectives

1689 Tale of 2 Agencies: CDC Avoids Gun Violence Research but NIH Funds It

### 1692 Health Agencies Update

Liver Cancer Death Rate Increases as Overall Cancer Deaths Decline

HHS Awards \$94-Million to Treat Opioid Use Disorders

Vendors and Stakeholders Commit to Improving Health Information Flow

### 1693 Clinical Trials Update

Mind-Body Program Helps Back Pain but Not Function

Allergenic Diet in Early Infancy May Not Prevent Food Allergies

Reducing Unnecessary Antibiotic Prescriptions

### 1694 News From the CDC

Mixed News on Hospital Infections

Preventing Kids' Mental and Developmental Problems

## Departments

1683 Staff Listing

1782 CME Questions

1797 JAMA Network Abstracts

1799 Classified Advertising

1801 Journal Advertiser Index

1803 Contact Information

## Instructions for Authors

[jama.com/public/Instructionsforauthors.aspx](http://jama.com/public/Instructionsforauthors.aspx)