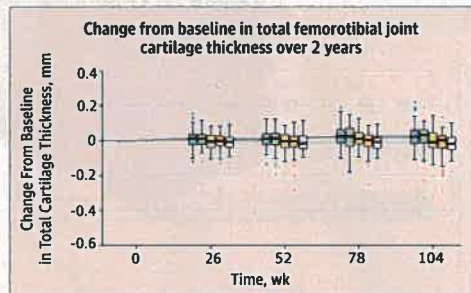


Research

Intra-articular Sprifermin for Osteoarthritis

1360



Articular cartilage loss is a measure of structural disease progression in osteoarthritis. Hochberg and colleagues randomized 549 participants with symptomatic radiographic knee osteoarthritis and found that intra-articular sprifermin improved total femorotibial joint cartilage thickness after 2 years.

Visual Abstract jama.com CME jamanetwork.com/learning

Self-management Support for Patients Hospitalized With COPD

1371

Studies of self-management support for outpatients with chronic obstructive pulmonary disease (COPD) have demonstrated improvements in health-related quality of life and reductions in COPD-related acute care events. Aboumatar and colleagues randomized 240 hospital patients with COPD and found that a 3-month program of support for transition and long-term self-management resulted in significantly greater COPD-related hospitalizations and emergency department visits, without improvement in quality of life. In an Editorial, Rinne and colleagues suggest that safe interventions are still needed to prevent COPD hospitalizations.

Editorial 1357 Editor's Note 1380
CME jamanetwork.com/learning

Genetic Variants and Lifetime Risk of Cardiovascular Disease

1381

The benefits of reductions in systolic blood pressure and low-density lipoprotein cholesterol may be cumulative. Ference and colleagues analyzed data for 438 952 participants and found that lifelong genetic exposure to lower levels of systolic blood pressure and low-density lipoprotein cholesterol were associated with lower cardiovascular risk.

Author Audio Interview jama.com

Opinion

Viewpoint

1345 Communication Strategies for Sharing Prognostic Information With Patients
J Paladino, JR Lakin, and JJ Sanders

1347 The Law and Ethics of Fetal Burial Requirements for Reproductive Health Care
D Fox, IG Cohen, and EY Adashi

1349 Will Increasing Primary Care Spending Alone Save Money?
Z Song and S Gondi

1351 Making Machine Learning Models Clinically Useful
NH Shah, A Milstein, and SC Bagley

A Piece of My Mind

1353 Into the Well
C Wendt

Editorial

1355 Cerebellar Intracerebral Hemorrhage: Time for Evidence-Based Treatment
JC Hemphill III and S Amin-Hanjani

1357 Unexpected Harm From an Intensive COPD Intervention
ST Rinne, PK Lindenauer, and DH Au

Editor's Note

1380 Ensuring an Accurate Scientific Record—Retraction and Republication
H Bauchner and RM Golub

LETTERS

Research Letter

1409 Exercise Heat Stress in Patients With and Without Type 2 Diabetes
SR Notley and Coauthors

1411 A Preliminary Study of the Effect of Dousing and Foot Immersion on Cardiovascular and Thermal Responses to Extreme Heat
NB Morris and Coauthors

Comment & Response

1413 Issues in the Adoption of Robotic Surgery

1415 Exercise to Prevent Falls in Older Adults

1416 Identifying Sepsis Phenotypes

1417 Notice of Retraction

1418 Correction

Editor in Chief
Howard Bauchner, MD

136 YEARS
OF CONTINUOUS
PUBLICATION



Humanities

The Arts and Medicine
1336 Uncomplicated Arthroplasty—
an Artist's Perspective
F McGuire

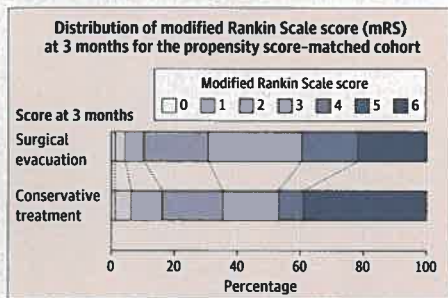
Poetry and Medicine
1421 Cerulean
S Pretti

JAMA Revisited
1422 Peter Mark Roget (1779-1869):
Roget's Thesaurus

Research (continued)

Hematoma Evacuation for Cerebellar Hemorrhage

1392



Surgical evacuation of hematoma is a standard treatment for patients with intracerebral hemorrhage. Kuramatsu and colleagues analyzed data for 578 patients with cerebellar intracerebral hemorrhage and found that surgical hematoma evacuation, compared with conservative treatment, was not associated with improved functional outcome. In an Editorial, Hemphill and

Amin-Hanjani recommend further research to identify patients with brain tissue viability who may benefit from surgical intervention.

Editorial 1355

Clinical Review & Education

Diagnostic Testing for Diabetes in Primary Care

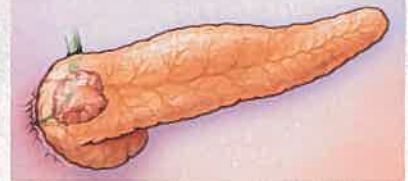
1404

This JAMA Diagnostic Test Interpretation article by O'Brien and Sacks presents a 57-year-old man who was noted at his initial primary care visit to have risk factors for diabetes. What would you do next?

Preventing Infections Transmitted by Mosquitoes and Ticks

1406

The use of repellents is recommended by the Centers for Disease Control and Prevention and the Environmental Protection Agency to prevent infections transmitted by mosquitoes and ticks. This Medical Letter on Drugs and Therapeutics discusses the efficacy and safety of topical insect and tick repellents.



JAMA Patient Page

1426 Pancreatic Cancer

NEWS & ANALYSIS

Medical News & Perspectives

1339 Finding the Right Words to Stop Cancer Screening in Older Adults

1340 In Hot, Humid Weather, Fans Benefit Health and Environment

The JAMA Forum

1341 Changing Minds in Health Policy

1343 Biotech Innovations

Intubation Guidance Tool Earns Top Prize

Cuffless Blood Pressure Monitoring

Gold Nanoshells Ablate Prostate Tumors

1344 News From the CDC

Multidrug-Resistant Salmonella

Mumps in Migrant Detention Centers

Online @ jama.com



Editor's Audio Summary

Howard Bauchner, MD, summarizes and comments on this week's issue.

Author Audio Interview



Joanna Paladino, MD, author of "Communication Strategies for Sharing Prognostic Information With Patients: Beyond Survival Statistics"

Author Audio Interview



Timothy Donahue, MD, author of "Pancreatic Cancer"

Author Audio Interview



Brian A. Ference, MD, MPhil, MSc, author of "Association of Genetic Variants Related to Combined Exposure to Lower Low-Density Lipoproteins and Lower Systolic Blood Pressure With Lifetime Risk of Cardiovascular Disease"

Visual Abstract

"Effect of Intra-articular Sprifermin vs Placebo on Femorotibial Joint Cartilage Thickness in Patients With Osteoarthritis: The FORWARD Randomized Clinical Trial"

Departments

1333 Staff Listing

1408 CME Questions

1423 Recruitment Advertising

1424 Journal Advertiser Index

1425 Contact Information

Instructions for Authors

jama.com/public/instructionsforauthors.aspx