

Research

Catheter Ablation and Risk of Mortality or Disabling Stroke 1261

It is uncertain whether the risk of long-term mortality and stroke associated with atrial fibrillation (AF) can be mitigated by restoring sinus rhythm. Packer and colleagues for the CABANA Investigators randomized 2204 symptomatic patients with AF and found that catheter ablation, compared with medical therapy, did not reduce a composite end point of death, disabling stroke, serious bleeding, or cardiac arrest. In an Editorial, Albert and Bhatt suggest that patients who have disabling symptoms of AF may benefit from catheter ablation, but patients who choose drug therapy will also likely experience significant improvements in quality of life and have no worse risk for stroke or death.

📖 Editorial 1255 Related Article 1275
📺 Summary Video jama.com CME jamanetwork.com/learning

Catheter Ablation and Quality of Life 1275

Catheter ablation may be more effective than drug therapy for improving the quality of life of patients with atrial fibrillation (AF), but the durability of this benefit is uncertain. Mark and colleagues for the CABANA Investigators randomized 2204 symptomatic patients with AF and found that catheter ablation, compared with medical therapy, led to clinically important improvements in quality of life at 12 months.

📖 Editorial 1255 Related Article 1261
📺 Summary Video and Visual Abstract jama.com

Clinical Use of Amyloid Positron Emission Tomography 1286

Amyloid positron emission tomography (PET) can detect amyloid plaques in the brain, but it is uncertain whether this neuroimaging technique is associated with changes in clinical management. Rabinovici and colleagues conducted a multisite longitudinal study with 16 008 Medicare beneficiaries who had mild cognitive impairment or dementia of uncertain etiology and found that the use of amyloid PET was associated with changes in clinical management within 90 days. In an Editorial, Jack and Petersen note that an abnormal amyloid PET result is not diagnostic of Alzheimer disease, but it increases the likelihood that Alzheimer disease is present.

📖 Editorial 1258
📺 CME jamanetwork.com/learning

Opinion

Viewpoint

1247 The Surprisingly Positive Association Between Obesity and Cancer Immunotherapy Efficacy
WJ Murphy and DL Longo

1249 Reexamining Recommendations for Treatment of Hypercholesterolemia in Older Adults
N Skolnik

1251 Current and Future Challenges for Children Across the World
ZA Bhutta and RE Black

A Piece of My Mind

1253 What About Recovery
LM Buckley

Editorial

1255 Catheter Ablation for Atrial Fibrillation: Lessons Learned From CABANA
CM Albert and DL Bhatt

1258 Amyloid PET and Changes in Clinical Management for Patients With Cognitive Impairment
CR Jack Jr and RC Petersen

LETTERS

Research Letter

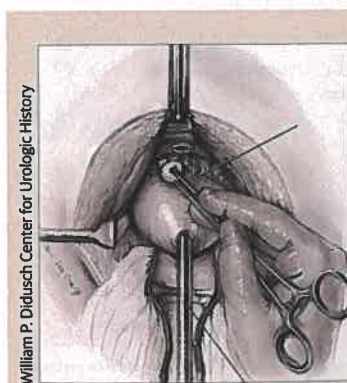
1309 Reported Cases of Medical Malpractice in Direct-to-Consumer Telemedicine
AL Fogel and JC Kvedar

Comment & Response

1310 Hypertension in Young Adults and Subsequent Cardiovascular Disease

1311 Tidal Volume Ventilation Strategy in ICU Patients Without ARDS

1313 Pharmacist-Led Education to Discontinue Inappropriate Prescribing



William P. D'Alusich Center for Urologic History

Humanities

The Arts and Medicine
1236 Artist, Rediscovered: Images and Ethics of Early Prostate Cancer Screening
LM Wyner

Poetry and Medicine
1315 Et mu
C McDonnell

JAMA Revisited
1316 Current Comment

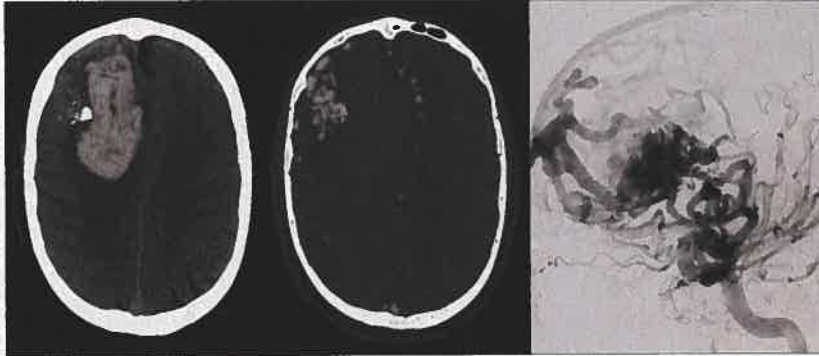
Editor in Chief
Howard Bauchner, MD

135 YEARS
OF CONTINUOUS
PUBLICATION

Clinical Review & Education

Cerebral Intraparenchymal Hemorrhage 1295

Most episodes of spontaneous intraparenchymal hemorrhage result from the rupture of damaged arteries or arterioles in patients with hypertension or cerebral amyloid angiopathy. Gross and colleagues review the medical and neurosurgical management of patients with intraparenchymal hemorrhage and its precursor lesions.



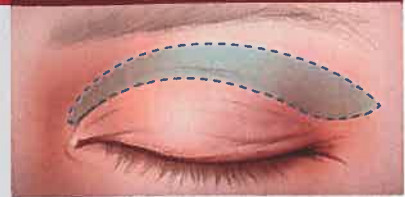
CME jamanetwork.com/learning

Expressing Incremental Changes in Study Outcomes 1304

In this JAMA Guide to Statistics and Methods, Norton and colleagues discuss the use of marginal effects to express the change in predicted probability that a study outcome will occur by each 1-unit change in a risk factor.

An Epinephrine Prefilled Syringe for Anaphylaxis 1306

Symjepi is a new epinephrine single-dose, prefilled syringe for the treatment of anaphylaxis. This Medical Letter on Drugs and Therapeutics compares Symjepi with epinephrine autoinjectors.



JAMA Patient Page

1320 Upper Blepharoplasty

NEWS & ANALYSIS

Medical News & Perspectives

1239 Why Do Hundreds of US Women Die Annually in Childbirth?

1241 Quick Uptakes: After Rotavirus Vaccine, Australia's Type 1 Diabetes Incidence Declines

The JAMA Forum

1242 The 6 Functions of Health Insurance

Bench to Bedside

1244 Studies Further Support Transmissibility of Alzheimer Disease-Associated Proteins

1245 News From the FDA

Higher Dose of Tofacitinib for Rheumatoid Arthritis Poses Risks

Collaboration Aims to Expedite Diagnostic Testing in Emergencies

Another Warning for Febricitis

Online @ jama.com



Editor's Audio Summary

Mary M. McDermott, MD, summarizes and comments on this week's issue.

Visual Abstract

"Effect of Catheter Ablation vs Medical Therapy on Quality of Life Among Patients With Atrial Fibrillation: The CABANA Randomized Clinical Trial"

Author Audio Interview



Neil Skolnik, MD, author of "Reexamining Recommendations for Treatment of Hypercholesterolemia in Older Adults"

Summary Video



Catheter Ablation vs Drug Therapy for Patients With Atrial Fibrillation: The CABANA Trial

Departments

1233 Staff Listing

1308 CME Questions

1317 Classified Advertising

1317 Journal Advertiser Index

1319 Contact Information

Instructions for Authors

jamanetwork.com/public/instructionsforauthors.aspx