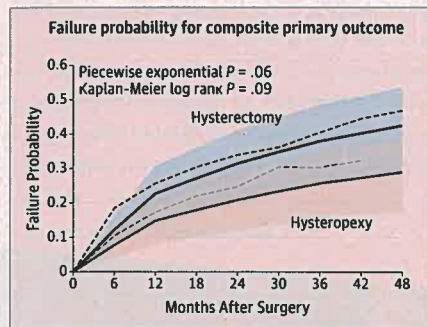


Research

Transvaginal Mesh Hysteropexy for Uterovaginal Prolapse 1054



Transvaginal mesh hysteropexy is an alternative to vaginal hysterectomy for the surgical treatment of uterovaginal prolapse. Nager and colleagues for the NICHD Pelvic Floor Disorders Network randomized 183 postmenopausal women with symptomatic uterovaginal prolapse and found that vaginal mesh hysteropexy, compared with vaginal hysterectomy with uterosacral ligament suspension, did not result in a significantly lower rate of the composite

prolapse outcome after 3 years. In an Editorial, Brincat discusses surgical therapies for uterovaginal prolapse and patient-centered assessments of treatment success.

Editorial 1047 Related Article 1066
CME jamanetwork.com/learning

Surgery and Pelvic Floor Muscle Therapy for Incontinence 1066

Women with mixed urinary incontinence (MUI) have symptoms of stress and urgency incontinence. Sung and colleagues randomized 480 women with MUI and found that midurethral sling surgery and behavioral and pelvic floor muscle therapy, compared with surgery alone, resulted in a small statistically significant difference in urinary incontinence symptoms at 12 months that did not meet the prespecified threshold for clinical importance. In an Editorial, Nygaard suggests that classifying MUI into more discrete subtypes may lead to recommendations for personalized clinical care.

Editorial 1049 Related Article 1054
CME jamanetwork.com/learning

Sacubitril-Valsartan vs Enalapril for Aortic Stiffness 1077

The cardiovascular benefits of sacubitril/valsartan for patients who have heart failure with reduced ejection fraction (HFrEF) may be related to central hemodynamics and cardiac remodeling. Desai and colleagues for the EVALUATE-HF Investigators randomized 464 participants with HFrEF and found that treatment with sacubitril/valsartan, compared with enalapril, did not significantly reduce central aortic stiffness. In an Editorial, Drazner suggests that this and other studies strongly support the effectiveness of angiotensin receptor-neprilysin inhibitor therapy for cardiac reverse remodeling in patients with HFrEF.

Editorial 1051 Related Article 1085



Humanities

Poetry and Medicine

1110 Dyshanasia
F Bovaro

JAMA Revisited

1111 Social Medicine, Medical Economics and Miscellany

Opinion

Viewpoint

1037 Screening for Social Determinants of Health: The Known and Unknown
KW Davidson and T McGinn

1039 Psychiatric Practice Patterns and Barriers to the Adoption of Esketamine
ST Wilkinson, DH Howard, and SH Busch

1041 Opioid Injection in Rural Areas of the United States: A Potential Obstacle to Ending the HIV Epidemic
AM Lerner and AS Fauci

1043 Reducing Pollution From the Health Care Industry
JD Sherman, A MacNeill, and C Thiel

A Piece of My Mind

1045 Who Heals the Healer?
H Farid

Editorial

1047 Pelvic Organ Prolapse: Reconsidering Treatment, Innovation, and Failure
CA Brincat

1049 Evidence-Based Treatment for Mixed Urinary Incontinence
IE Nygaard

1051 Angiotensin Receptor-Neprilysin Inhibition (ARNI) Therapy and Reverse Remodeling in Heart Failure With Reduced Ejection Fraction
MH Drazner

LETTERS

Research Letter

1101 Preventive Services Offered in Executive Physicals at Top-Ranked Hospitals
D Korenstein, M Mamoor, and PB Bach

Comment & Response

1103 Incorporating Intimate Partner Violence Interventions in Nurse Home Visitation Programs

1105 Catheter Ablation Compared With Drug Therapy for Atrial Fibrillation

1106 Optimal Gestational Weight Gain

1108 Correction



Editor in Chief
Howard Bauchner, MD

136 YEARS
OF CONTINUOUS
PUBLICATION

Research (continued)

N-Terminal Pro-B-Type Natriuretic Peptide and Cardiac Function 1085

Left ventricular remodeling is a mechanism of disease progression in patients who have heart failure with reduced ejection fraction; reduction in N-terminal pro-B-type natriuretic peptide (NT-proBNP) is associated with reverse left ventricular remodeling. Januzzi and colleagues for the PROVE-HF investigators analyzed data for 794 patients treated with sacubitril-valsartan and found that reduction in NT-proBNP concentration was weakly yet significantly correlated with improvements in markers of cardiac volume and function at 12 months.

[Editorial 1051](#) [Related Article 1077](#)

Clinical Review & Education

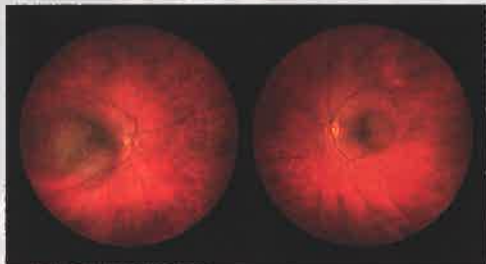
CLINICAL UPDATE

Recommended Immunizations for Adults and Adolescents 1096

Immunization guidelines are updated as new vaccines are developed and changes in host or agent susceptibility are observed. This JAMA Insights article by Sha discusses current recommendations for the routine immunization of adults and adolescents.

[Author Video Interview \[jama.com\]\(http://jama.com\)](#)

A Woman With Breast Cancer and Vision Loss 1098



This JAMA Clinical Challenge by Izzo and colleagues presents a 67-year-old woman receiving treatment for breast cancer who had decreased vision in her right eye; a fundus examination identified choroidal lesions with ill-defined borders and subretinal fluid. What would you do next?



JAMA Patient Page

1116 Testosterone Deficiency

NEWS & ANALYSIS

Medical News & Perspectives

1029 Using Telemedicine to Treat Opioid Use Disorder in Rural Areas

1032 Modest Calorie Reduction Can Improve Cardiometabolic Health

1033 The JAMA Forum

Nursing Our Way to Better Health

1035 Global Health

Multidrug-Resistant Malaria Expands its Reach

African Women's Preferences for HIV Prevention

Global Effect of Childhood Cancers

1036 News From the FDA

First Generics of Pregabalin

New Indications for Lyme Disease Tests

Textured Breast Implant Recall

Online @ jama.com



Editor's Audio Summary

Howard Bauchner, MD, summarizes and comments on this week's issue.

Author Audio Interview



Karina W. Davidson, PhD, MASC, author of "Screening for Social Determinants of Health: The Known and Unknown"

Author Video Interview

Beverly E. Sha, MD, author of "Adult Immunization Update"

Visual Abstract

"Effect of Sacubitril-Valsartan vs Enalapril on Aortic Stiffness in Patients With Heart Failure and Reduced Ejection Fraction: A Randomized Clinical Trial"

Departments

1027 Staff Listing

1100 CME Questions

1112 Classified Advertising

1114 Journal Advertiser Index

1115 Contact Information

Instructions for Authors

jama.com/public/instructionsforauthors.aspx