

**ISSUE @ A GLANCE**

 **Acute coronary syndromes: the impressive impact of guideline-based management in NSTEMI**  
*T.F. Lüscher* 3753

**CardioPulse**

**What's new in the Fourth Universal Definition of Myocardial infarction?**  
*K. Thygesen* 3757

**'Ten Commandments' for the 2018 ESC/EACTS Guidelines on Myocardial Revascularization**  
*F.-J. Neumann and M. Sousa-Uva* 3759

**Regenerating the heart**  
*M. Nicholls* 3760

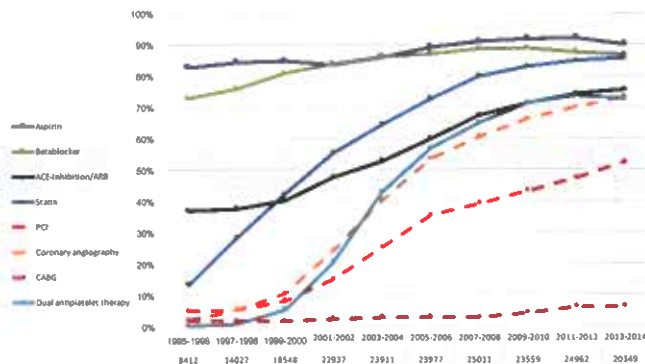
**Takotsubo: the myth of rapid and complete recovery**  
*D.K. Dawson* 3762

**Simon Ray MD**  
*J. Ozkan* 3763

**New EHF International Editorial Board Member** 3765

**FAST TRACK CLINICAL RESEARCH**

**Acute coronary syndromes**



**Relations between implementation of new treatments and improved outcomes in patients with non-ST-elevation myocardial infarction during the last 20 years: experiences from SWEDEHEART registry 1995 to 2014**

*K. Szummer, L. Wallentin, L. Lindhagen, J. Alfredsson, D. Erlinge, C. Held, S. James, T. Kellerth, B. Lindahl, A. Ravn-Fischer, E. Rydberg, T. Yndigegn, and T. Jernberg* 3766


**Editorial**  
**Improving care at the population and individual level: lessons from SWEDEHEART**  
*E.M. Antman* 3777

**CLINICAL RESEARCH**

**Acute coronary syndromes**

**Impact of age on the performance of the ESC 0/1h-algorithms for early diagnosis of myocardial infarction**  
*J. Boeddinghaus, T. Nestelberger, R. Twerenbold, J.T. Neumann, B. Lindahl, E. Giannitsis, N.A. Sørensen, P. Badertscher, J.E. Jann, D. Wussler, C. Puelacher, M. Rubini Giménez, K. Wildi, I. Strebel, J. Du Fay de Lavallaz, F. Selman, Z. Sabti, N. Kozhuharov, E. Potlukova, K. Rentsch, O. Miró, F.J. Martin-Sanchez, B. Morawiec, J. Parenica, J. Lohrmann, W. Kloos, A. Buser, N. Geigy, D.I. Keller, S. Osswald, T. Reichlin, D. Westermann, S. Blankenberg, and C. Mueller; for the APACE, BACC, and TRAPID-AMI Investigators* 3780

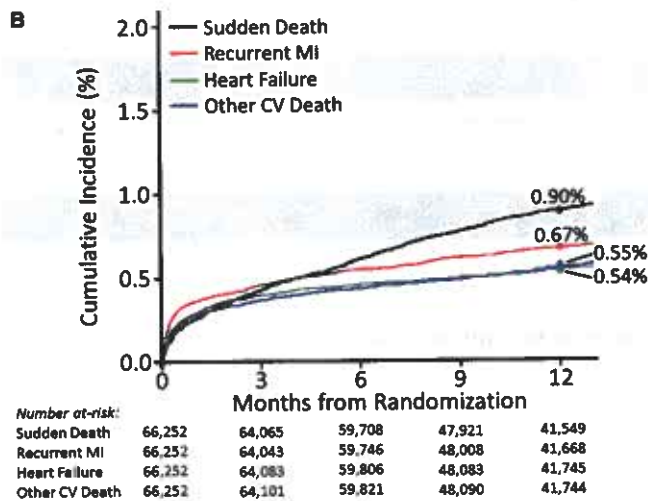
**Editorial**  
**Accuracy of 0/1-hour algorithm for diagnosis of MI in the elderly: mono-dimensional optimization of troponin cut-offs for individual confounders or precision medicine?**  
*M. Vafaie and H.A. Katus* 3795

 **Guideline-indicated treatments and diagnostics, GRACE risk score, and survival for non-ST elevation myocardial infarction**  
*M. Hall, O.J. Bebb, T.B. Dondo, A.T. Yan, S.G. Goodman, H. Bueno, D.P. Chew, D. Brieger, P.D. Batin, M.E. Farkouh, H. Hemingway, A. Timmis, K.A.A. Fox, and C.P. Gale* 3798

Editorial

Treatment-risk paradox in acute coronary syndromes  
M. Roffi and D. Mukherjee

3807



Modes and timing of death in 66 252 patients with non-ST-segment elevation acute coronary syndromes enrolled in 14 TIMI trials

D.D. Berg, S.D. Wiviott, E. Braunwald, J. Guo, K. Im, A. Kashani, C.M. Gibson, C.P. Cannon, D.A. Morrow, D.L. Bhatt, J.L. Mega, M.L. O'Donoghue, E.M. Antman, L.K. Newby, M.S. Sabatine, and R.P. Giugliano

3810



Editorial

Different perspectives on outcomes in patients with non-ST-elevation myocardial infarction when observed in clinical trials and in real life

L. Wallentin

3821

DISCUSSION FORUM

Type 2 myocardial infarction

T. Nestelberger, J. Boedinghaus, and C. Mueller

3825

Reconsidering aetiologies of type 2 myocardial infarction: when a classification is a simplistic approach for a complex reality

R.A. Montone, G. Niccoli, G.A. Lanza, and F. Crea

3826

CARDIOVASCULAR FLASHLIGHTS

Mechanical circulatory support as bridge to urgent structural intervention

P. Horn, M. Kelm, and R. Westenfeld

3776

Residual shunt diagnosed with 4D flow after reparation of post-infarct ventricular septal defect

A. Alvarez, A. Pastor, V. Ospina, and L. Molina

3820



Open Access Paper



For the podcast associated with this article, please visit <https://academic.oup.com/eurheartj/pages/Podcasts>



Visit EHJ's mobile site  
<https://academic.oup.com/eurheartj>



[www.eurheartj.org](http://www.eurheartj.org)