

## ISSUE @ A GLANCE

 **Special issues in heart failure: pulmonary hypertension, deranged potassium levels, and haemodynamic profiles**  
*T.F. Lüscher* 2857

## CardioPulse

**John McMurray MD FESC**  
*J. Ozkan* 2860

**Heartfailurematters.org**  
*K. Dickstein* 2861

**The Geoffrey Rose Lecture 2017**  
*M. Nicholls* 2863

**Andrew Hurst Henderson, 1930-2017**  
*A.G. Fraser and A.C. Newby* 2865

**Holger Thiele MD** 2867

**The ESC Textbook of Vascular Biology**  
*F. Paneni* 2868

## CURRENT OPINION

**Pulmonary hypertension in heart failure with preserved ejection fraction: a plea for proper phenotyping and further research**  
*M.M. Hoeper, C.S.P. Lam, J.-L. Vachiery, J. Bauersachs, C. Gerges, I.M. Lang, D. Bonderman, K.M. Olsson, J.S.R. Gibbs, P. Dorfmueller, M. Guazzi, N. Galie, A. Manes, M.L. Handoko, A. Vonk-Noordegraaf, M. Lankeit, S. Konstantinides, R. Wachter, C. Opitz, and S. Rosenkranz* 2869

## VIEWPOINT

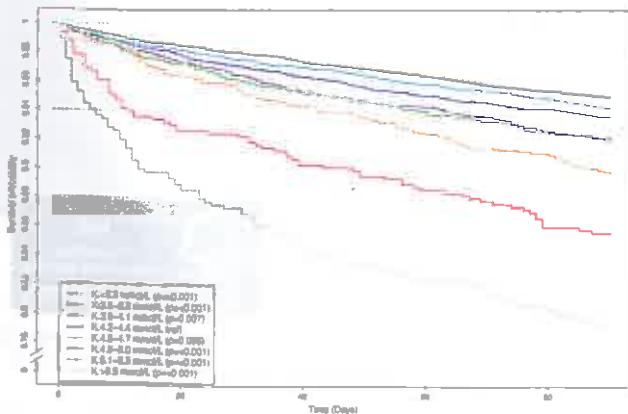
**Is it time to recognize a new phenotype? Heart failure with preserved ejection fraction with pulmonary vascular disease**  
*B.A. Borlaug and M. Obokata* 2874

## CLINICAL RESEARCH

**Heart failure/cardiomyopathy**  
**Unveiling transthyretin cardiac amyloidosis and its predictors among elderly patients with severe aortic stenosis undergoing transcatheter aortic valve replacement**  
*A. Castaño, D.L. Narotsky, N. Hamid, O.K. Khaliq, R. Morgenstern, A. DeLuca, J. Rubin, C. Chiuzan, T. Nazif, T. Vahl, I. George, S. Kodali, M.B. Leon, R. Hahn, S. Bokhari, and M.S. Maurer* 2879

### Editorial

**Dangerous relationships: aortic stenosis and transthyretin cardiac amyloidosis**  
*P. Gargiulo and P. Perrone-Filardi* 2888



**Associations of serum potassium levels with mortality in chronic heart failure patients**  
*M. Aldahl, A.-S.C. Jensen, L. Davidsen, M.A. Eriksen, S.M. Hansen, B.J. Nielsen, M.L. Krogager, L. Køber, C. Torp-Pedersen, and P. Søgaard* 2890

Editorial

Serum potassium in patients with chronic heart failure: once we make a U-turn where should we go?

B. Pitt and P. Rossignol

2897

		CONGESTION	
		-	+
POOR PERFUSSION	-	Dry/Warm 36%	Wet/Warm 42%
	+	Dry/Cold 6%	Wet/Cold 16%

Haemodynamic profiles of children with end-stage heart failure

S. Chen, J.C. Dykes, D.B. McElhinney, R.J. Gajarski, A.Y. Shin, S.A. Hollander, M.E. Everitt, J.F. Price, R.R. Thiagarajan, S.J. Kindel, J.W. Rossano, B.D. Kaufman, L.J. May, E. Pruitt, D.N. Rosenthal, and C.S. Almond

2900

Editorial

What can haemodynamic profiles teach us about heart failure in the paediatric population?

R.M. Blanton

2910

CARDIOVASCULAR FLASHLIGHTS

Uncommon cause of dyspnoea after percutaneous closure of the left atrial appendage

M. Orban, S. Brunner, S. Massberg, and A. Bauer

2912

MitraClip improves mitral valve geometry in complex organic mitral regurgitation: insights from three-dimensional echocardiography

P. Debonnaire, F. van der Kley, N. Ajmone Marsan, and V. Delgado

2913

For the podcast associated with this article, please visit <https://academic.oup.com/eurheartj/pages/Podcasts>



Visit EHJ's mobile site <https://academic.oup.com/eurheartj>



[www.eurheartj.org](http://www.eurheartj.org)