

ISSUE @ A GLANCE

 **Heart failure with preserved ejection fraction: unravelling an enigma**
T.F. Lüscher 2763

CardioPulse

The CABANA trial: A first glance at an important study
A. Tofield 2767

CABANA - the (not so) neutral study
V. Markides 2769

The CABANA Trial: an honourable view
M. Packer 2770

CABANA: after all, a positive trial
K.-H. Kuck 2771

CABANA Trial, another favourable view
C. Blomström-Lundqvist 2771

The Evolution of Bioresorbable Scaffolds
J. Ozkan 2772

British Society of Heart Failure
P. Chaggar, I. Squire, and P.R. Kalra 2773

The New Postgraduate Course in Heart Failure
R. Amstein 2775

Minutes between life and death
T. Meyer and K. Heinrich Scholz 2778

CLINICAL REVIEW

Novel therapeutic concepts
Heart failure with preserved ejection fraction: from mechanisms to therapies
C.S.P. Lam, A.A. Voors, R.A. de Boer, S.D. Solomon, and D.J. van Veldhuisen 2780

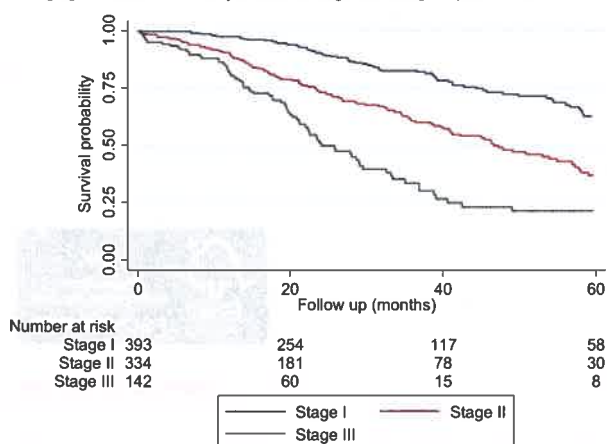
CURRENT OPINION

Heart failure/cardiomyopathy
Transitioning from usual care to biomarker-based personalized and precision medicine in heart failure: call for action
A. Bayes-Genis, A.A. Voors, F. Zannad, J.L. Januzzi, A. Mark Richards, and J. Díez 2793

FAST TRACK CLINICAL RESEARCH

Heart failure/cardiomyopathy

Staging of cardiac ATTR amyloidosis at diagnosis using NT-proBNP and eGFR



A new staging system for cardiac transthyretin amyloidosis

J.D. Gillmore, T. Damy, M. Fontana, M. Hutchinson, H.J. Lachmann, A. Martinez-Naharro, C.C. Quarta, T. Rezk, C.J. Whelan, E. Gonzalez-Lopez, T. Lane, J.A. Gilbertson, D. Rowczenio, A. Petrie, and P.N. Hawkins

2799

Editorial

'A new staging system for cardiac transthyretin amyloidosis': is it already on the verge of obsolescence?

A. Singh and R.H. Falk

2807

CLINICAL RESEARCH

Heart failure/cardiomyopathy

Haemodynamics, dyspnoea, and pulmonary reserve in heart failure with preserved ejection fraction

M. Obokata, T.P. Olson, Y.N.V. Reddy, V. Melenovsky, G.C. Kane, and B.A. Borlaug

2810

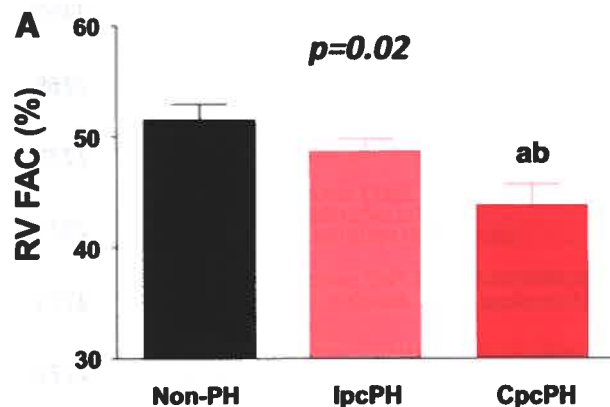
Editorial

Questioning the obvious: does dyspnoea really matter in heart failure?

M. Packer

2822

Pulmonary circulation



Exercise unmasks distinct pathophysiologic features in heart failure with preserved ejection fraction and pulmonary vascular disease

T.M. Gorter, M. Obokata, Y.N.V. Reddy, V. Melenovsky, and B.A. Borlaug

2825

Editorial

Helping to understand heart failure with preserved ejection fraction

V. van Empel and H.-P. Brunner-La Rocca

2836

CARDIOVASCULAR FLASHLIGHT

When baby 'pushed the button': an exceptional peripartum cardiomyopathy-like syndrome

G. Schurtz, M. Richardson, B. Longère, and N. Lamblin

2839



For the podcast associated with this article, please visit <https://academic.oup.com/eurheartj/pages/Podcasts>



Visit EHJ's mobile site

<https://academic.oup.com/eurheartj>



www.eurheartj.org