



EUROPEAN
SOCIETY OF
CARDIOLOGY®

European Heart Journal

Volume 37 No. 25 July 2016

ISSUE @ A GLANCE



Frontiers in lipid research: mechanisms, diet, and novel lipids
T.F. Lüscher

1935

CardioPulse

The physician of the future: looking 30 years ahead
M.R. Mehra

1938

European Heart Journal visits the German Society of Cardiology
T.F. Lüscher

1939

The 82nd meeting of the German Society of Cardiology in 2016
A.M. Zeiher

1940

Europe reaches out to Africa
K. Sliwa

1940

Transformative learning
J. Marco

1942

Coronary heart disease in edentulous patients almost doubles the mortality risk
O. Vedin

1942

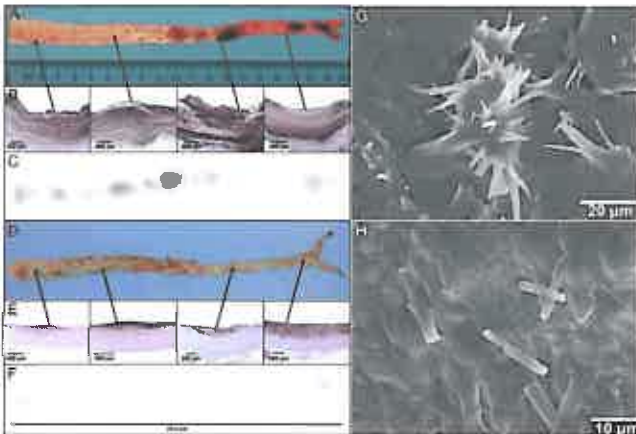
CURRENT OPINION



Fasting is not routinely required for determination of a lipid profile: clinical and laboratory implications including flagging at desirable concentration cut-points—a joint consensus statement from the European Atherosclerosis Society and European Federation of Clinical Chemistry and Laboratory Medicine
B.G. Nordestgaard, A. Langsted, S. Mora, G. Kolovou, H. Baum, E. Bruckert, G.F. Watts, G. Sypniewska, O. Wiklund, J. Borén, M.J. Chapman, C. Cobbaert, O.S. Descamps, A. von Eckardstein, P.R. Kamstrup, K. Pulkki, F. Kronenberg, A.T. Remaley, N. Rifai, E. Ros, and M. Langlois, for the European Atherosclerosis Society (EAS) and the European Federation of Clinical Chemistry and Laboratory Medicine (EFLM) joint consensus initiative

1944

REVIEW



Clinical update

Cholesterol crystal induced arterial inflammation and destabilization of atherosclerotic plaque
A. Janoudi, F.E. Shamoun, J.K. Kalavakunta, and G.S. Abela

1959

FASTTRACK CLINICAL RESEARCH

Coronary artery disease



Plasma ceramides predict cardiovascular death in patients with stable coronary artery disease and acute coronary syndromes beyond LDL-cholesterol
R. Laaksonen, K. Ekroos, M. Sysi-Aho, M. Hilvo, T. Vihervaara, D. Kauhanen, M. Suoniemi, R. Hurme, W. März, H. Scharnagl, T. Stojakovic, E. Vlachopoulou, M.-L. Lokki, M.S. Nieminen, R. Klingenberg, C.M. Matter, T. Hornemann, P. Jüni, N. Rodondi, L. Räber, S. Windecker, B. Gencer, E.R. Pedersen, G.S. Tell, O. Nygård, F. Mach, J. Sinisalo, and T.F. Lüscher

1967

CLINICAL RESEARCH

Prevention and epidemiology

Risk factor exposure in individuals free from cardiovascular disease differs according to age at first myocardial infarction

K. Gränsbo, P. Almgren, P.M. Nilsson, B. Hedblad, G. Engström, and O. Melander

1977

Editorial

Reduction of LDL-cholesterol: important at all ages

E. Braunwald

1982

Prevention and epidemiology

Greater decreases in cholesterol levels among individuals with high cardiovascular risk than among the general population: the northern Sweden MONICA study 1994 to 2014

M. Eriksson, A.-S. Forslund, J.-H. Jansson, S. Söderberg, M. Wennberg, and M. Eliasson

1985

Coronary artery disease

Dietary patterns and the risk of major adverse cardiovascular events in a global study of high-risk patients with stable coronary heart disease

R.A.H. Stewart, L. Wallentin, J. Benatar, N. Danchin, E. Hagström, C. Held, S. Husted, E. Lonn, A. Stebbins, K. Chiswell, O. Vedin, D. Watson, and H.D. White, on Behalf of the STABILITY Investigators

1993

CARDIOVASCULAR FLASHLIGHTS

Spontaneous resolution of iatrogenic ascending aorta dissection: now you see it, now you do not

J.B. Geske, A. Pochettino, and S. Maltais

1984

Chinese herbal drug natural indigo may cause pulmonary artery hypertension

M. Nishio, K. Hirooka, and Y. Doi

1992

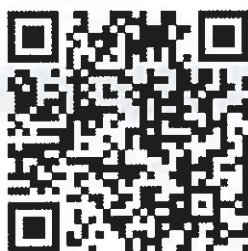
Preantibiotic era revisited: Janeway's lesions and Osler's nodes

S.P. Tripathi, D. Borgaonkar, and P.G. Kerkar

2002

 Open Access Paper

 For the podcast associated with this article, please visit <http://eurheartj.oxfordjournals.org/podcast>



Visit EHJ's mobile site
<http://m.eurheartj.oxfordjournals.org/>



www.eurheartj.org