



EUROPEAN
SOCIETY OF
CARDIOLOGY®

European Heart Journal

Volume 37 No. 24 June 2016

ISSUE @ A GLANCE



Frontiers of interventional cardiology: plaque imaging, thrombus load, and bifurcation lesions

T.F. Lüscher

1861

CardioPulse

The 2016 ESC European Guidelines for Cardiovascular Disease Prevention in Clinical Practice: The VI Joint Task Force

M.F. Piepoli and A.W. Hoes

1865

Book review

The PCR-EAPCI Percutaneous Interventional Cardiovascular Medicine textbook

P.P.T. de Jaegere

1867

What's new in coronary interventions? Changes in concept

J.-M. Ahn, S.-W. Lee and S.-J. Park

1868

EACPR country of the month initiative: France

M.-C. Iliou

1871

REVIEWS

Clinical update

Revascularization in stable coronary artery disease: a combined perspective from an interventional cardiologist and a cardiac surgeon

D.R. Holmes Jr and D.P. Taggart

1873

Imaging

Invasive coronary imaging: any role in primary and secondary prevention?

C. Di Mario and P.R. Moreno

1883

FASTTRACK CLINICAL RESEARCH

Interventional cardiology

Myocardial blush and microvascular reperfusion following manual thrombectomy during percutaneous coronary intervention for ST elevation myocardial infarction: insights from the TOTAL trial

V. Sharma, S.S. Jolly, T. Hamid, D. Sharma, J. Chiha, W. Chan, F. Fuchs, S. Bui, P. Gao, S. Kassam, R.C.M. Leung, D. Horák, H.O. Romppanen, M. El-Omar, S. Chowdhary, G. Stanković, S. Kedev, M.J. Rokoss, T. Sheth, V. Džavík, and C.B. Overgaard

1891

Editorial

Save your blushes and stop routine thrombus aspiration during primary PCI

P.J.L. Ong and W.C. Wijns

1899

CLINICAL RESEARCH

Interventional cardiology

The comparative efficacy of bivalirudin is markedly attenuated by use of radial access: insights from Blue Cross Blue Shield of Michigan Cardiovascular Consortium

E. Perdoncin, M. Seth, S. Dixon, L. Cannon, A. Khandelwal, A. Riba, S. David, D. Wohns, and H. Gurm

1902



Strategies to attenuate micro-vascular obstruction during P-PCI: the randomized reperfusion facilitated by local adjunctive therapy in ST-elevation myocardial infarction trial

S.A. Nazir, G.P. McCann, J.P. Greenwood, V. Kunadian, J.N. Khan, I.Z. Mahmoud, D.J. Blackman, M. Been, K.R. Abrams, L. Shipley, R. Wilcox, A.A.J. Adgey, and A.H. Gershlick

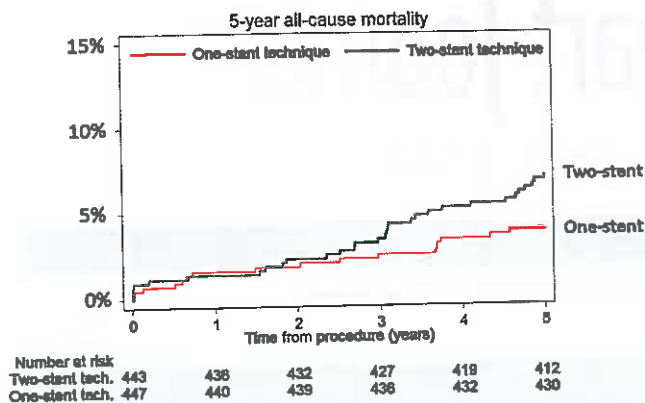
1910

Editorial

Finding an effective treatment for microvascular obstruction in STEMI: a road to perdition?

D.J. Kumbhani and J.A. de Lemos

1920



Interventional cardiology

Coronary bifurcation lesions treated with simple or complex stenting: 5-year survival from patient-level pooled analysis of the Nordic Bifurcation Study and the British Bifurcation Coronary Study

M.W. Behan, N.R. Holm, A.J. de Belder, J. Cockburn, A. Erglis, N.P. Curzen, M. Niemelä, K.G. Oldroyd, K. Kervinen, I. Kumsars, P. Gunnes, R.H. Stables, M. Maeng, J. Ravkilde, J.S. Jensen, E.H. Christiansen, N. Cooter, T.K. Steigen, S. Vikman, L. Thuesen, J.F. Lassen, and D. Hildick-Smith

1923

Editorial

Bifurcation lesions: no need to implant two stents when one is sufficient!

A. Colombo and R.J. Jabbour

1929

CARDIOVASCULAR FLASHLIGHTS



First-in-man assessment of plaque rupture by polarization-sensitive optical frequency domain imaging *in vivo*

J.N. van der Sijde, A. Karanasos, M. Villiger, B.E. Bouma, and E. Regar

1932

FDG-PET/CT images during 5 years before acute aortic dissection

N. Tahara, S. Hirakata, K. Okabe, A. Tahara, A. Honda, S. Igata, H. Kaida, T. Abe, H. Akashi, H. Tanaka, and Y. Fukumoto

1933

A rare cause of ischaemia in late adulthood: multimodal imaging of an anomalous origin of left coronary artery from the pulmonary artery

M.R. Summers, J.L. Gentry III, G. Pettersson, and W.A. Jaber

1934



Open Access Paper



For the podcast associated with this article, please visit <http://eurheartj.oxfordjournals.org/podcast>



Visit EHJ's mobile site
<http://m.eurheartj.oxfordjournals.org/>



www.eurheartj.org