


**ISSUE @ A GLANCE**

 **Revisiting angina pectoris with and without obstructive coronary artery disease**  
*T.F. Lüscher* 2119

**CardioPulse**

**CardioAthena Meeting 2018, Greece**  
*D. Tousoulis* 2123

**Milton Packer MD**  
*A. Tofield* 2126

**Milton Packer receives Jesse H. Neal award** 2127

**A Snapshot of Cardiology in Africa**  
*J. Ozkan* 2128

**CATHCHAT**  
*R. De Decker* 2129

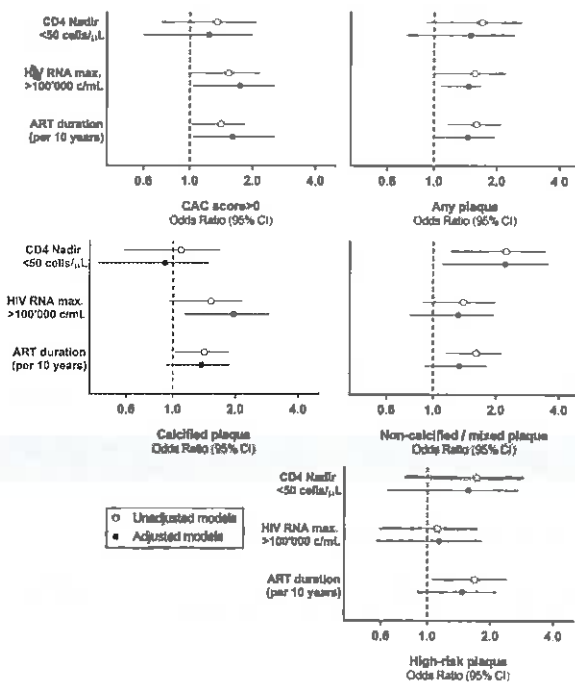
**Christiaan Barnard—The Surgeon Who Dared**  
*M.Y. Emmert* 2133

**META-ANALYSIS**

**Determinants of long-term clinical outcomes in patients with angina but without obstructive coronary artery disease: a systematic review and meta-analysis**  
*F. Radico, M. Zimarino, F. Fulgenzi, F. Ricci, M. Di Nicola, L. Jespersen, S.M. Chang, K.H. Humphries, M. Marzilli, and R. De Caterina* 2135

**CLINICAL RESEARCH**

**Coronary artery disease**



**Subclinical coronary artery disease in Swiss HIV-positive and HIV-negative persons**  
*P.E. Tarr, B. Ledergerber, A. Calmy, T. Doco-Lecompte, A. Marzel, R. Weber, P.A. Kaufmann, R. Nkoulou, R.R. Buechel, and H. Kovari; and the Swiss HIV Cohort Study* 2147

**Editorial**

**HIV and cardiovascular disease: much ado about nothing?**  
*G.S. Ma and B.R. Cotter* 2155

## BASIC SCIENCE

### Vascular biology

Defective cholesterol metabolism in haematopoietic stem cells promotes monocyte-driven atherosclerosis in rheumatoid arthritis

*D. Dragoljevic, M.J. Kraakman, P.R. Nagareddy, D. Ngo, W. Shihata, H.L. Kammoun, A. Whillas, M.K.S. Lee, A. Al-Sharea, G. Pernes, M.C. Flynn, G.I. Lancaster, M.A. Febbraio, J. Chin-Dusting, B.Y. Hanaoka, I.P. Wicks, and A.J. Murphy* 2158

### Editorial

Is defective cholesterol efflux an integral inflammatory component in myelopoiesis-driven cardiovascular diseases?

*L. Yvan-Charvet and F.K. Swirski* 2168

### Lipids

Rare *SCARB1* mutations associate with high-density lipoprotein cholesterol but not with coronary artery disease

*A. Helgadóttir, P. Sulem, G. Thorgeirsson, S. Gretarsdóttir, G. Thorleifsson, B.Ö. Jensson, G.A. Arnadóttir, I. Olafsson, G.I. Eyjolfsson, O. Sigurdardóttir, U. Thorsteinsdóttir, D.F. Gudbjartsson, H. Holm, and K. Stefansson* 2172

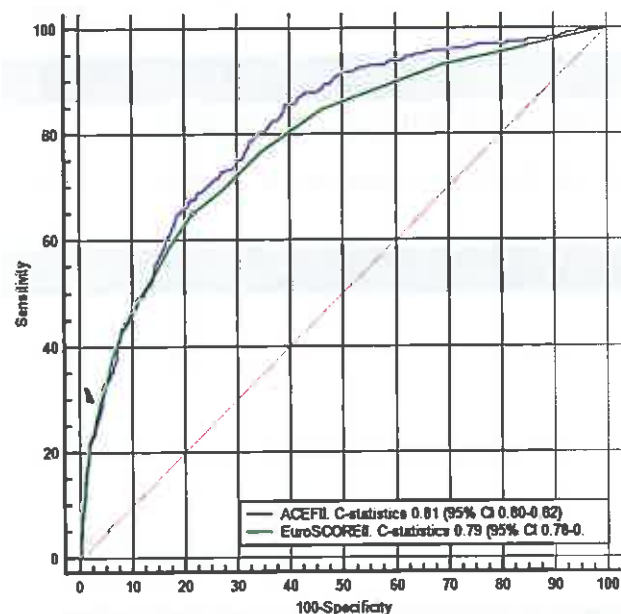
### Editorial

HDL-cholesterol, genetics, and coronary artery disease: the myth of the 'good cholesterol'?

*U. Landmesser and S. Hazen* 2179

## CLINICAL RESEARCH

### Cardiovascular surgery



The ACEF II Risk Score for cardiac surgery: updated but still parsimonious

*M. Ranucci, V. Pistuddi, S. Scolletta, C. de Vincentiis, and L. Menicanti* 2183

### Editorial

Predicting the future by looking at the past: necessary but not binding

*A. Afifi, H. Hosny, and M. Yacoub* 2190

## SPECIAL ARTICLE

### Interventional cardiology

Standardized End Point Definitions for Coronary Intervention Trials: The Academic Research Consortium-2 Consensus Document

*H.M. Garcia-Garcia, E.P. McFadden, A. Farb, R. Mehran, G.W. Stone, J. Spertus, Y. Onuma, M.-a. Morel, G.-A. van Es, B. Zuckerman, W.F. Fearon, D. Taggart, A.-P. Kappetein, M.W. Krucoff, P. Vranckx, S. Windecker, D. Cutlip, and P.W. Serruys, On behalf of the Academic Research Consortium* 2192

## META-ANALYSIS

- Autologous CD34<sup>+</sup> cell therapy improves exercise capacity, angina frequency and reduces mortality in no-option refractory angina: a patient-level pooled analysis of randomized double-blinded trials  
T.D. Henry, D.W. Losordo, J.H. Traverse, R.A. Schatz, E.M. Jolicoeur, G.L. Schaer, R. Clare, K. Chiswell, C.J. White, F.D. Fortuin, D.J. Kereiakes, A.M. Zeiher, W. Sherman, A.S. Hunt, and T.J. Povsic 2208

### Editorial

- Refractory angina revisited: stem cells for a growing unmet clinical need?  
T. Thum 2217

## CARDIOVASCULAR FLASHLIGHTS

- Arteritis of Takayasu in Western man of 31 years  
J. Werenitzky, A.J. Lepori, M.H. Clavero, Á. Carranza, F. Islas, and J.A. de Agustin 2216
- Cardiac paraganglioma  
Z. Hai and S. Guangrui 2219
- Kissing balloon technique to secure the neo-left ventricular outflow tract in transcatheter mitral valve implantation  
Z. Rahhab, B. Ren, P.P.T. de Jaegere, and N.M.D.A. Van Mieghem 2220

## ERRATUM

- Erratum to: Dr Mary Norine Walsh, President of ACC: As the new President of the American College of Cardiology (ACC), Dr Mary N. Walsh explains how she hopes her election will help advance new opportunities for women in the field 2171

## CORRIGENDA

- Corrigendum to: Monocyte and haematopoietic progenitor reprogramming as common mechanism underlying chronic inflammatory and cardiovascular diseases 2182
- Corrigendum to: Training the next generation of cardiovascular leaders in health policy and economics 2191

 Open Access Paper

 For the podcast associated with this article, please visit <https://academic.oup.com/eurheartj/pages/Podcasts>



Visit EHJ's mobile site  
<https://academic.oup.com/eurheartj>



[www.eurheartj.org](http://www.eurheartj.org)