

ISSUE @ A GLANCE

Frontiers in cardiac imaging: diagnostic and prognostic validity and safety
T.F. Lüscher 259

CardioPulse

Steven Nissen MD
M. Nicholls 262

Hand-held Echography devices: ready for prime time?
N.M. Cardim, V. Delgado, and B.A. Popescu 264

What is CMR doing for patients today?
Z. Khalique and D.J. Pennell 266

A new Research Centre in Russia
E. Shlyakhto 271

A new Paediatric Centre in Russia
E. Shlyakhto 273

CURRENT OPINION

Imaging

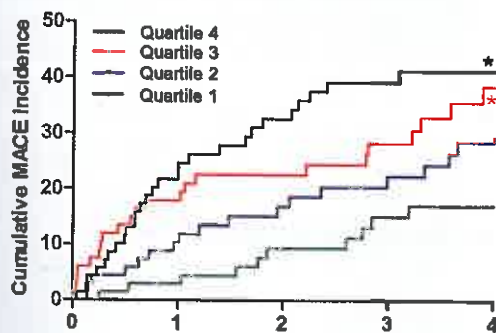
The Year in Cardiology 2017: Imaging
V. Delgado, J. Knuti, S. Plein, S. Achenbach, and J.J. Bax 275

Strategies for radiation dose reduction in nuclear cardiology and cardiac computed tomography imaging: a report from the European Association of Cardiovascular Imaging (EACVI), the Cardiovascular Committee of European Association of Nuclear Medicine (EANM), and the European Society of Cardiovascular Radiology (ESCR)

A. Gimelli, S. Achenbach, R.R. Buechel, T. Edvardson, M. Francone, O. Gaemperli, M. Hacker, F. Hyafil, P.A. Kaufmann, P. Lancellotti, K. Nieman, G. Pontone, F. Pugliese, H.J. Verberne, M. Gutberlet, J.J. Bax, and D. Neglia 286

FAST TRACK CLINICAL RESEARCH

Coronary artery disease



No. at risk	0	1	2	3	4
LCBI Q1 (<83.0)	68	66	52	43	29
LCBI Q2 (≥83.0-227.0)	68	61	47	40	31
LCBI Q3 (≥227.0-360.0)	67	55	42	35	22
LCBI Q4 (≥360.0)	70	53	41	30	25

* $p < 0.01$ as compared to first quartile (reference).

Near-infrared spectroscopy-derived lipid core burden index predicts adverse cardiovascular outcome in patients with coronary artery disease during long-term follow-up

A.-S. Schuurman, M. Vroegindewey, I. Kardys, R.M. Oemrawsingh, J.M. Cheng, S. de Boer, H.M. Garcia-Garcia, R.-J. van Geuns, E.S. Regar, J. Daemen, N.M. van Mieghem, P.W. Serruys, E. Boersma, and K.M. Akkerhuis 295

Editorial

An amber signal lights up before the red: do not dismiss it

C. Di Mario, A. Mattesini, and R. Waksman 303

CLINICAL RESEARCH

Imaging

The effect of 1.5 T cardiac magnetic resonance on human circulating leucocytes

W.R. Critchley, A. Reid, J. Morris, J.H. Naish, J.P. Stone, A.L. Ball, T. Major, D. Clark, N. Waldron, C. Fortune, J. Lagan, G.A. Lewis, M. Ainslie, E.B. Schelbert, D.M. Davis, M. Schmitt, J.E. Fildes, and C.A. Miller

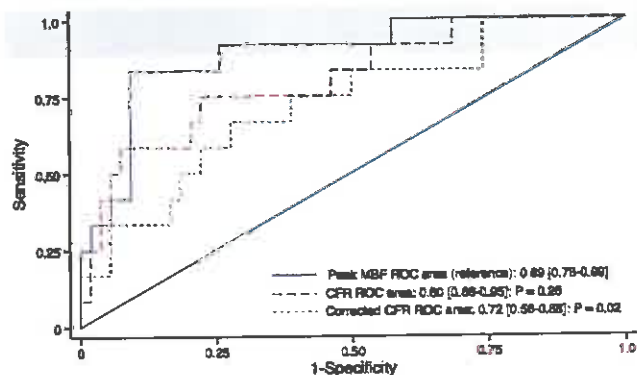
305

Editorial

Cardiac MR imaging genotoxicity?

M.A. Hill

313



Diagnostic and prognostic value of myocardial blood flow quantification as non-invasive indicator of cardiac allograft vasculopathy

P.E. Bravo, B.A. Bergmark, T. Vita, V.R. Taqueti, A. Gupta, S. Seidelmann, T.E. Christensen, M.T. Osborne, N.R. Shah, N. Ghosh, J. Hainer, C.F. Bibbo, M. Harrington, F. Costantino, M.R. Mehra, S. Dorbala, R. Blankstein, A. Desai, L. Stevenson, M.M. Givertz, and M.F. Di Carli

316

Editorial

The beginning at the end: non-invasive assessment of post-transplant coronary allograft vasculopathy at the microcirculatory level

O. Rimoldi and P.G. Camici

324

CARDIOVASCULAR FLASHLIGHTS

Aneurysmal left sinus of Valsalva in Marfan's syndrome

M.A. Chamsi-Pasha and G.M. Lawrie

285

Transapical implantation of a transcatheter aortic valve prosthesis into a mitral annuloplasty ring guided by real-time three-dimensional cardiac computed tomography-fluoroscopy fusion imaging

E. Schulz, A. Tamm, W. Kasper-König, A. Beiras-Fernandez, C.F. Vahl, T. Münzel, and R.S. von Bardeleben

327



Open Access Paper



For the podcast associated with this article, please visit <https://academic.oup.com/eurheartj/pages/Podcasts>



Visit EHJ's mobile site
<https://academic.oup.com/eurheartj>



www.eurheartj.org