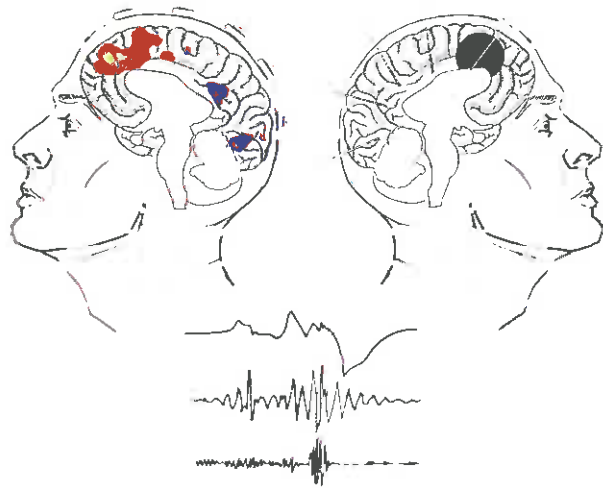


# BRAIN

A JOURNAL OF NEUROLOGY



**Cover image:** Non-invasive EEG-functional MRI (*left*) could potentially reveal the epileptogenic region demonstrated by invasive techniques, such as intracranially recorded high frequency oscillations (*right*). The red/yellow areas indicate maximum positive haemodynamic responses, the blue areas negative haemodynamic responses and green shows the area with high frequency oscillations. From González Otárula *et al.* Spike-related haemodynamic responses overlap with high frequency oscillations in patients with focal epilepsy. Pp. 731–743. Cover art by I+C studio.

## Contents

### Editorial

#### Editorial

D. M. Kullmann

621

### Scientific Commentaries

**Polymicrogyria and *GRIN1* mutations: altered connections, altered excitability**

P. B. Crino

622

**Parkinson's disease tremors and serotonin**

J. Jankovic

624

**Cognitive ageing and Alzheimer's disease: the cholinergic system redux**

D. L. Sultzer

626

### Review article

**Why not try harder? Computational approach to motivation deficits in neuro-psychiatric diseases**

M. Pessiglione, F. Vinckier, S. Bouret, J. Daunizeau and R. Le Bouc

629

### Report

**A homozygous *ATAD1* mutation impairs postsynaptic AMPA receptor trafficking and causes a lethal encephalopathy**

J. Piard, G. K. E. Umanah, F. L. Harms, L. Abalde-Atristain, D. Amram, M. Chang, R. Chen, M. Alawi, V. Salpietro, M. I. Rees, S.-K. Chung, H. Houlden, A. Verloes, T. M. Dawson, V. L. Dawson, L. Van Maldergem and K. Kutsche

651

## Original Articles

### **SC02 mutations cause early-onset axonal Charcot-Marie-Tooth disease associated with cellular copper deficiency**

A. P. Rebelo, D. Saade, C. V. Pereira, A. Farooq, T. C. Huff, L. Abreu, C. T. Moraes, D. Mnatsakanova, K. Mathews, H. Yang, E. A. Schon, S. Zuchner and M. E. Shy

662

### **HDAC6 is a therapeutic target in mutant GARS-induced Charcot-Marie-Tooth disease**

V. Benoy, L. Van Helleputte, R. Prior, C. d'Ydewalle, W. Haeck, N. Geens, W. Scheveneels, B. Schevenels, M. Z. Cader, K. Talbot, A. P. Kozlikowski, P. Vanden Berghe, P. Van Damme, W. Robberecht and L. Van Den Bosch

673

### **Hot-spot KIF5A mutations cause familial ALS**

D. Brenner, R. Yilmaz, K. Müller, T. Grehl, S. Petri, T. Meyer, J. Grosskreutz, P. Weydt, W. Ruf, C. Neuwirth, M. Weber, S. Pinto, K. G. Claeys, B. Schrank, B. Jordan, A. Knehr, K. Günther, A. Hübers, D. Zeller, The German ALS network MND-NET, C. Kubisch, S. Jablonka, M. Sendtner, T. Klopstock, M. de Carvalho, A. Sperfeld, G. Borck, A. E. Volk, J. Dorst, J. Weis, M. Otto, J. Schuster, K. Del Tredici, H. Braak, K. M. Danzer, A. Freischmidt, T. Meitinger, T. M. Strom, A. C. Ludolph, P. M. Andersen and J. H. Weishaupt

688

### **De novo mutations in GRIN1 cause extensive bilateral polymicrogyria**

A. E. Fry, K. A. Fawcett, N. Zelnik, H. Yuan, B. A. N. Thompson, L. Shemer-Meiri, T. D. Cushlon, H. Mugalaasi, D. Sims, N. Stoodley, S.-K. Chung, M. I. Rees, C. V. Patel, L. A. Brueton, V. Layet, F. Giuliano, M. P. Kerr, E. Banne, V. Meiner, T. Lerman-Sagie, K. L. Helbig, L. H. Kofman, K. M. Knight, W. Chen, V. Kannan, C. Hu, H. Kusumoto, J. Zhang, S. A. Swanger, G. H. Shaulsky, G. M. Mirzaa, A. M. Muir, H. C. Mefford, W. B. Dobyns, A. B. Mackenzie, J. G. L. Mullins, J. R. Lemke, N. Bahi-Buisson, S. F. Traynelis, H. F. Iago and D. T. Pilz

698

### **Stereotyped high-frequency oscillations discriminate seizure onset zones and critical functional cortex in focal epilepsy**

S. Liu, C. Gurses, Z. Sha, M. M. Quach, A. Sencer, N. Bebek, D. J. Curry, S. Prabhu, S. Tummala, T. R. Henry and N. F. Ince

713

### **Spike-related haemodynamic responses overlap with high frequency oscillations in patients with focal epilepsy**

K. A. González Otárrula, H. M. Khoo, N. von Ellenrieder, J. A. Hall, F. Dubeau and J. Gotman

731

### **A novel metabolism-based phenotypic drug discovery platform in zebrafish uncovers HDACs 1 and 3 as a potential combined anti-seizure drug target**

K. Ibhazehiebo, C. Gavrilovici, C. L. de la Hoz, S.-C. Ma, R. Rehak, G. Kaushik, P. L. Meza Santoscoy, L. Scott, N. Nath, D.-Y. Kim, J. M. Rho and D. M. Kurrasch

744

### **Characteristics and mechanism of apogeotropic central positional nystagmus**

J.-Y. Choi, S. Glasauer, J. H. Kim, D. S. Zee and J.-S. Kim

762

### **Migraine with visual aura associated with thicker visual cortex**

D. Gaist, A. Hougaard, E. Garde, N. L. Reislev, R. Wiwie, P. Iversen, C. G. Madsen, M. Blaabjerg, H. H. Nielsen, T. Krøigård, K. Østergaard, K. O. Kyvik, J. Hjelmberg, K. Madsen, H. R. Siebner and M. Ashina

776

### **Multiple sclerosis risk variants alter expression of co-stimulatory genes in B cells**

I. Smets, B. Fiddes, J. E. Garcia-Perez, D. He, K. Mallants, W. Liao, J. Dooley, G. Wang, S. Humblet-Baron, B. Dubois, A. Compston, J. Jones, A. Coles, A. Liston, M. Ban, A. Goris and S. Sawcer

786

### **Dopaminergic abnormalities following traumatic brain injury**

P. O. Jenkins, S. De Simoni, N. J. Bourke, J. Fleminger, G. Scott, D. J. Towey, W. Svensson, S. Khan, M. Patel, R. Greenwood, J. H. Cole and D. J. Sharp

797

### **Progression of tremor in early stages of Parkinson's disease: a clinical and neuroimaging study**

J. Pasquini, R. Ceravolo, Z. Qamhawi, J.-Y. Lee, G. Deuschl, D. J. Brooks, U. Bonuccelli and N. Pavese

811

### **Spatial patterns of progressive brain volume loss after moderate-severe traumatic brain injury**

J. H. Cole, A. Jolly, S. de Simoni, N. Bourke, M. C. Patel, G. Scott and D. J. Sharp

822

### **Evidence for a subcortical origin of mirror movements after stroke: a longitudinal study**

N. Ejaz, J. Xu, M. Branscheidt, B. Hertler, H. Schambra, M. Widmer, A. V. Faria, M. D. Harran, J. C. Cortes, N. Kim, P. A. Celnik, T. Kitago, A. R. Luft, J. W. Krakauer and J. Diedrichsen

837

### **Anatomy of aphasia revisited**

J. Fridriksson, D.-B. den Ouden, A. E. Hillis, G. Hickok, C. Rorden, A. Basilakos, G. Yourganov and L. Bonilha

848

### **A method for inferring regional origins of neurodegeneration**

J. Torok, P. D. Maia, F. Powell, S. Pandya and A. Raj for the Alzheimer's Disease Neuroimaging Initiative

863

### **Predicting progression from normal cognition to mild cognitive impairment for individuals at 5 years**

M. Albert, Y. Zhu, A. Moghekar, S. Mori, M. I. Miller, A. Soldan, C. Pettigrew, O. Selnes, S. Li and M.-C. Wang

877

### **Fibre-specific white matter reductions in Alzheimer's disease and mild cognitive impairment**

R. Mito, D. Raffelt, T. Dhillon, D. N. Vaughan, J.-D. Tournier, O. Salvado, A. Brodtmann, C. C. Rowe, V. L. Villemagne and A. Connelly

888

**Effect of cholinergic treatment depends on cholinergic integrity in early Alzheimer's disease**

N. Richter, N. Beckers, O. A. Onur, M. Dietlein, M. Tittgemeyer, L. Kracht, B. Neumaier, G. R. Fink and J. Kukolja

903

**MicroRNA132 associated multimodal neuroimaging patterns in unmedicated major depressive disorder**

S. Qi, X. Yang, L. Zhao, V. D. Calhoun, N. Perrone-Bizzozero, S. Liu, R. Jiang, T. Jiang, J. Sui and X. Ma

916

**Dorsal column**

**Grey Matter**

**Cerebral pneumography and the 20th century localization of brain tumours**

B. Lutters and P. J. Koehler

927

**Letters to the Editor**

**Unifying control over the body: consciousness and cross-cueing in split-brain patients**

L. J. Volz, S. A. Hillyard, M. B. Miller and M. S. Gazzaniga

e15

**No evidence for rare TRAP1 mutations influencing the risk of idiopathic Parkinson's disease**

J. J. Gaare, G. S. Nido, P. Sztromwasser, P. M. Knappskog, O. Dahl, M. Lund-Johansen, G. Alves, O.-B. Tysnes, S. Johansson, K. Haugarvoll and C. Tzoulis

e16

**Reply: No evidence for rare TRAP1 mutations influencing the risk of idiopathic Parkinson's disease**

J. C. Fitzgerald, A. Zimprich, D. Reddy Bobbili, M. Sharma, P. May and R. Krüger

e17

**High-dose spaced theta-burst TMS as a rapid-acting antidepressant in highly refractory depression**

N. R. Williams, K. D. Sudheimer, B. S. Bentzley, J. Pannu, K. H. Stimpson, D. Duvoio, K. Cherian, J. Hawkins, K. H. Scherrer, B. Vyssoki, D. DeSouza, K. S. Raj, J. Keller and A. F. Schatzberg

e18

**Reply: High-dose spaced theta-burst TMS as a rapid-acting antidepressant in highly refractory depression**

C.-T. Li and T.-P. Su

e19

**Evoked Response**

**'All disease begins in the gut': was Hippocrates right?**

L. Lyon

e20

**Erratum**

e21